

**DFFB Antibody (Center)**  
**Purified Rabbit Polyclonal Antibody (Pab)**  
**Catalog # AW5135**

**Specification**

---

**DFFB Antibody (Center) - Product Information**

Application	WB, IHC-P, FC,E
Primary Accession	<a href="#">O76075</a>
Reactivity	Human
Predicted	Mouse, Rat
Host	Rabbit
Clonality	polyclonal
Calculated MW	H=39,31;M=39;Rat=40 KDa
Isotype	Rabbit IgG
Antigen Source	HUMAN

**DFFB Antibody (Center) - Additional Information**

**Gene ID** 1677

**Antigen Region**  
203-238

**Other Names**

DNA fragmentation factor subunit beta, 3---, Caspase-activated deoxyribonuclease, CAD, Caspase-activated DNase, Caspase-activated nuclease, CPAN, DNA fragmentation factor 40 kDa subunit, DFF-40, DFFB, CAD, DFF2, DFF40

**Dilution**

WB~~1:1000  
IHC-P~~1:25  
FC~~1:25

**Target/Specificity**

This DFFB antibody is generated from a rabbit immunized with a KLH conjugated synthetic peptide between 203-238 amino acids from the Central region of human DFFB.

**Format**

Purified polyclonal antibody supplied in PBS with 0.09% (W/V) sodium azide. This antibody is purified through a protein A column, followed by peptide affinity purification.

**Storage**

Maintain refrigerated at 2-8°C for up to 2 weeks. For long term storage store at -20°C in small aliquots to prevent freeze-thaw cycles.

**Precautions**

DFFB Antibody (Center) is for research use only and not for use in diagnostic or therapeutic procedures.

## DFFB Antibody (Center) - Protein Information

**Name** DFFB

**Synonyms** CAD, DFF2, DFF40

### Function

Nuclease that induces DNA fragmentation and chromatin condensation during apoptosis. Degrades naked DNA and induces apoptotic morphology.

### Cellular Location

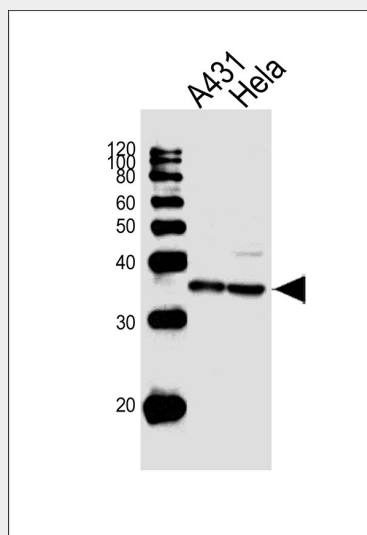
Cytoplasm. Nucleus.

## DFFB Antibody (Center) - Protocols

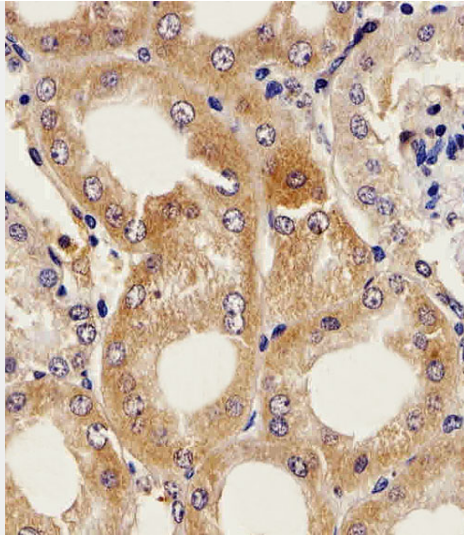
Provided below are standard protocols that you may find useful for product applications.

- [Western Blot](#)
- [Blocking Peptides](#)
- [Dot Blot](#)
- [Immunohistochemistry](#)
- [Immunofluorescence](#)
- [Immunoprecipitation](#)
- [Flow Cytometry](#)
- [Cell Culture](#)

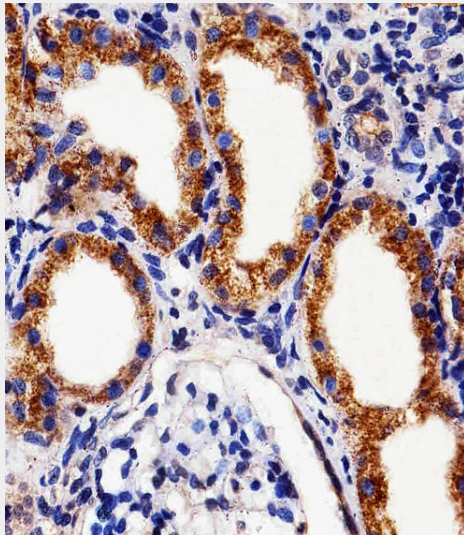
## DFFB Antibody (Center) - Images



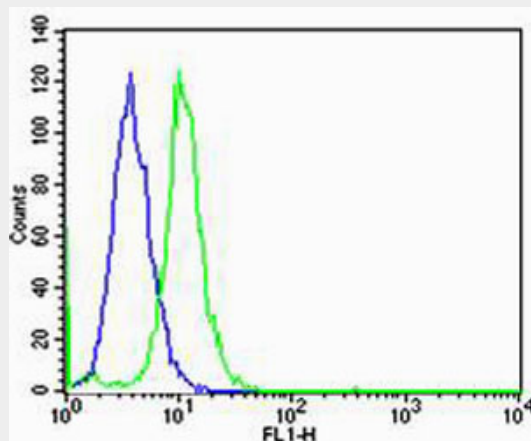
Western blot analysis of lysates from A431, HeLa cell line (from left to right), using DFFB Antibody (Center) (Cat. #AW5135). AW5135 was diluted at 1:1000 at each lane. A goat anti-rabbit IgG H&L (HRP) at 1:10000 dilution was used as the secondary antibody.



Immunohistochemical analysis of paraffin-embedded M.kidney section using DFFB Antibody (Center)(Cat#AW5135). AW5135 was diluted at 1:25 dilution. A peroxidase-conjugated goat anti-rabbit IgG at 1:400 dilution was used as the secondary antibody, followed by DAB staining.



Immunohistochemical analysis of paraffin-embedded H.kidney section using DFFB Antibody (Center)(Cat#AW5135). AW5135 was diluted at 1:25 dilution. A peroxidase-conjugated goat anti-rabbit IgG at 1:400 dilution was used as the secondary antibody, followed by DAB staining.



Flow cytometric analysis of Hela cells using DFFB Antibody (Center)(green, Cat#AW5135) compared to an isotype control of rabbit IgG(blue). AW5135 was diluted at 1:25 dilution. An Alexa Fluor® 488 goat anti-rabbit IgG at 1:400 dilution was used as the secondary antibody.

**DFFB Antibody (Center) - Background**

Nuclease that induces DNA fragmentation and chromatin condensation during apoptosis. Degrades naked DNA and induces apoptotic morphology.

**DFFB Antibody (Center) - References**

- Liu X.,et al.Proc. Natl. Acad. Sci. U.S.A. 95:8461-8466(1998).
- Mukae N.,et al.Proc. Natl. Acad. Sci. U.S.A. 95:9123-9128(1998).
- Halenbeck R.,et al.Curr. Biol. 8:537-540(1998).
- Nakagawara A.,et al.Submitted (JUN-1999) to the EMBL/GenBank/DDBJ databases.
- Ota T.,et al.Nat. Genet. 36:40-45(2004).