

ESD Antibody (Center)
Purified Rabbit Polyclonal Antibody (Pab)
Catalog # AW5122

Specification

ESD Antibody (Center) - Product Information

Application	WB,E
Primary Accession	P10768
Other Accession	O9GJT2
Reactivity	Human, Mouse
Predicted	Pig
Host	Rabbit
Clonality	Polyclonal
Calculated MW	H=31;M=31;Rat=31 KDa
Isotype	Rabbit IgG
Antigen Source	HUMAN

ESD Antibody (Center) - Additional Information

Gene ID 2098

Antigen Region
68-102

Other Names

S-formylglutathione hydrolase, FGH, Esterase D, Methylumbelliferyl-acetate deacetylase, ESD

Dilution

WB~~1:1000

Target/Specificity

This ESD antibody is generated from a rabbit immunized with a KLH conjugated synthetic peptide between 68-102 amino acids from the Central region of human ESD.

Format

Purified polyclonal antibody supplied in PBS with 0.09% (W/V) sodium azide. This antibody is purified through a protein A column, followed by peptide affinity purification.

Storage

Maintain refrigerated at 2-8°C for up to 2 weeks. For long term storage store at -20°C in small aliquots to prevent freeze-thaw cycles.

Precautions

ESD Antibody (Center) is for research use only and not for use in diagnostic or therapeutic procedures.

ESD Antibody (Center) - Protein Information

Name ESD

Function

Serine hydrolase involved in the detoxification of formaldehyde.

Cellular Location

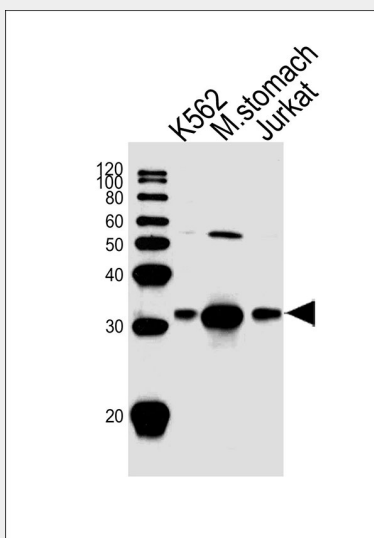
Cytoplasm. Cytoplasmic vesicle.

ESD Antibody (Center) - Protocols

Provided below are standard protocols that you may find useful for product applications.

- [Western Blot](#)
- [Blocking Peptides](#)
- [Dot Blot](#)
- [Immunohistochemistry](#)
- [Immunofluorescence](#)
- [Immunoprecipitation](#)
- [Flow Cytometry](#)
- [Cell Culture](#)

ESD Antibody (Center) - Images



Western blot analysis of lysates from K562 cell line, mouse stomach tissue, Jurkat cell line (from left to right), using ESD Antibody (Center) (Cat. #AW5122). AW5122 was diluted at 1:1000 at each lane. A goat anti-rabbit IgG H&L(HRP) at 1:10000 dilution was used as the secondary antibody.

ESD Antibody (Center) - Background

Serine hydrolase involved in the detoxification of formaldehyde.

ESD Antibody (Center) - References

- Lee E.Y.-H.P., et al. Proc. Natl. Acad. Sci. U.S.A. 83:6337-6341(1986).
Young L.-J.S., et al. Hum. Genet. 79:137-141(1988).
Hu R.-M., et al. Proc. Natl. Acad. Sci. U.S.A. 97:9543-9548(2000).
Kalnine N., et al. Submitted (MAY-2003) to the EMBL/GenBank/DDBJ databases.

Dunham A., et al. Nature 428:522-528(2004).