

R Ccdc89 Antibody (Center)
Affinity Purified Rabbit Polyclonal Antibody (Pab)
Catalog # AW5119

Specification

R Ccdc89 Antibody (Center) - Product Information

Application	WB,E
Primary Accession	B2RZ86
Reactivity	Human, Mouse, Rat
Host	Rabbit
Clonality	Polyclonal
Calculated MW	H=44,M=43,Rat=43 KDa
Isotype	Rabbit IgG
Antigen Source	Rat

R Ccdc89 Antibody (Center) - Additional Information

Gene ID 293107

Antigen Region
114-145

Other Names
Ccdc89;Coiled-coil domain-containing protein 89

Dilution
WB~~1:1000

Target/Specificity
This Rat Ccdc89 antibody is generated from rabbits immunized with a KLH conjugated synthetic peptide between 114-145 amino acids from the Central region of rat Ccdc89.

Format
Purified polyclonal antibody supplied in PBS with 0.09% (W/V) sodium azide. This antibody is purified through a protein A column, followed by peptide affinity purification.

Storage
Maintain refrigerated at 2-8°C for up to 2 weeks. For long term storage store at -20°C in small aliquots to prevent freeze-thaw cycles.

Precautions
R Ccdc89 Antibody (Center) is for research use only and not for use in diagnostic or therapeutic procedures.

R Ccdc89 Antibody (Center) - Protein Information

Name Ccdc89 {ECO:0000312|EMBL:AAI67063.1, ECO:0000312|RGD:1305335}

Cellular Location

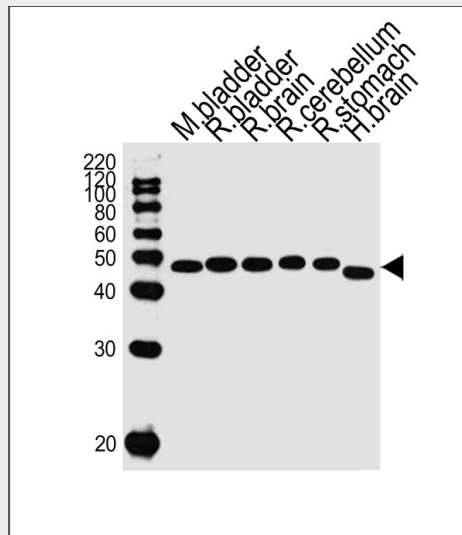
Cytoplasm {ECO:0000250|UniProtKB:Q7ZW57}. Nucleus {ECO:0000250|UniProtKB:Q7ZW57}.
Note=Uniformly distributed within the cell, but becomes recruited to the nucleus upon binding to HEY1 {ECO:0000250|UniProtKB:Q7ZW57}

R Ccdc89 Antibody (Center) - Protocols

Provided below are standard protocols that you may find useful for product applications.

- [Western Blot](#)
- [Blocking Peptides](#)
- [Dot Blot](#)
- [Immunohistochemistry](#)
- [Immunofluorescence](#)
- [Immunoprecipitation](#)
- [Flow Cytometry](#)
- [Cell Culture](#)

R Ccdc89 Antibody (Center) - Images



Western blot analysis of lysates from mouse bladder, rat bladder, rat brain, rat cerebellum, rat stomach, human brain tissue lysate (from left to right), using Ccdc89 Antibody (Center)(Cat. #AW5119). AW5119 was diluted at 1:1000 at each lane. A goat anti-rabbit IgG H&L(HRP) at 1:10000 dilution was used as the secondary antibody.

R Ccdc89 Antibody (Center) - Background

The function of this protein is unknown.

R Ccdc89 Antibody (Center) - References

Van Wayenbergh R., et al. Dev. Dyn. 228:716-725(2003).