

**RPLP0P6 Antibody (N-term)**  
**Affinity Purified Rabbit Polyclonal Antibody (Pab)**  
**Catalog # AW5116**

**Specification**

---

**RPLP0P6 Antibody (N-term) - Product Information**

Application	IF, WB, IHC-P,E
Primary Accession	<a href="#">Q8NHW5</a>
Other Accession	<a href="#">P19945</a> , <a href="#">Q29214</a> , <a href="#">P14869</a> , <a href="#">P05388</a> , <a href="#">Q9PV90</a> , <a href="#">P47826</a> , <a href="#">Q95140</a>
Reactivity	Human
Predicted	Bovine, Chicken, Zebrafish, Mouse, Pig, Rat
Host	Rabbit
Clonality	Polyclonal
Calculated MW	H=34 KDa
Isotype	Rabbit IgG
Antigen Source	Human

**RPLP0P6 Antibody (N-term) - Additional Information**

**Antigen Region**

1-30

**Other Names**

RPLP0P6;60S acidic ribosomal protein P0-like

**Dilution**

IF~~1:25

WB~~1:1000

IHC-P~~1:25

**Target/Specificity**

This RPLP0P6 antibody is generated from rabbits immunized with a KLH conjugated synthetic peptide between 1-30 amino acids from the N-terminal region of human RPLP0P6.

**Format**

Purified polyclonal antibody supplied in PBS with 0.09% (W/V) sodium azide. This antibody is purified through a protein A column, followed by peptide affinity purification.

**Storage**

Maintain refrigerated at 2-8°C for up to 2 weeks. For long term storage store at -20°C in small aliquots to prevent freeze-thaw cycles.

**Precautions**

RPLP0P6 Antibody (N-term) is for research use only and not for use in diagnostic or therapeutic procedures.

**RPLP0P6 Antibody (N-term) - Protein Information**

**Name** RPLP0P6

**Function**

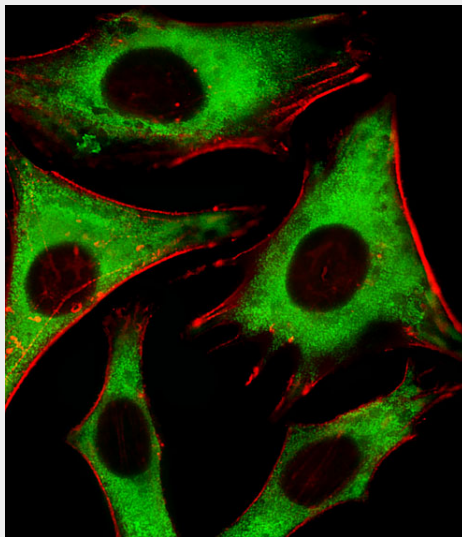
Ribosomal protein P0 is the functional equivalent of E.coli protein L10.

**RPLP0P6 Antibody (N-term) - Protocols**

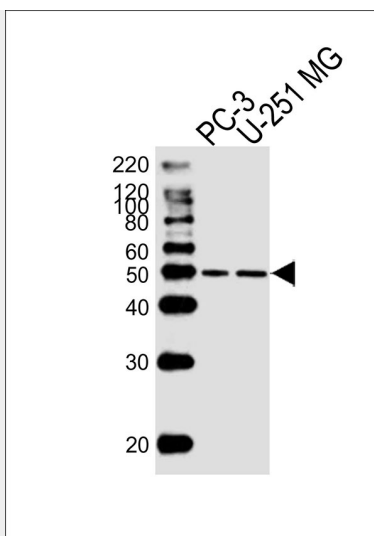
Provided below are standard protocols that you may find useful for product applications.

- [Western Blot](#)
- [Blocking Peptides](#)
- [Dot Blot](#)
- [Immunohistochemistry](#)
- [Immunofluorescence](#)
- [Immunoprecipitation](#)
- [Flow Cytometry](#)
- [Cell Culture](#)

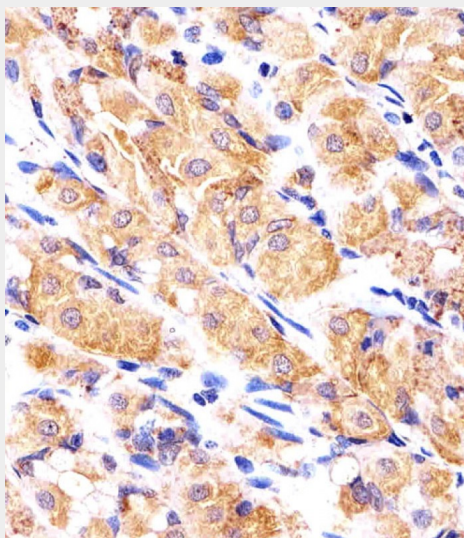
**RPLP0P6 Antibody (N-term) - Images**



Fluorescent image of HeLa cells stained with RPLP0P6 Antibody (N-term)(Cat#AW5116). AW5116 was diluted at 1:25 dilution. An Alexa Fluor 488-conjugated goat anti-rabbit IgG at 1:400 dilution was used as the secondary antibody (green). Cytoplasmic actin was counterstained with Alexa Fluor® 555 conjugated with Phalloidin (red).



Western blot analysis of lysates from PC-3,U-251 MG cell line (from left to right), using RPLP0P6Antibody(N-term)(Cat. #AW5116). AW5116 was diluted at 1:1000 at each lane. A goat anti-rabbit IgG H&L(HRP) at 1:10000 dilution was used as the secondary antibody.Lysates at 20ug per lane.



Immunohistochemical analysis of paraffin-embedded H. stomach section using RPLP0P6 Antibody (N-term)(Cat#AW5116). AW5116 was diluted at 1:25 dilution. A undiluted biotinylated goat polyvalent antibody was used as the secondary, followed by DAB staining.

### **RPLP0P6 Antibody (N-term) - Background**

Ribosomal protein P0 is the functional equivalent of E.coli protein L10 (By similarity).

### **RPLP0P6 Antibody (N-term) - References**

Gorry M.C., et al. Submitted (NOV-2001) to the EMBL/GenBank/DDBJ databases.  
Li W.B., et al. Submitted (JUL-2004) to the EMBL/GenBank/DDBJ databases.  
Mural R.J., et al. Submitted (SEP-2005) to the EMBL/GenBank/DDBJ databases.  
Gauci S., et al. Anal. Chem. 81:4493-4501(2009).