

**FAM50A Antibody (C-term)**  
**Affinity Purified Rabbit Polyclonal Antibody (Pab)**  
**Catalog # AW5115**

**Specification**

---

**FAM50A Antibody (C-term) - Product Information**

Application	IF, WB,E
Primary Accession	<a href="#">Q14320</a>
Other Accession	<a href="#">Q9WV03</a> , <a href="#">Q568K9</a> , <a href="#">Q4KLV7</a> , <a href="#">Q2VPH1</a>
Reactivity	Human
Predicted	Xenopus, Zebrafish, Mouse
Host	Rabbit
Clonality	Polyclonal
Calculated MW	H=40;M=40 KDa
Isotype	Rabbit IgG
Antigen Source	Human

**FAM50A Antibody (C-term) - Additional Information**

**Gene ID** 9130

**Antigen Region**  
311-339

**Other Names**

FAM50A;DXS9928E; HXC26; XAP5; Protein FAM50A; Protein FAM50A; Protein HXC-26; Protein FAM50A; Protein XAP-5

**Dilution**

IF~~1:25  
WB~~1:1000

**Target/Specificity**

This FAM50A antibody is generated from rabbits immunized with a KLH conjugated synthetic peptide between 311-339 amino acids from the C-terminal region of human FAM50A.

**Format**

Purified polyclonal antibody supplied in PBS with 0.09% (W/V) sodium azide. This antibody is purified through a protein A column, followed by peptide affinity purification.

**Storage**

Maintain refrigerated at 2-8°C for up to 2 weeks. For long term storage store at -20°C in small aliquots to prevent freeze-thaw cycles.

**Precautions**

FAM50A Antibody (C-term) is for research use only and not for use in diagnostic or therapeutic procedures.

**FAM50A Antibody (C-term) - Protein Information**

**Name** FAM50A

**Synonyms** DXS9928E, HXC26, XAP5

**Function**

Probably involved in the regulation of pre-mRNA splicing.

**Cellular Location**

Nucleus.

**Tissue Location**

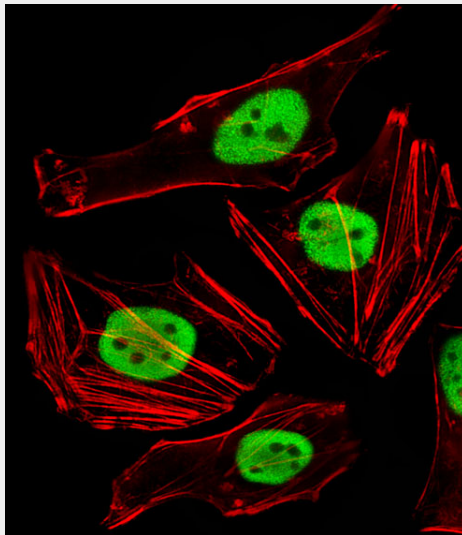
Widely expressed in fetal and adult tissues. Mostly abundant in fetal brain, liver and kidney; in the adult, high levels were also observed in heart, skeletal muscle, spleen, thymus, prostate and small intestine. Expressed in fetal cerebellum and hypothalamus Low expression is observed in fetal temporal lobe (PubMed:32703943)

**FAM50A Antibody (C-term) - Protocols**

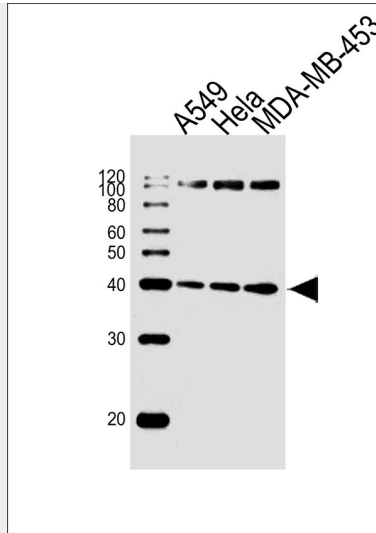
Provided below are standard protocols that you may find useful for product applications.

- [Western Blot](#)
- [Blocking Peptides](#)
- [Dot Blot](#)
- [Immunohistochemistry](#)
- [Immunofluorescence](#)
- [Immunoprecipitation](#)
- [Flow Cytometry](#)
- [Cell Culture](#)

**FAM50A Antibody (C-term) - Images**



Fluorescent image of HeLa cells stained with FAM50A Antibody (C-term)(Cat#AW5115). AW5115 was diluted at 1:25 dilution. An Alexa Fluor 488-conjugated goat anti-rabbit IgG at 1:400 dilution was used as the secondary antibody (green). Cytoplasmic actin was counterstained with Alexa Fluor® 555 conjugated with Phalloidin (red).



Western blot analysis of lysates from A549, HeLa, MDA-MB-453 cell line (from left to right), using FAM50A Antibody (C-term) (Cat. #AW5115). AW5115 was diluted at 1:1000 at each lane. A goat anti-rabbit IgG H&L (HRP) at 1:10000 dilution was used as the secondary antibody. Lysates at 20ug per lane.

#### **FAM50A Antibody (C-term) - Background**

May be a DNA-binding protein or transcriptional factor.

#### **FAM50A Antibody (C-term) - References**

- Mazzarella R., et al. *Genomics* 45:216-219(1997).
- Ota T., et al. *Nat. Genet.* 36:40-45(2004).
- Ross M.T., et al. *Nature* 434:325-337(2005).
- Mural R.J., et al. Submitted (SEP-2005) to the EMBL/GenBank/DDBJ databases.
- Toyoda A., et al. *DNA Res.* 3:337-340(1996).