

LIMK2 Antibody (C-term)
Affinity Purified Rabbit Polyclonal Antibody (Pab)
Catalog # AW5105

Specification

LIMK2 Antibody (C-term) - Product Information

Application	WB, IHC-P,E
Primary Accession	P53671
Other Accession	Q32L23
Reactivity	Human
Predicted	Bovine
Host	Rabbit
Clonality	Polyclonal
Calculated MW	H=72 KDa
Isotype	Rabbit IgG
Antigen Source	Human

LIMK2 Antibody (C-term) - Additional Information

Gene ID 3985

Antigen Region
570-599

Other Names
LIMK2;LIM domain kinase 2

Dilution
WB~~1:1000
IHC-P~~1:25

Target/Specificity

This LIMK2 antibody is generated from rabbits immunized with a KLH conjugated synthetic peptide between 570-599 amino acids from the C-terminal region of human LIMK2.

Format

Purified polyclonal antibody supplied in PBS with 0.09% (W/V) sodium azide. This antibody is purified through a protein A column, followed by peptide affinity purification.

Storage

Maintain refrigerated at 2-8°C for up to 2 weeks. For long term storage store at -20°C in small aliquots to prevent freeze-thaw cycles.

Precautions

LIMK2 Antibody (C-term) is for research use only and not for use in diagnostic or therapeutic procedures.

LIMK2 Antibody (C-term) - Protein Information

Name LIMK2

Function

Serine/threonine-protein kinase that plays an essential role in the regulation of actin filament dynamics (PubMed:10436159, PubMed:11018042). Acts downstream of several Rho family GTPase signal transduction pathways (PubMed:10436159, PubMed:11018042). Involved in astral microtubule organization and mitotic spindle orientation during early stages of mitosis by mediating phosphorylation of TPPP (PubMed:22328514). Displays serine/threonine-specific phosphorylation of myelin basic protein and histone (MBP) in vitro (PubMed:8537403). Suppresses ciliogenesis via multiple pathways; phosphorylation of CFL1, suppression of directional trafficking of ciliary vesicles to the ciliary base, and by facilitating YAP1 nuclear localization where it acts as a transcriptional corepressor of the TEAD4 target genes AURKA and PLK1 (PubMed:25849865).

Cellular Location

Cytoplasm, cytoskeleton, spindle. Cytoplasm, cytoskeleton, microtubule organizing center, centrosome [Isoform LIMK2b]: Cytoplasm. Cytoplasm, perinuclear region. Nucleus Note=Mainly present in the cytoplasm and is scarcely translocated to the nucleus.

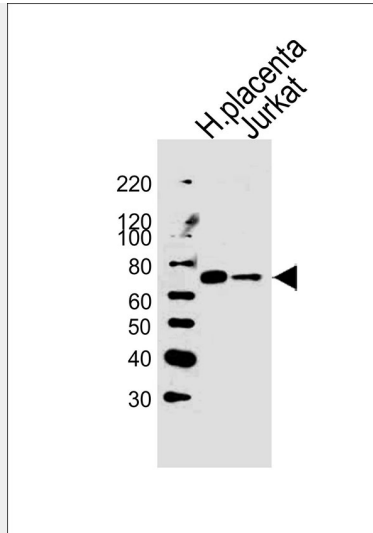
LIMK2 Antibody (C-term) - Protocols

Provided below are standard protocols that you may find useful for product applications.

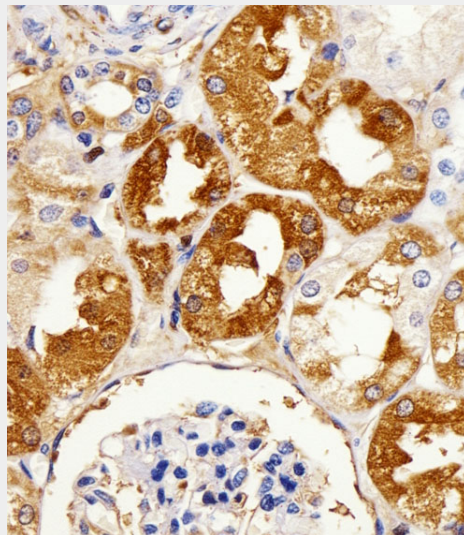
- [Western Blot](#)
- [Blocking Peptides](#)
- [Dot Blot](#)
- [Immunohistochemistry](#)
- [Immunofluorescence](#)
- [Immunoprecipitation](#)
- [Flow Cytometry](#)
- [Cell Culture](#)

LIMK2 Antibody (C-term) - Images





Western blot analysis of lysates from human placenta tissue and Jurkat cell line (from left to right), using LIMK2 Antibody (C-term)(Cat. #AW5105). AW5105 was diluted at 1:1000 at each lane. A goat anti-rabbit IgG H&L(HRP) at 1:10000 dilution was used as the secondary antibody.



Immunohistochemical analysis of paraffin-embedded H.kidney section using LIMK2 Antibody (C-term)(Cat#AW5105). AW5105 was diluted at 1:25 dilution. A peroxidase-conjugated goat anti-rabbit IgG at 1:400 dilution was used as the secondary antibody, followed by DAB staining.

LIMK2 Antibody (C-term) - Background

Displays serine/threonine-specific phosphorylation of myelin basic protein and histone (MBP) in vitro.