

TCEAL1 Antibody (N-term)
Affinity Purified Rabbit Polyclonal Antibody (Pab)
Catalog # AW5099

Specification

TCEAL1 Antibody (N-term) - Product Information

Application	WB,E
Primary Accession	Q15170
Other Accession	NP_001006641.1 , NP_001006640.1
Reactivity	Human
Host	Rabbit
Clonality	Polyclonal
Calculated MW	H=18 KDa
Isotype	Rabbit IgG
Antigen Source	HUMAN

TCEAL1 Antibody (N-term) - Additional Information

Gene ID 9338

Antigen Region
1-30

Other Names

TCEAL1; SIIR; Transcription elongation factor A protein-like 1; Nuclear phosphoprotein p21/SIIR; Transcription elongation factor S-II protein-like 1

Dilution

WB~~1:1000

Target/Specificity

This TCEAL1 antibody is generated from rabbits immunized with a KLH conjugated synthetic peptide between 1-30 amino acids from the N-terminal region of human TCEAL1.

Format

Purified polyclonal antibody supplied in PBS with 0.09% (W/V) sodium azide. This antibody is purified through a protein A column, followed by peptide affinity purification.

Storage

Maintain refrigerated at 2-8°C for up to 2 weeks. For long term storage store at -20°C in small aliquots to prevent freeze-thaw cycles.

Precautions

TCEAL1 Antibody (N-term) is for research use only and not for use in diagnostic or therapeutic procedures.

TCEAL1 Antibody (N-term) - Protein Information

Name TCEAL1 ([HGNC:11616](#))

Synonyms SIIR

Function

May be involved in transcriptional regulation. Modulates various viral and cellular promoters in a promoter context-dependent manner. For example, transcription from the FOS promoter is increased, while Rous sarcoma virus (RSV) long terminal repeat (LTR) promoter activity is repressed. Does not bind DNA directly.

Cellular Location

Nucleus.

Tissue Location

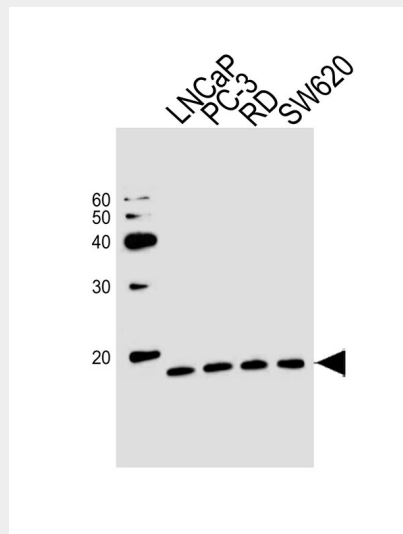
Expressed in all tissues examined. Highly expressed in heart, ovary, prostate and skeletal muscle. Moderately expressed in brain, placenta, testis and small intestine. Weakly expressed in lung, liver and spleen. Expressed in several cancer cell lines

TCEAL1 Antibody (N-term) - Protocols

Provided below are standard protocols that you may find useful for product applications.

- [Western Blot](#)
- [Blocking Peptides](#)
- [Dot Blot](#)
- [Immunohistochemistry](#)
- [Immunofluorescence](#)
- [Immunoprecipitation](#)
- [Flow Cytometry](#)
- [Cell Culture](#)

TCEAL1 Antibody (N-term) - Images



Western blot analysis of lysates from LNCaP, PC-3, RD, SW620 cell line (from left to right), using TCEAL1 Antibody (N-term)(Cat. #AW5099). AW5099 was diluted at 1:1000 at each lane. A goat anti-rabbit IgG H&L(HRP) at 1:10000 dilution was used as the secondary antibody. Lysates at 20ug per lane.

TCEAL1 Antibody (N-term) - Background

This gene encodes a member of the transcription elongation factor A (SII)-like (TCEAL) gene family. Members of this family may function as nuclear phosphoproteins that modulate transcription in a promoter context-dependent manner. The encoded protein is similar to transcription elongation factor A/transcription factor SII and contains a zinc finger-like motif as well as a sequence related to the transcription factor SII Pol II-binding region. It may exert its effects via protein-protein interactions with other transcriptional regulators rather than via direct binding of DNA. Multiple family members are located on the X chromosome. Alternative splicing results in multiple transcript variants encoding a single isoform.

TCEAL1 Antibody (N-term) - References

Chung, C.J., et al. *Toxicol. Appl. Pharmacol.* 232(2):203-209(2008)
Olsen, J.V., et al. *Cell* 127(3):635-648(2006)
Lee, Y.L., et al. *J. Lab. Clin. Med.* 147(5):228-233(2006)
Santos, A.M., et al. *Eur. J. Cancer* 42(7):958-963(2006)
Santos, A.M., et al. *Biochem. Biophys. Res. Commun.* 340(1):256-262(2006)