

**AHSG Antibody (C-term)**  
**Affinity Purified Rabbit Polyclonal Antibody (Pab)**  
**Catalog # AW5083**

**Specification**

---

**AHSG Antibody (C-term) - Product Information**

Application	WB,E
Primary Accession	<a href="#">P02765</a>
Other Accession	<a href="#">NP_001613.2</a>
Reactivity	Human
Host	Rabbit
Clonality	Polyclonal
Calculated MW	H=39 KDa
Isotype	Rabbit IgG
Antigen Source	HUMAN

**AHSG Antibody (C-term) - Additional Information**

**Gene ID** 197

**Antigen Region**  
247-276

**Other Names**

AHSG; FETUA; Alpha-2-HS-glycoprotein; Alpha-2-Z-globulin; Ba-alpha-2-glycoprotein; Fetuin-A; Alpha-2-HS-glycoprotein chain A; Alpha-2-HS-glycoprotein chain B

**Dilution**

WB~~1:1000

**Target/Specificity**

This AHSG antibody is generated from rabbits immunized with a KLH conjugated synthetic peptide between 247-276 amino acids from the C-terminal region of human AHSG.

**Format**

Purified polyclonal antibody supplied in PBS with 0.09% (W/V) sodium azide. This antibody is purified through a protein A column, followed by peptide affinity purification.

**Storage**

Maintain refrigerated at 2-8°C for up to 2 weeks. For long term storage store at -20°C in small aliquots to prevent freeze-thaw cycles.

**Precautions**

AHSG Antibody (C-term) is for research use only and not for use in diagnostic or therapeutic procedures.

**AHSG Antibody (C-term) - Protein Information**

**Name** AHSG

**Synonyms** FETUA

**Function**

Promotes endocytosis, possesses opsonic properties and influences the mineral phase of bone. Shows affinity for calcium and barium ions.

**Cellular Location**

Secreted.

**Tissue Location**

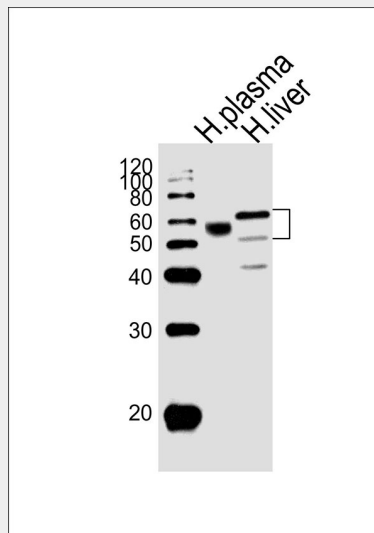
Synthesized in liver and selectively concentrated in bone matrix. Secreted in plasma. It is also found in dentin in much higher quantities than other plasma proteins

**AHSG Antibody (C-term) - Protocols**

Provided below are standard protocols that you may find useful for product applications.

- [Western Blot](#)
- [Blocking Peptides](#)
- [Dot Blot](#)
- [Immunohistochemistry](#)
- [Immunofluorescence](#)
- [Immunoprecipitation](#)
- [Flow Cytometry](#)
- [Cell Culture](#)

**AHSG Antibody (C-term) - Images**



Western blot analysis of lysates from human plasma and liver tissue lysate (from left to right), using AHSG Antibody (C-term)(Cat. #AW5083). AW5083 was diluted at 1:1000 at each lane. A goat anti-rabbit IgG H&L(HRP) at 1:10000 dilution was used as the secondary antibody.

**AHSG Antibody (C-term) - Background**

Alpha2-HS glycoprotein (AHSG), a glycoprotein present in the serum, is synthesized by

hepatocytes. The AHSB molecule consists of two polypeptide chains, which are both cleaved from a proprotein encoded from a single mRNA. It is involved in several functions, such as endocytosis, brain development and the formation of bone tissue. The protein is commonly present in the cortical plate of the immature cerebral cortex and bone marrow hemopoietic matrix, and it has therefore been postulated that it participates in the development of the tissues. However, its exact significance is still obscure.

#### **AHSB Antibody (C-term) - References**

Bailey, S.D., et al. Diabetes Care 33(10):2250-2253(2010) Verduijn, M., et al. Nephrol. Dial. Transplant. (2010) In press : Wang, Y., et al. Zhonghua Yi Xue Yi Chuan Xue Za Zhi 27(3):310-315(2010) Voigt, M., et al. Histopathology 56(6):775-788(2010) Kusnierz-Cabala, B., et al. Clin. Lab. 56 (5-6), 191-195 (2010) :

#### **AHSB Antibody (C-term) - Citations**

- [Facilitatory effects of fetuin-A on atherosclerosis.](#)