

PAH Antibody (Center)
Purified Mouse Monoclonal Antibody (Mab)
Catalog # AW5074

Specification

PAH Antibody (Center) - Product Information

Application	WB, IHC-P,E
Primary Accession	P00439
Other Accession	P04176 , P16331 , Q2KIH7
Reactivity	Human, Mouse, Rat
Predicted	Bovine
Host	Mouse
Clonality	Monoclonal
Calculated MW	H=52;M=52;Rat=52 KDa
Isotype	IgG1, κ
Antigen Source	HUMAN

PAH Antibody (Center) - Additional Information

Gene ID 5053

Antigen Region
127-161

Other Names
Phenylalanine-4-hydroxylase, PAH, Phe-4-monooxygenase, PAH

Dilution
WB~~1:1000
IHC-P~~1:25

Target/Specificity
This PAH antibody is generated from a mouse immunized with a KLH conjugated synthetic peptide between 127-161 amino acids from the Central region of human PAH.

Format
Purified monoclonal antibody supplied in PBS with 0.09% (W/V) sodium azide. This antibody is purified through a protein G column, followed by dialysis against PBS.

Storage
Maintain refrigerated at 2-8°C for up to 2 weeks. For long term storage store at -20°C in small aliquots to prevent freeze-thaw cycles.

Precautions
PAH Antibody (Center) is for research use only and not for use in diagnostic or therapeutic procedures.

PAH Antibody (Center) - Protein Information

Name PAH

Function

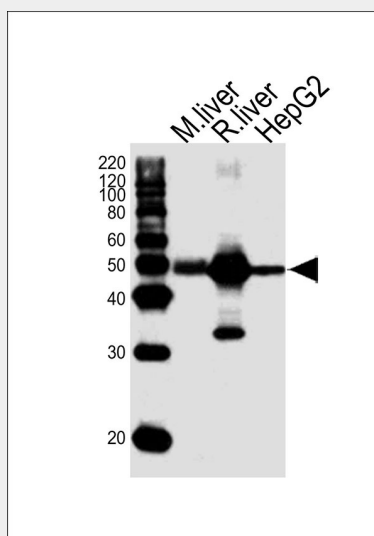
Catalyzes the hydroxylation of L-phenylalanine to L-tyrosine.

PAH Antibody (Center) - Protocols

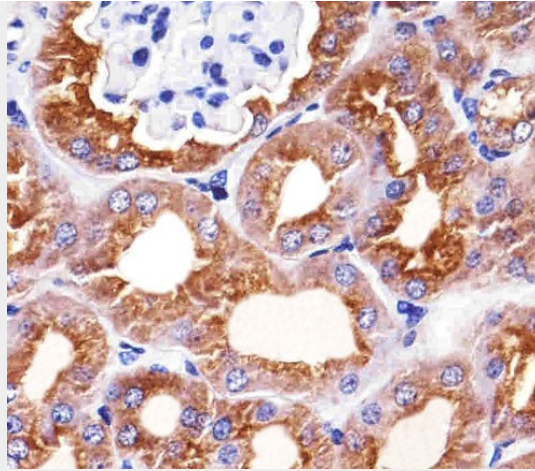
Provided below are standard protocols that you may find useful for product applications.

- [Western Blot](#)
- [Blocking Peptides](#)
- [Dot Blot](#)
- [Immunohistochemistry](#)
- [Immunofluorescence](#)
- [Immunoprecipitation](#)
- [Flow Cytometry](#)
- [Cell Culture](#)

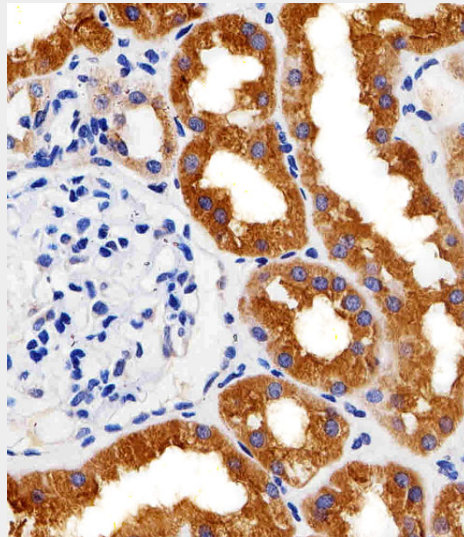
PAH Antibody (Center) - Images



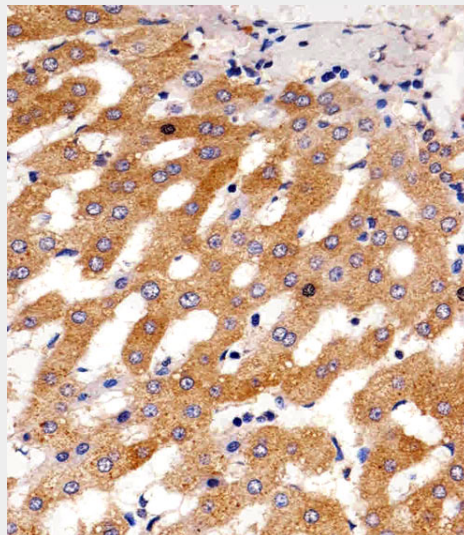
Western blot analysis of lysates from mouse liver, rat liver tissue, HepG2 cell line (from left to right), using PAH Antibody (Center) (Cat. #AW5074). AW5074 was diluted at 1:1000 at each lane. A goat anti-mouse IgG H&L(HRP) at 1:10000 dilution was used as the secondary antibody. Lysates at 20ug per lane.



Immunohistochemical analysis of paraffin-embedded M. kidney section using PAH Antibody (Center)(Cat#AW5074). AW5074 was diluted at 1:25 dilution. A peroxidase-conjugated goat anti-mouse IgG at 1:400 dilution was used as the secondary antibody, followed by DAB staining.



Immunohistochemical analysis of paraffin-embedded H. kidney section using PAH Antibody (Center)(Cat#AW5074). AW5074 was diluted at 1:25 dilution. A peroxidase-conjugated goat anti-mouse IgG at 1:400 dilution was used as the secondary antibody, followed by DAB staining.



Immunohistochemical analysis of paraffin-embedded H. liver section using PAH Antibody (Center)(Cat#AW5074). AW5074 was diluted at 1:25 dilution. A peroxidase-conjugated goat anti-mouse IgG at 1:400 dilution was used as the secondary antibody, followed by DAB staining.

PAH Antibody (Center) - References

- Kwok S.C.M., et al. *Biochemistry* 24:556-561(1985).
Scriver C.R., et al. Submitted (SEP-1997) to the EMBL/GenBank/DDBJ databases.
Cotton R.G., et al. *Biochem. J.* 255:193-196(1988).
Miranda F.F., et al. *J. Biol. Chem.* 277:40937-40943(2002).
Siltberg-Liberles J., et al. *Gene* 427:86-92(2008).