

RPS6KB2 Antibody
Mouse Monoclonal Antibody (Mab)
Catalog # AW5054

Specification

RPS6KB2 Antibody - Product Information

Application	WB,E
Primary Accession	O9UBS0
Other Accession	NP_003943.2
Reactivity	Human, Mouse
Host	Mouse
Clonality	Monoclonal
Calculated MW	H=53,17;M=53 KDa
Isotype	IgG1,K
Antigen Source	HUMAN

RPS6KB2 Antibody - Additional Information

Gene ID 6199

Antigen Region
1-470

Other Names

RPS6KB2; STK14B; Ribosomal protein S6 kinase beta-2; 70 kDa ribosomal protein S6 kinase 2; S6 kinase-related kinase; Serine/threonine-protein kinase 14B; p70 ribosomal S6 kinase beta

Dilution

WB~~ 1:1000

Target/Specificity

This RPS6KB2 monoclonal antibody is generated from mouse immunized with RPS6KB2 recombinant protein.

Format

Purified monoclonal antibody supplied in PBS with 0.09% (W/V) sodium azide. This antibody is purified through a protein G column, followed by dialysis against PBS.

Storage

Maintain refrigerated at 2-8°C for up to 2 weeks. For long term storage store at -20°C in small aliquots to prevent freeze-thaw cycles.

Precautions

RPS6KB2 Antibody is for research use only and not for use in diagnostic or therapeutic procedures.

RPS6KB2 Antibody - Protein Information

Name RPS6KB2

Synonyms STK14B

Function

Phosphorylates specifically ribosomal protein S6 (PubMed:29750193). Seems to act downstream of mTOR signaling in response to growth factors and nutrients to promote cell proliferation, cell growth and cell cycle progression in an alternative pathway regulated by MEAK7 (PubMed:29750193).

Cellular Location

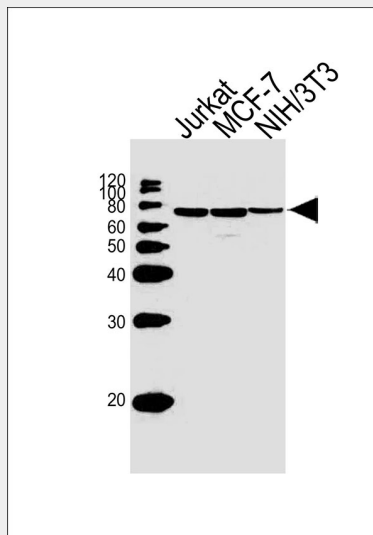
Cytoplasm. Nucleus.

RPS6KB2 Antibody - Protocols

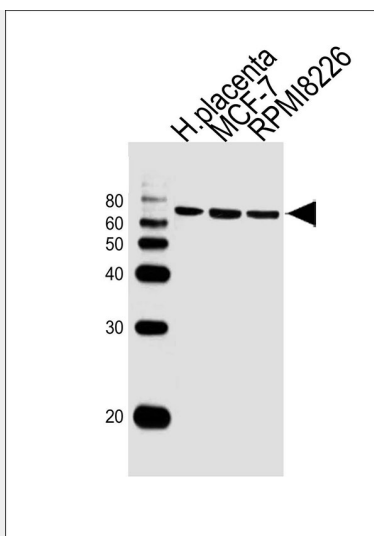
Provided below are standard protocols that you may find useful for product applications.

- [Western Blot](#)
- [Blocking Peptides](#)
- [Dot Blot](#)
- [Immunohistochemistry](#)
- [Immunofluorescence](#)
- [Immunoprecipitation](#)
- [Flow Cytometry](#)
- [Cell Culture](#)

RPS6KB2 Antibody - Images



Western blot analysis of lysates from Jurkat, MCF-7, NIH/3T3 cell line (from left to right), using RPS6KB2 Antibody (Cat. #AW5054). AW5054 was diluted at 1:1000 at each lane. A goat anti-mouse IgG H&L (HRP) at 1:10000 dilution was used as the secondary antibody. Lysates at 20ug per lane.



Western blot analysis of lysates from human placenta tissue lysate, MCF-7, RPMI8226 cell line (from left to right), using RPS6KB2 Antibody (AW5054). AW5054 was diluted at 1:1000 at each lane. A goat anti-mouse IgG H&L (HRP) at 1:10000 dilution was used as the secondary antibody.

RPS6KB2 Antibody - Background

Phosphorylates specifically ribosomal protein S6.