

**MMAB Antibody (Center)**  
**Purified Rabbit Polyclonal Antibody (Pab)**  
**Catalog # AW5050**

**Specification**

---

**MMAB Antibody (Center) - Product Information**

Application	WB,E
Primary Accession	<a href="#">O96EY8</a>
Other Accession	<a href="#">O9D273</a>
Reactivity	Human
Predicted	Mouse
Host	Rabbit
Clonality	Polyclonal
Calculated MW	H=27;M=26,28 KDa
Isotype	Rabbit IgG
Antigen Source	HUMAN

**MMAB Antibody (Center) - Additional Information**

**Gene ID** 326625

**Antigen Region**  
50-81

**Other Names**

Cob(I)yrinic acid a, c-diamide adenosyltransferase, mitochondrial, Cob(I)alamin adenosyltransferase, Methylmalonic aciduria type B protein, MMAB

**Dilution**

WB~~1:1000

**Target/Specificity**

This MMAB antibody is generated from a rabbit immunized with a KLH conjugated synthetic peptide between 50-81 amino acids from the Central region of human MMAB.

**Format**

Purified polyclonal antibody supplied in PBS with 0.09% (W/V) sodium azide. This antibody is purified through a protein A column, followed by peptide affinity purification.

**Storage**

Maintain refrigerated at 2-8°C for up to 2 weeks. For long term storage store at -20°C in small aliquots to prevent freeze-thaw cycles.

**Precautions**

MMAB Antibody (Center) is for research use only and not for use in diagnostic or therapeutic procedures.

**MMAB Antibody (Center) - Protein Information**

**Name** MMAB ([HGNC:19331](#))

### Function

Converts cob(I)alamin to adenosylcobalamin (adenosylcob(III)alamin), a coenzyme for methylmalonyl-CoA mutase, therefore participates in the final step of the vitamin B12 conversion (PubMed:<a href="http://www.uniprot.org/citations/12514191" target="\_blank">12514191</a>). Generates adenosylcobalamin (AdoCbl) and directly delivers the cofactor to MUT in a transfer that is stimulated by ATP- binding to MMAB and gated by MMAA (Probable).

### Cellular Location

Mitochondrion.

### Tissue Location

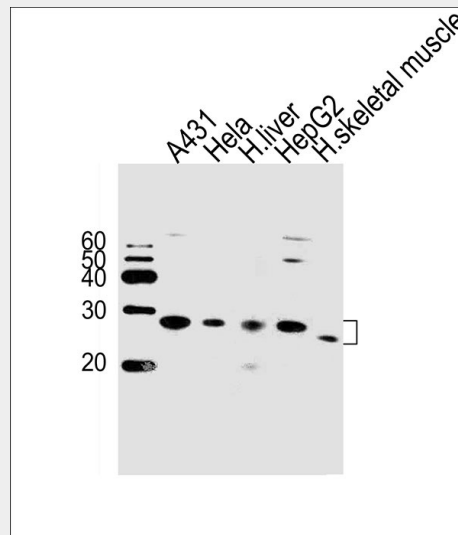
Expressed in liver and skeletal muscle.

## MMAB Antibody (Center) - Protocols

Provided below are standard protocols that you may find useful for product applications.

- [Western Blot](#)
- [Blocking Peptides](#)
- [Dot Blot](#)
- [Immunohistochemistry](#)
- [Immunofluorescence](#)
- [Immunoprecipitation](#)
- [Flow Cytometry](#)
- [Cell Culture](#)

## MMAB Antibody (Center) - Images



Western blot analysis of lysates from A431, HeLa cell line, human liver tissue, HepG2 cell line and human skeletal muscle tissue lysate (from left to right), using MMAB Antibody (Center) (Cat. #AW5050). AW5050 was diluted at 1:1000 at each lane. A goat anti-rabbit IgG H&L(HRP) at 1:10000 dilution was used as the secondary antibody.

## MMAB Antibody (Center) - References

Dobson C.M.,et al.Hum. Mol. Genet. 11:3361-3369(2002).  
Leal N.A.,et al.J. Biol. Chem. 278:9227-9234(2003).  
Burkard T.R.,et al.BMC Syst. Biol. 5:17-17(2011).  
Schubert H.L.,et al.Biochemistry 45:15188-15196(2006).  
Martinez M.A.,et al.Mol. Genet. Metab. 84:317-325(2005).