

**VILIP1 Antibody (C-term)**  
**Purified Rabbit Polyclonal Antibody (Pab)**  
**Catalog # AW5013**

**Specification**

---

**VILIP1 Antibody (C-term) - Product Information**

Application	WB,E
Primary Accession	<a href="#">P62760</a>
Reactivity	Human, Mouse, Rat
Host	Rabbit
Clonality	Polyclonal
Calculated MW	H=22;M=22;Rat=22 KDa
Isotype	Rabbit IgG
Antigen Source	HUMAN

**VILIP1 Antibody (C-term) - Additional Information**

**Gene ID** 7447

**Antigen Region**  
123-150

**Other Names**  
VSNL1; VISL1; Visinin-like protein 1; Hippocalcin-like protein 3

**Dilution**  
WB~~1:1000

**Target/Specificity**  
This VILIP1 antibody is generated from rabbits immunized with a KLH conjugated synthetic peptide between 123-150 amino acids from the C-terminal region of human VILIP1.

**Format**  
Purified polyclonal antibody supplied in PBS with 0.09% (W/V) sodium azide. This antibody is purified through a protein A column, followed by peptide affinity purification.

**Storage**  
Maintain refrigerated at 2-8°C for up to 2 weeks. For long term storage store at -20°C in small aliquots to prevent freeze-thaw cycles.

**Precautions**  
VILIP1 Antibody (C-term) is for research use only and not for use in diagnostic or therapeutic procedures.

**VILIP1 Antibody (C-term) - Protein Information**

**Name** VSNL1

## Synonyms VISL1

### Function

Regulates (in vitro) the inhibition of rhodopsin phosphorylation in a calcium-dependent manner.

### Tissue Location

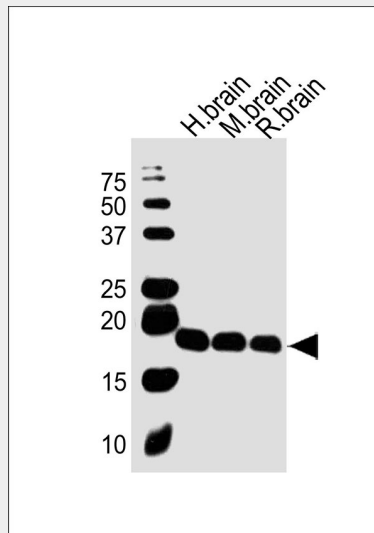
Brain and retina. Neuron-specific in the central and peripheral nervous system. Increased in the cerebrospinal fluid of Alzheimer disease patients (at protein level)

## VILIP1 Antibody (C-term) - Protocols

Provided below are standard protocols that you may find useful for product applications.

- [Western Blot](#)
- [Blocking Peptides](#)
- [Dot Blot](#)
- [Immunohistochemistry](#)
- [Immunofluorescence](#)
- [Immunoprecipitation](#)
- [Flow Cytometry](#)
- [Cell Culture](#)

## VILIP1 Antibody (C-term) - Images



All lanes : Anti-STRADA Antibody (C-term) at 1:1000 dilution Lane 1: human brain lysates Lane 2: mouse brain lysates Lane 3: rat brain lysates Lysates/proteins at 20 µg per lane. Secondary Goat Anti-Rabbit IgG, (H+L), Peroxidase conjugated at 1/10000 dilution Predicted band size : 48 kDa Blocking/Dilution buffer: 5% NFDM/TBST.

## VILIP1 Antibody (C-term) - Background

The visinin and visinin-like peptides represent a family of calcium-binding proteins that are highly expressed in the retina. Visinin has been shown to be a cone cell-specific protein with a molecular weight of 24 kDa. Several members of the visinin family of genes have been isolated and characterized from different species. These peptides are believed to be involved in the processes of phototransduction. The recoverin gene (RCV1) is believed to be involved in the pathophysiology of retinopathy in cancer patients.

**VILIP1 Antibody (C-term) - References**

Braunewell, K.H., et al., *Neuropharmacology* 44(6):707-715 (2003). Lin, L., et al., *J. Biol. Chem.* 277(44):41872-41878 (2002). Spilker, C., et al., *J. Neurosci.* 22(17):7331-7339 (2002). Bernstein, H.G., et al., *Neuroreport* 13(4):393-396 (2002). Lin, L., et al., *Biochem. Biophys. Res. Commun.* 296(4):827-832 (2002).