

**ECHDC3 Antibody (N-term)**  
**Purified Rabbit Polyclonal Antibody (Pab)**  
**Catalog # AW5004**

**Specification**

---

**ECHDC3 Antibody (N-term) - Product Information**

Application	<b>WB, IHC-P,E</b>
Primary Accession	<a href="#">O96DC8</a>
Reactivity	<b>Human</b>
Host	<b>Rabbit</b>
Clonality	<b>polyclonal</b>
Calculated MW	<b>H=33 KDa</b>
Isotype	<b>Rabbit IgG</b>
Antigen Source	<b>HUMAN</b>

**ECHDC3 Antibody (N-term) - Additional Information**

**Gene ID** 79746

**Antigen Region**  
31-66

**Other Names**  
Enoyl-CoA hydratase domain-containing protein 3, mitochondrial, ECHDC3

**Dilution**  
WB~~1:1000  
IHC-P~~1:25

**Target/Specificity**  
This ECHDC3 antibody is generated from a rabbit immunized with a KLH conjugated synthetic peptide between 31-66 amino acids from the N-terminal region of human ECHDC3.

**Format**  
Purified polyclonal antibody supplied in PBS with 0.09% (W/V) sodium azide. This antibody is purified through a protein A column, followed by peptide affinity purification.

**Storage**  
Maintain refrigerated at 2-8°C for up to 2 weeks. For long term storage store at -20°C in small aliquots to prevent freeze-thaw cycles.

**Precautions**  
ECHDC3 Antibody (N-term) is for research use only and not for use in diagnostic or therapeutic procedures.

**ECHDC3 Antibody (N-term) - Protein Information**

**Name** ECHDC3 ([HGNC:23489](#))

### Function

May play a role in fatty acid biosynthesis and insulin sensitivity.

### Cellular Location

Mitochondrion.

### Tissue Location

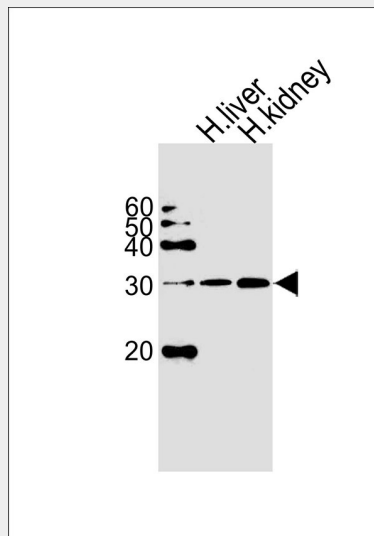
Expressed in adipocytes (PubMed:31010960). Expressed in blood cells, with higher expression in patients with low coronary lesions (PubMed:27586541).

## ECHDC3 Antibody (N-term) - Protocols

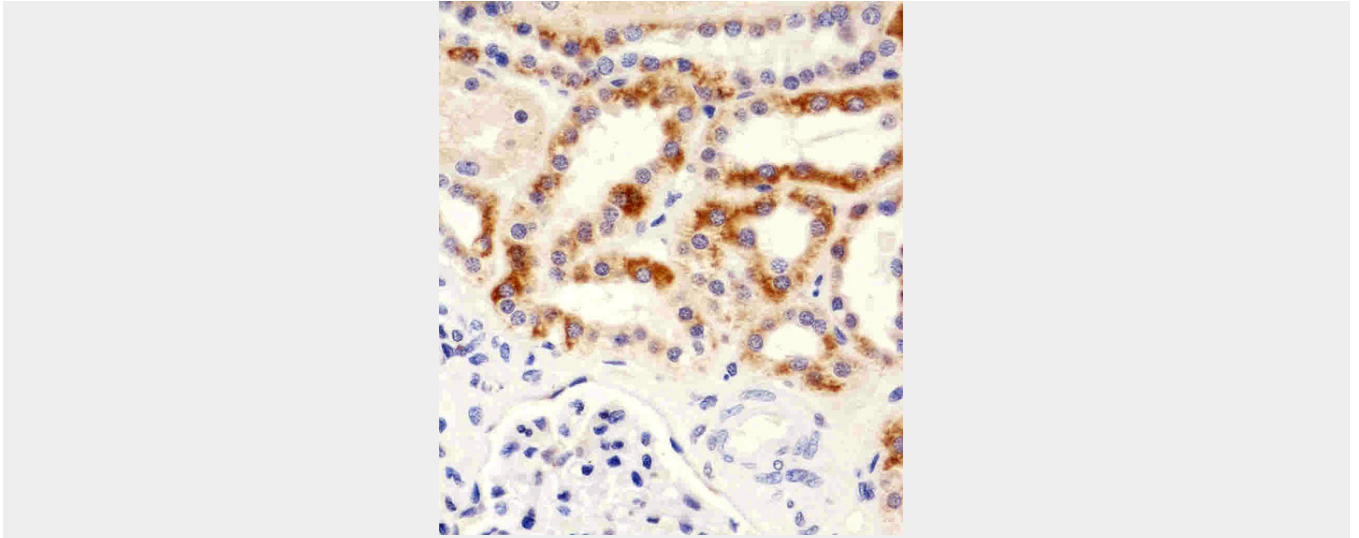
Provided below are standard protocols that you may find useful for product applications.

- [Western Blot](#)
- [Blocking Peptides](#)
- [Dot Blot](#)
- [Immunohistochemistry](#)
- [Immunofluorescence](#)
- [Immunoprecipitation](#)
- [Flow Cytometry](#)
- [Cell Culture](#)

## ECHDC3 Antibody (N-term) - Images



Western blot analysis of lysates from human liver and kidney tissue lysate (from left to right), using ECHDC3 Antibody (N-term)(Cat. #AW5004). AW5004 was diluted at 1:1000 at each lane. A goat anti-rabbit IgG H&L(HRP) at 1:5000 dilution was used as the secondary antibody.



Immunohistochemical analysis of paraffin-embedded H. kidney section using ECHDC3 Antibody (N-term)(Cat#AW5004). AW5004 was diluted at 1:25 dilution. A peroxidase-conjugated goat anti-rabbit IgG at 1:400 dilution was used as the secondary antibody, followed by DAB staining.

#### **ECHDC3 Antibody (N-term) - References**

- Ota T.,et al.Nat. Genet. 36:40-45(2004).
- Wan D.,et al.Proc. Natl. Acad. Sci. U.S.A. 101:15724-15729(2004).
- Suzuki Y.,et al.Submitted (APR-2005) to the EMBL/GenBank/DDBJ databases.
- Deloukas P.,et al.Nature 429:375-381(2004).
- Mural R.J.,et al.Submitted (SEP-2005) to the EMBL/GenBank/DDBJ databases.