

## PE-Cyanine7 Anti-Human CD45 (2D1) Antibody Catalog # ATB10449

### Specification

#### PE-Cyanine7 Anti-Human CD45 (2D1) Antibody - Product Information

Application	FC
Isotype	Mouse IgG1, kappa
Reactivity	Human

#### PE-Cyanine7 Anti-Human CD45 (2D1) Antibody - Additional Information

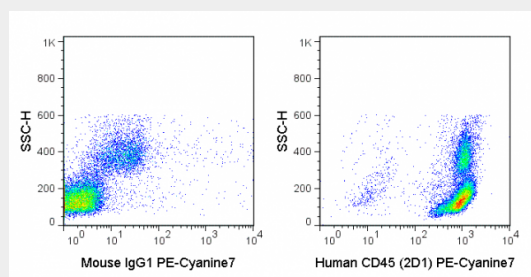
Gene ID	5788
---------	------

#### PE-Cyanine7 Anti-Human CD45 (2D1) Antibody - Protocols

Provided below are standard protocols that you may find useful for product applications.

- [Western Blot](#)
- [Blocking Peptides](#)
- [Dot Blot](#)
- [Immunohistochemistry](#)
- [Immunofluorescence](#)
- [Immunoprecipitation](#)
- [Flow Cytometry](#)
- [Cell Culture](#)

#### PE-Cyanine7 Anti-Human CD45 (2D1) Antibody - Images



Human PBMCs were stained with 5  $\mu$ L (0.25  $\mu$ g) PE-Cyanine7 Anti-Human CD45 (ATB10449) (right panel) or 0.25  $\mu$ g PE-Cyanine7 Mouse IgG1 isotype control (left panel).

#### PE-Cyanine7 Anti-Human CD45 (2D1) Antibody - Background

human CD45, one of the most abundant hematopoietic markers and one that is expressed on all leukocytes (the Leukocyte Common Antigen, LCA). CD45 is a protein tyrosine phosphatase existing in several isoforms, each being generated and expressed in cell-specific patterns. With its broad cell distribution, CD45 is critical for many leukocyte functions, regulating signal transduction and cell activation associated with the T cell receptor, B cell receptor, and IL-2 receptor. Other forms of CD45, with restricted cellular expression, include CD45R (B220), CD45RA, CD45RB, and CD45RO.