

**PE Anti-Human CD19 (SJ25C1) Antibody**  
Catalog # ATB10447**Specification****PE Anti-Human CD19 (SJ25C1) Antibody - Product Information**

Application	FC
Isotype	Mouse IgG1, kappa
Concentration	5 µL (0.25 µg)/test
Reactivity	Human
Formulation	10 mM NaH <sub>2</sub> PO <sub>4</sub> , 150 mM NaCl, 0.09% NaN <sub>3</sub> , 0.1% gelatin, pH7.2

**PE Anti-Human CD19 (SJ25C1) Antibody - Additional Information**

Gene ID	930
Gene Name	CD19
Alternative Name(s)	
Leu-12, B4	

**Format**

PE

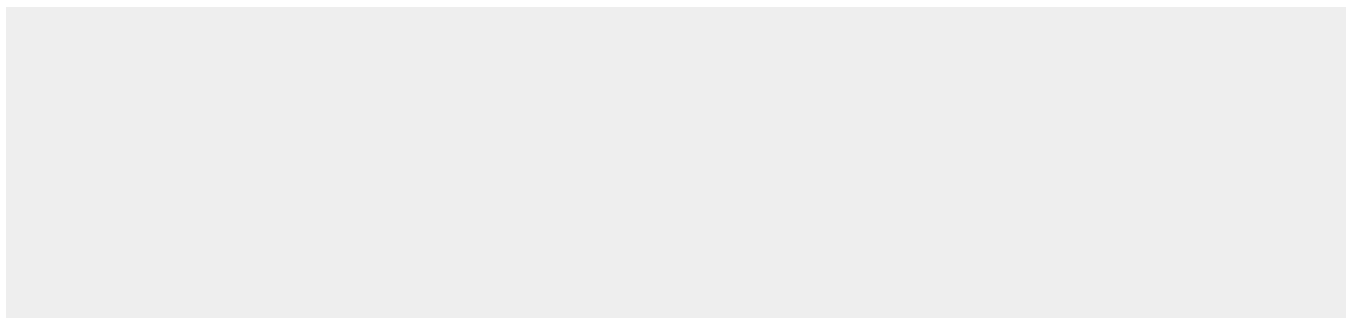
**Storage Conditions**

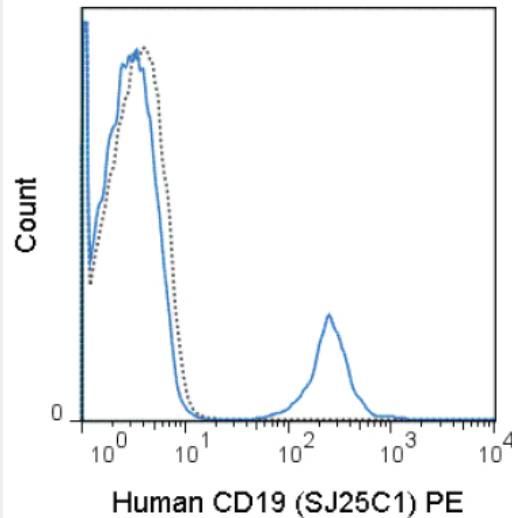
2-8°C protected from light

**PE Anti-Human CD19 (SJ25C1) Antibody - Protocols**

Provided below are standard protocols that you may find useful for product applications.

- [Western Blot](#)
- [Blocking Peptides](#)
- [Dot Blot](#)
- [Immunohistochemistry](#)
- [Immunofluorescence](#)
- [Immunoprecipitation](#)
- [Flow Cytometry](#)
- [Cell Culture](#)

**PE Anti-Human CD19 (SJ25C1) Antibody - Images**



Human peripheral blood lymphocytes were stained with 5 uL (0.25 ug) PE Anti-Human CD19 (ATB10447) (solid line) or 0.25 ug PE Mouse IgG1 isotype control (dashed line).

### **PE Anti-Human CD19 (SJ25C1) Antibody - Background**

The SJ25C1 antibody reacts with human CD19, a 95 kDa glycoprotein which acts as a co-receptor, along with CD21 (CR2), CD81 (TAPA-1) and CD225 (Leu13), in support of the functional B cell receptor (BCR). This complex provides antigen-specific recognition and subsequent activation of B cells to proliferate and differentiate into antibody-secreting cells (plasma cells) or memory B cells, which are crucial for secondary antigen encounter. Upon activation and tyrosine phosphorylation, the CD19 molecule can provide an anchor for cytoplasmic signaling proteins such as GRB2, SOS or PLCG2. CD19 is a lineage-differentiation marker, as its expression is detectable at the earliest B cell stages, through development, and is finally lost upon transition to mature plasma cells.

The SJ25C1 antibody is widely used as a phenotypic marker for CD19 expression on B cells, as well as on dendritic cell subsets

### **PE Anti-Human CD19 (SJ25C1) Antibody - References**

Piatosa B, Birbach M, Siewiera K, Ussowicz M, Kalwak K, Drabko K, Rekawek A, Tkaczyk K, Kurowski PN. 2013. *Cytometry Part B*. 84B: 179-186. (Flow Cytometry)

Sekiguchi DR, Smith SB, Sutter JA, Goodman NG, Propert K, Louzoun Y, Rogers W, Luning Prak ET. 2011. *Cytometry Part B*. 80B: 291-299. (Flow Cytometry)

Dörken B, Möller P, Pezzutto A, Schwartz-Albiez R, Moldenhauer G. B-cell antigens: CD19. In: Knapp W, Dörken B, Gilks WR, et al, ed. *Leucocyte Typing IV: White Cell Differentiation Antigens*. New York, NY: Oxford University Press; 1989:34-36. (Flow Cytometry)

Karahan GE, Eikmans M, Anholts JDH, Class FHJ and Heidt S. 2014. *Clin Exp Immunol*. 177(1): 333-340. (Flow Cytometry)

Bansal RR, Mackay CR, Moser B and Ebert M. 2012. *Eur J Immunol*. 42(1): 110-119. (Flow Cytometry)

Jourdan M, Caraux A, Caron G, Robert N, Fiol G, Rème T, Bolloré K, Vendrell JP, Le Gallou S, Mourcin F, De Vos J, Kassambara A, Duperray C, Hose D, Fest T, Tarte K and Klein B. 2011. *J Immunol*. 187(8): 3931-3941. (Flow Cytometry)

Goval J-J, Greimers R, Boniver J and de Leval L. 2006. J Histochem Cytochem. 54(1): 75-84.  
(Immunofluorescence - frozen tissue)