

**PE Anti-Human CD8 (SK1) Antibody**  
Catalog # ATB10443**Specification****PE Anti-Human CD8 (SK1) Antibody - Product Information**

Application	FC
Isotype	Mouse IgG1, kappa
Concentration	5 $\mu$ L (0.125 $\mu$ g)/test
Reactivity	Human
Formulation	10 mM NaH <sub>2</sub> PO <sub>4</sub> , 150 mM NaCl, 0.09% NaN <sub>3</sub> , 0.1% gelatin, pH7.2

**PE Anti-Human CD8 (SK1) Antibody - Additional Information**

Gene ID	925
Gene Name	CD8A
<b>Alternative Name(s)</b>	
CD8 alpha, leu-2a	

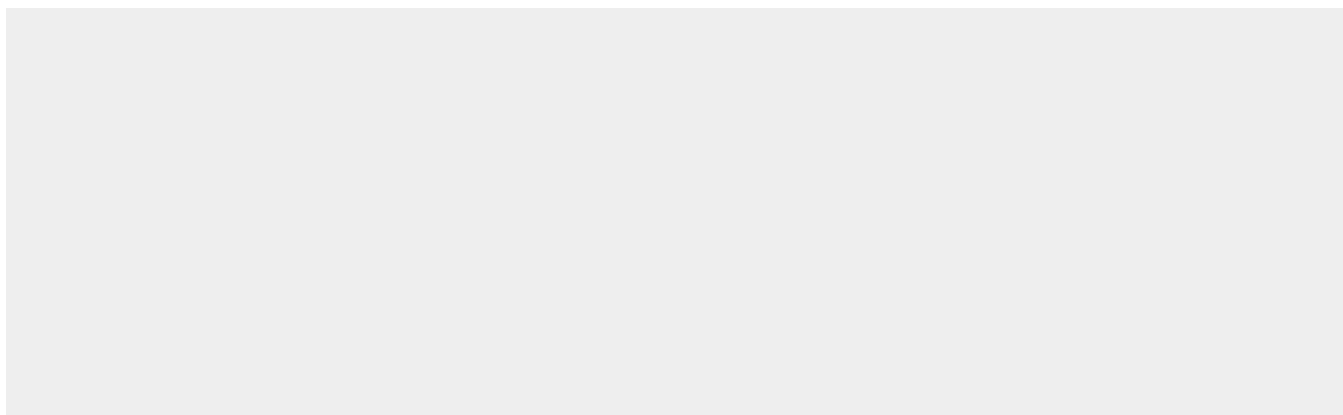
**Storage Conditions**

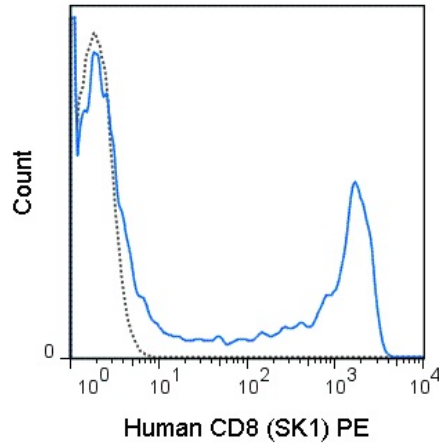
2-8°C protected from light

**PE Anti-Human CD8 (SK1) Antibody - Protocols**

Provided below are standard protocols that you may find useful for product applications.

- [Western Blot](#)
- [Blocking Peptides](#)
- [Dot Blot](#)
- [Immunohistochemistry](#)
- [Immunofluorescence](#)
- [Immunoprecipitation](#)
- [Flow Cytometry](#)
- [Cell Culture](#)

**PE Anti-Human CD8 (SK1) Antibody - Images**



Human peripheral blood lymphocytes were stained with 5 uL (0.125 ug) PE Anti-Human CD8 (ATB10443) (solid line) or 0.125 ug PE Mouse IgG1 isotype control (dashed line).

### **PE Anti-Human CD8 (SK1) Antibody - Background**

The SK1 antibody is specific for the 32-34 kDa alpha chain of human CD8, known as CD8a or CD8 alpha. CD8a can form a homodimer (CD8 alpha-alpha), but is more commonly expressed as a heterodimer with a second chain known as CD8b or CD8 beta. CD8 acts as a co-receptor for antigen recognition and subsequent T cell activation that is initiated upon binding of the T cell receptor (TCR) to antigen-bearing MHC Class I molecules. The cytoplasmic domains of CD8 provide binding sites for the tyrosine kinase lck, facilitating intracellular signaling events that lead to T cell activation, development, and cytotoxic effector functions. CD8+ cytotoxic T cells (CTLs) play an important role in inducing cell death of tumor cells, as well as cells infected by virus, bacteria or parasites.

The SK1 antibody is widely used as a phenotypic marker for CD8 on cytotoxic T cells, thymocytes, as well as on certain cell types that do not also express the TCR, including some NK cells and lymphoid dendritic cells. It is cross-reactive with CD8 in several non-human species, including Baboon, Chimpanzee, Cynomolgus and Rhesus. If used together with an alternative Anti-Human CD8a clone, RPA-T8, the SK1 antibody will not block binding of RPA-T8 to CD8a.