

**PE-Cy7 Anti-Human CD25 (BC96) Antibody**  
**Catalog # ATB10243****Specification**

---

**PE-Cy7 Anti-Human CD25 (BC96) Antibody - Product Information**

Application	FC
Isotype	Mouse IgG1, kappa
Concentration	5 uL (0.25 ug)/test
Reactivity	Human
Formulation	10 mM NaH <sub>2</sub> PO <sub>4</sub> , 150 mM NaCl, 0.09% Na <sub>3</sub> N, 0.1% gelatin, pH7.2
Host	Mouse

**PE-Cy7 Anti-Human CD25 (BC96) Antibody - Additional Information**

Gene ID	3559
Gene Name	IL2RA

**Alternative Name(s)**

Interleukin-2 Receptor alpha, IL-2Ra, IL2Ra, Tac

**Format**

PE-Cy7

**Preparation**

This monoclonal antibody was purified from tissue culture supernatant via affinity chromatography. The purified antibody was conjugated under optimal conditions, with unreacted dye removed from the preparation. It is recommended to store the product undiluted at 4°C, and protected from prolonged exposure to light. Do not freeze.

**Application Notes**

This antibody preparation has been pre-titrated and quality-tested for flow cytometry using an appropriate cell type. The antibody has been diluted for use at 5 uL per test, defined as the amount of antibody that will stain a cell sample in a final volume of approximately 100 uL. The number of cells within a sample should be determined empirically, but typically ranges between 1x10<sup>5</sup> to 1x10<sup>8</sup> cells.

**Storage Conditions**

2-8°C protected from light

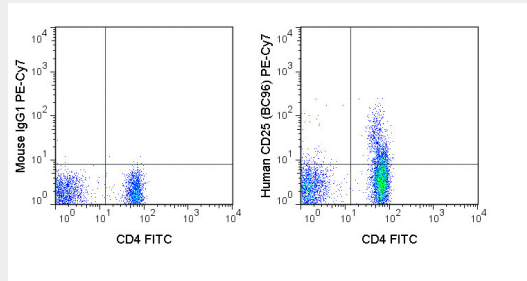
**PE-Cy7 Anti-Human CD25 (BC96) Antibody - Protocols**

Provided below are standard protocols that you may find useful for product applications.

- [Western Blot](#)
- [Blocking Peptides](#)
- [Dot Blot](#)
- [Immunohistochemistry](#)
- [Immunofluorescence](#)

- [Immunoprecipitation](#)
- [Flow Cytometry](#)
- [Cell Culture](#)

### PE-Cy7 Anti-Human CD25 (BC96) Antibody - Images



Human peripheral blood lymphocytes were stained with FITC Anti-Human CD4 (35-0048) and 5  $\mu$ L (0.25  $\mu$ g) PE-Cy7 Anti-Human CD25 (ATB10243) (right panel) or 0.25  $\mu$ g PE-Cy7 Mouse IgG1 isotype control (left panel).

### PE-Cy7 Anti-Human CD25 (BC96) Antibody - Background

The BC96 antibody is specific for human CD25, a 55 kDa surface protein also known as the Interleukin-2 Receptor alpha chain, or IL-2R alpha. CD25 may bind IL-2 by itself, although with low affinity and without induction of cell signaling. CD25 is also expressed within a high-affinity complex, along with the IL-2R beta chain (CD122) and the common gamma chain (CD132), to form a signaling receptor complex. Signaling via CD25 may modulate Th17 and Treg cell differentiation, and has been shown to play a role in the function of dendritic cells. The BC96 antibody may be used as a marker for expression of CD25 during T and B cell development, on activated mature T and B cells, and for its expression at high levels on natural T regulatory cells (nTreg cells) in the thymus or periphery, and on "induced" peripheral Tregs. This antibody is cross-reactive with CD25 in several non-human species, including Baboon, Chimpanzee, Cynomolgus and Rhesus.