

PE-Cy7 Anti-Human CD11c (3.9) Antibody
Catalog # ATB10238**Specification****PE-Cy7 Anti-Human CD11c (3.9) Antibody - Product Information**

Application	FC
Isotype	Mouse IgG1, kappa
Concentration	5 uL (1 ug)/test
Reactivity	Human
Formulation	10 mM NaH ₂ PO ₄ , 150 mM NaCl, 0.09% Na ₂ S ₂ O ₃ , 0.1% gelatin, pH7.2
Host	Mouse

PE-Cy7 Anti-Human CD11c (3.9) Antibody - Additional Information

Gene ID	3687
Gene Name	ITGAX
Alternative Name(s)	
CR4, integrin α X, ITGAX	

Format
PE-Cy7**Preparation**

This monoclonal antibody was purified from tissue culture supernatant via affinity chromatography. The purified antibody was conjugated under optimal conditions, with unreacted dye removed from the preparation. It is recommended to store the product undiluted at 4°C, and protected from prolonged exposure to light. Do not freeze.

Application Notes

This antibody preparation has been pre-titrated and quality-tested for flow cytometry using an appropriate cell type. The antibody has been diluted for use at 5 uL per test, defined as the amount of antibody that will stain a cell sample in a final volume of approximately 100 uL. The number of cells within a sample should be determined empirically, but typically ranges between 1x10⁵ to 1x10⁸ cells.

Storage Conditions

2-8°C protected from light

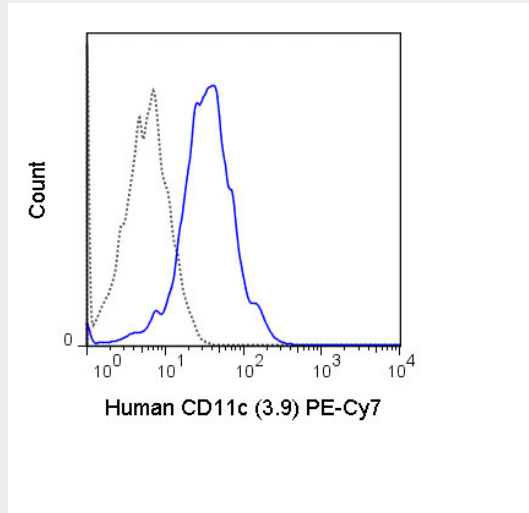
PE-Cy7 Anti-Human CD11c (3.9) Antibody - Protocols

Provided below are standard protocols that you may find useful for product applications.

- [Western Blot](#)
- [Blocking Peptides](#)
- [Dot Blot](#)
- [Immunohistochemistry](#)
- [Immunofluorescence](#)

- [Immunoprecipitation](#)
- [Flow Cytometry](#)
- [Cell Culture](#)

PE-Cy7 Anti-Human CD11c (3.9) Antibody - Images



Human peripheral blood monocytes were stained with 5 uL (1 ug) PE-Cy7 Anti-Human CD11c (ATB10238) (solid line) or 1 ug PE-Cy7 Mouse IgG1 isotype control (dashed line).

PE-Cy7 Anti-Human CD11c (3.9) Antibody - Background

The 3.9 antibody reacts with human CD11c, also known as integrin alpha X. This 150 kDa cell surface glycoprotein is part of a family of integrin receptors that mediate adhesion between cells (cell-cell) and components of the extracellular matrix, e.g. fibrinogen (cell-matrix). In addition, integrins are active signaling receptors which recruit leukocytes to inflammatory sites and promote cell activation. Complete, functional integrin receptors consist of distinct combinations of integrin chains which are differentially expressed. Integrin alpha X (CD11c) assembles with Integrin beta-2 (CD18) into a receptor known as CR4 which can bind and induce signaling through ICAMs and VCAM-1 on endothelial cells and can also facilitate removal of iC3b bearing foreign cells. The 3.9 antibody is widely used as a marker for CD11c expression on dendritic cells (DC), often in parallel with markers for CD11b, for identification of developmental stages and mature subsets of this cell type. CD11c is prominently expressed on tissue macrophages, and is also detected on activated neutrophils, granulocytes, some types of activated T cells and intestinal intraepithelial lymphocytes (IEL). The antibody is reported to be cross-reactive with Baboon, Chimpanzee, Cynomolgus and Rhesus CD11c.