

LDHB monoclonal antibody (M03), clone 3H4
Mouse monoclonal antibody raised against a full-length recombinant LDHB.
Catalog # AT4679a

Specification

LDHB monoclonal antibody (M03), clone 3H4 - Product Information

Application	WB
Primary Accession	P07195
Reactivity	Human
Host	Mouse
Clonality	Monoclonal
Isotype	IgG1 Kappa
Calculated MW	36638

LDHB monoclonal antibody (M03), clone 3H4 - Additional Information

Gene ID 3945

Other Names

L-lactate dehydrogenase B chain, LDH-B, 1.1.1.27, LDH heart subunit, LDH-H, Renal carcinoma antigen NY-REN-46, LDHB

Target/Specificity

LDHB (AAH02362.1, 1 a.a. ~ 334 a.a) full-length recombinant protein with GST tag. MW of the GST tag alone is 26 KDa.

Dilution

WB~~1:500~1000

Format

In 1x PBS, pH 7.4

Storage

Store at -20°C or lower. Aliquot to avoid repeated freezing and thawing.

Precautions

LDHB monoclonal antibody (M03), clone 3H4 is for research use only and not for use in diagnostic or therapeutic procedures.

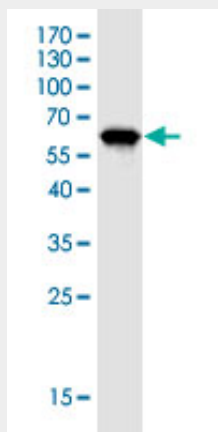
LDHB monoclonal antibody (M03), clone 3H4 - Protocols

Provided below are standard protocols that you may find useful for product applications.

- [Western Blot](#)
- [Blocking Peptides](#)
- [Dot Blot](#)
- [Immunohistochemistry](#)

- [Immunofluorescence](#)
- [Immunoprecipitation](#)
- [Flow Cytometry](#)
- [Cell Culture](#)

LDHB monoclonal antibody (M03), clone 3H4 - Images



Western Blot detection against Immunogen (62.48 KDa) .