

ACE2 monoclonal antibody (M05), clone CC11
Mouse monoclonal antibody raised against a partial recombinant ACE2.
Catalog # AT4676a

Specification

ACE2 monoclonal antibody (M05), clone CC11 - Product Information

Application	WB
Primary Accession	O9BYF1
Other Accession	A0A7D6JAD5 , O9UFZ6
Reactivity	Human
Host	Mouse
Clonality	Monoclonal
Isotype	IgG2a Kappa
Calculated MW	92463

ACE2 monoclonal antibody (M05), clone CC11 - Additional Information

Gene ID 59272

Other Names

Angiotensin-converting enzyme 2, Angiotensin-converting enzyme homolog, ACEH, Angiotensin-converting enzyme-related carboxypeptidase, ACE-related carboxypeptidase, Metalloprotease MPROT15

Target/Specificity

ACE2 (NP_068576.1, 18 a.a. ~ 740 a.a) partial recombinant protein with GST tag.

Dilution

WB~~1:500~1000

Format

In 1x PBS, pH 7.4

Storage

Store at -20°C or lower. Aliquot to avoid repeated freezing and thawing.

Precautions

ACE2 monoclonal antibody (M05), clone CC11 is for research use only and not for use in diagnostic or therapeutic procedures.

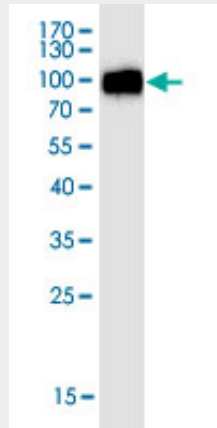
ACE2 monoclonal antibody (M05), clone CC11 - Protocols

Provided below are standard protocols that you may find useful for product applications.

- [Western Blot](#)
- [Blocking Peptides](#)
- [Dot Blot](#)

- [Immunohistochemistry](#)
- [Immunofluorescence](#)
- [Immunoprecipitation](#)
- [Flow Cytometry](#)
- [Cell Culture](#)

ACE2 monoclonal antibody (M05), clone CC11 - Images



Western Blot detection against Immunogen (82.61 KDa) .