

**CTLA4 monoclonal antibody (M11), clone 5C12**  
**Mouse monoclonal antibody raised against a partial recombinant CTLA4.**  
**Catalog # AT4674a**

**Specification**

---

**CTLA4 monoclonal antibody (M11), clone 5C12 - Product Information**

Application	WB
Primary Accession	<a href="#">P16410</a>
Other Accession	<a href="#">BC074842</a>
Reactivity	Human
Host	Mouse
Clonality	Monoclonal
Isotype	IgG1 Kappa
Calculated MW	24656

**CTLA4 monoclonal antibody (M11), clone 5C12 - Additional Information**

**Gene ID** 1493

**Other Names**

Cytotoxic T-lymphocyte protein 4, Cytotoxic T-lymphocyte-associated antigen 4, CTLA-4, CD152, CTLA4, CD152

**Target/Specificity**

CTLA4 (AAH74842.1, 37 a.a. ~ 161 a.a) partial recombinant protein with GST tag.

**Dilution**

WB~~1:500~1000

**Format**

In 1x PBS, pH 7.4

**Storage**

Store at -20°C or lower. Aliquot to avoid repeated freezing and thawing.

**Precautions**

CTLA4 monoclonal antibody (M11), clone 5C12 is for research use only and not for use in diagnostic or therapeutic procedures.

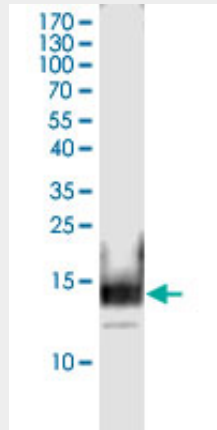
**CTLA4 monoclonal antibody (M11), clone 5C12 - Protocols**

Provided below are standard protocols that you may find useful for product applications.

- [Western Blot](#)
- [Blocking Peptides](#)
- [Dot Blot](#)
- [Immunohistochemistry](#)

- [Immunofluorescence](#)
- [Immunoprecipitation](#)
- [Flow Cytometry](#)
- [Cell Culture](#)

**CTLA4 monoclonal antibody (M11), clone 5C12 - Images**



Western Blot detection against Immunogen (15.95 KDa) .