

CTLA4 monoclonal antibody (M27), clone 7H8
Mouse monoclonal antibody raised against a partial recombinant CTLA4.
Catalog # AT4673a

Specification

CTLA4 monoclonal antibody (M27), clone 7H8 - Product Information

Application	WB
Primary Accession	P16410
Other Accession	BC074842
Reactivity	Human
Host	Mouse
Clonality	Monoclonal
Isotype	IgG1 Kappa
Calculated MW	24656

CTLA4 monoclonal antibody (M27), clone 7H8 - Additional Information

Gene ID 1493

Other Names

Cytotoxic T-lymphocyte protein 4, Cytotoxic T-lymphocyte-associated antigen 4, CTLA-4, CD152, CTLA4, CD152

Target/Specificity

CTLA4 (AAH74842.1, 37 a.a. ~ 161 a.a) partial recombinant protein with GST tag.

Dilution

WB~~1:500~1000

Format

In 1x PBS, pH 7.4

Storage

Store at -20°C or lower. Aliquot to avoid repeated freezing and thawing.

Precautions

CTLA4 monoclonal antibody (M27), clone 7H8 is for research use only and not for use in diagnostic or therapeutic procedures.

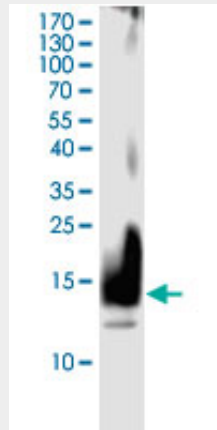
CTLA4 monoclonal antibody (M27), clone 7H8 - Protocols

Provided below are standard protocols that you may find useful for product applications.

- [Western Blot](#)
- [Blocking Peptides](#)
- [Dot Blot](#)
- [Immunohistochemistry](#)

- [Immunofluorescence](#)
- [Immunoprecipitation](#)
- [Flow Cytometry](#)
- [Cell Culture](#)

CTLA4 monoclonal antibody (M27), clone 7H8 - Images



Western Blot detection against Immunogen (15.95 KDa) .