

PSMA8 monoclonal antibody (M04A), clone 5A8
Purified Mouse Monoclonal Antibody (Mab)
Catalog # AT4670a

Specification

PSMA8 monoclonal antibody (M04A), clone 5A8 - Product Information

Application	WB
Primary Accession	Q8TAA3
Reactivity	Human, Mouse, Rat
Host	Mouse
Clonality	Monoclonal
Isotype	IgG1 Kappa
Calculated MW	28530

PSMA8 monoclonal antibody (M04A), clone 5A8 - Additional Information

Gene ID 143471

Other Names
MGC26605, PSMA7L

Target/Specificity
PSMA8 (NP_653263, 143 a.a. ~ 242 a.a) partial recombinant protein with GST tag. MW of the GST tag alone is 26 KDa.

Storage
Store at -20°C or lower. Aliquot to avoid repeated freezing and thawing.

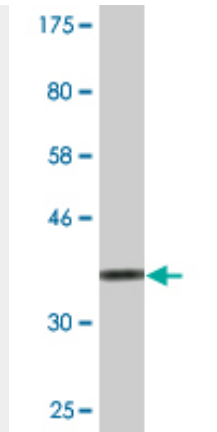
Precautions
PSMA8 monoclonal antibody (M04A), clone 5A8 is for research use only and not for use in diagnostic or therapeutic procedures.

PSMA8 monoclonal antibody (M04A), clone 5A8 - Protocols

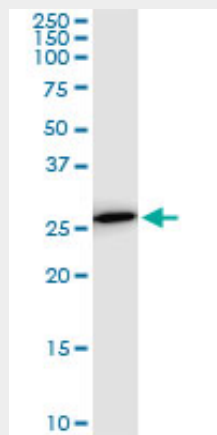
Provided below are standard protocols that you may find useful for product applications.

- [Western Blot](#)
- [Blocking Peptides](#)
- [Dot Blot](#)
- [Immunohistochemistry](#)
- [Immunofluorescence](#)
- [Immunoprecipitation](#)
- [Flow Cytometry](#)
- [Cell Culture](#)

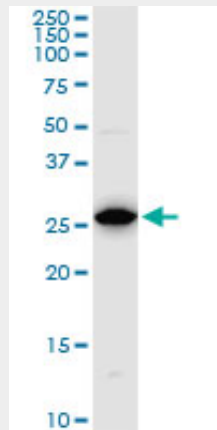
PSMA8 monoclonal antibody (M04A), clone 5A8 - Images



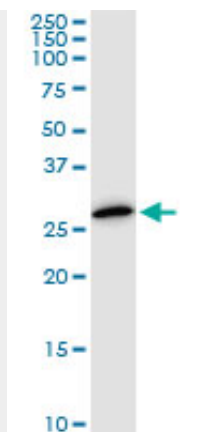
Western Blot detection against Immunogen (36.74 KDa) .



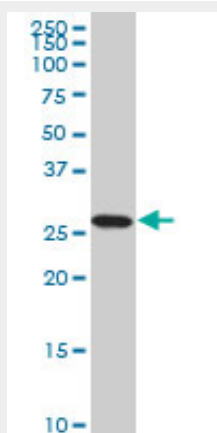
PSMA8 monoclonal antibody (M04A), clone 5A8. Western Blot analysis of PSMA8 expression in PC-12.



PSMA8 monoclonal antibody (M04A), clone 5A8. Western Blot analysis of PSMA8 expression in Raw 264.7.



PSMA8 monoclonal antibody (M04A), clone 5A8. Western Blot analysis of PSMA8 expression in NIH/3T3.



PSMA8 monoclonal antibody (M04A), clone 5A8. Western Blot analysis of PSMA8 expression in K-562.