

ZIC1 Antibody (monoclonal) (M01)

Mouse monoclonal antibody raised against a partial recombinant ZIC1.

Catalog # AT4578a

Specification

ZIC1 Antibody (monoclonal) (M01) - Product Information

Application	WB, E
Primary Accession	O15915
Other Accession	NM_003412
Reactivity	Human
Host	mouse
Clonality	Monoclonal
Isotype	IgG
Calculated MW	48309

ZIC1 Antibody (monoclonal) (M01) - Additional Information

Gene ID 7545

Other Names

Zinc finger protein ZIC 1, Zinc finger protein 201, Zinc finger protein of the cerebellum 1, ZIC1, ZIC, ZNF201

Target/Specificity

ZIC1 (NP_003403, 2 a.a. ~ 95 a.a) partial recombinant protein with GST tag. MW of the GST tag alone is 26 KDa.

Dilution

WB~~1:500~1000

Format

Clear, colorless solution in phosphate buffered saline, pH 7.2 .

Storage

Store at -20°C or lower. Aliquot to avoid repeated freezing and thawing.

Precautions

ZIC1 Antibody (monoclonal) (M01) is for research use only and not for use in diagnostic or therapeutic procedures.

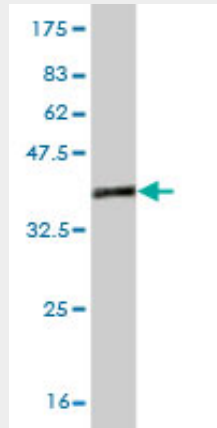
ZIC1 Antibody (monoclonal) (M01) - Protocols

Provided below are standard protocols that you may find useful for product applications.

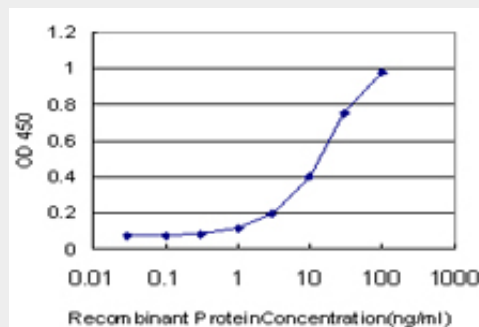
- [Western Blot](#)
- [Blocking Peptides](#)
- [Dot Blot](#)

- [Immunohistochemistry](#)
- [Immunofluorescence](#)
- [Immunoprecipitation](#)
- [Flow Cytometry](#)
- [Cell Culture](#)

ZIC1 Antibody (monoclonal) (M01) - Images



Antibody Reactive Against Recombinant Protein. Western Blot detection against Immunogen (36.08 kDa) .



Detection limit for recombinant GST tagged ZIC1 is approximately 0.3ng/ml as a capture antibody.

ZIC1 Antibody (monoclonal) (M01) - Background

This gene encodes a member of the ZIC family of C2H2-type zinc finger proteins. Members of this family are important during development. Aberrant expression of this gene is seen in medulloblastoma, a childhood brain tumor. This gene is closely linked to the gene encoding zinc finger protein of the cerebellum 4, a related family member on chromosome 3. This gene encodes a transcription factor that can bind and transactivate the apolipoprotein E gene.

ZIC1 Antibody (monoclonal) (M01) - References

ZIC1 is downregulated through promoter hypermethylation in gastric cancer. Wang LJ, et al. *Biochem Biophys Res Commun*, 2009 Feb 20. PMID 19135984. Genome-wide association analysis of susceptibility and clinical phenotype in multiple sclerosis. Baranzini SE, et al. *Hum Mol Genet*, 2009 Feb 15. PMID 19010793. Inhibition of translation in living eukaryotic cells by an RNA G-quadruplex motif. Arora A, et al. *RNA*, 2008 Jul. PMID 18515550. Toward a confocal subcellular atlas of the human proteome. Barbe L, et al. *Mol Cell Proteomics*, 2008 Mar. PMID 18029348. ZIC1 gene expression is controlled by DNA and histone methylation in mesenchymal proliferations. Pourebrahim R, et al. *FEBS Lett*, 2007 Oct 30. PMID 17936758.