

## WASF2 Antibody (monoclonal) (M01)

Mouse monoclonal antibody raised against a partial recombinant WASF2.

Catalog # AT4525a

### Specification

---

#### WASF2 Antibody (monoclonal) (M01) - Product Information

Application	WB, E
Primary Accession	<a href="#">O9Y6W5</a>
Other Accession	<a href="#">NM_006990</a>
Reactivity	Human
Host	mouse
Clonality	Monoclonal
Isotype	IgG2b Kappa
Calculated MW	54284

#### WASF2 Antibody (monoclonal) (M01) - Additional Information

Gene ID 10163

##### Other Names

Wiskott-Aldrich syndrome protein family member 2, WASP family protein member 2, Protein WAVE-2, Verprolin homology domain-containing protein 2, WASF2, WAVE2

##### Target/Specificity

WASF2 (NP\_008921, 73 a.a. ~ 172 a.a) partial recombinant protein with GST tag. MW of the GST tag alone is 26 KDa.

##### Dilution

WB~~1:500~1000

##### Format

Clear, colorless solution in phosphate buffered saline, pH 7.2 .

##### Storage

Store at -20°C or lower. Aliquot to avoid repeated freezing and thawing.

##### Precautions

WASF2 Antibody (monoclonal) (M01) is for research use only and not for use in diagnostic or therapeutic procedures.

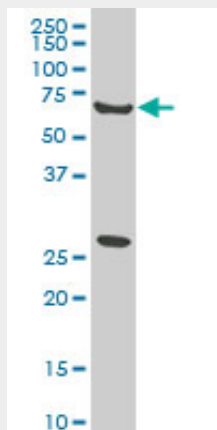
#### WASF2 Antibody (monoclonal) (M01) - Protocols

Provided below are standard protocols that you may find useful for product applications.

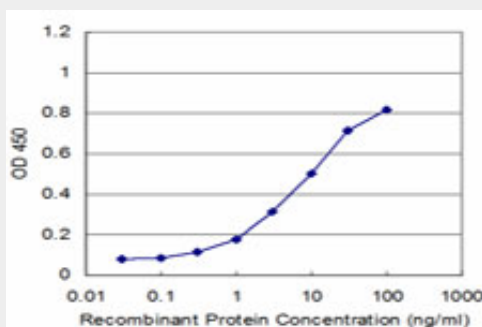
- [Western Blot](#)
- [Blocking Peptides](#)
- [Dot Blot](#)

- [Immunohistochemistry](#)
- [Immunofluorescence](#)
- [Immunoprecipitation](#)
- [Flow Cytometry](#)
- [Cell Culture](#)

### WASF2 Antibody (monoclonal) (M01) - Images



WASF2 monoclonal antibody (M01), clone 1F7. Western Blot analysis of WASF2 expression in HeLa ( Cat # L013V1 ).



Detection limit for recombinant GST tagged WASF2 is approximately 0.3ng/ml as a capture antibody.

### WASF2 Antibody (monoclonal) (M01) - Background

This gene encodes a member of the Wiskott-Aldrich syndrome protein family. The gene product is a protein that forms a multiprotein complex that links receptor kinases and actin. Binding to actin occurs through a C-terminal verprolin homology domain in all family members. The multiprotein complex serves to transduce signals that involve changes in cell shape, motility or function. The published map location (PMID:10381382) has been changed based on recent genomic sequence comparisons, which indicate that the expressed gene is located on chromosome 1, and a pseudogene may be located on chromosome X.

### WASF2 Antibody (monoclonal) (M01) - References

Directional control of WAVE2 membrane targeting by EB1 and phosphatidylinositol 3,4,5-triphosphate. Takahashi K, et al. Cell Signal, 2010 Mar. PMID 19925864. Activation of the WAVE complex by coincident signals controls actin assembly. Lebensohn AM, et al. Mol Cell, 2009 Nov 13. PMID 19917258. Metastatic potential of lung squamous cell carcinoma associated with HSPC300 through its interaction with WAVE2. Cai X, et al. Lung Cancer, 2009 Sep. PMID 19576655. BetaPIX and GIT1 regulate HGF-induced lamellipodia formation and WAVE2 transport.

Morimura S, et al. Biochem Biophys Res Commun, 2009 May 8. PMID 19303398. Membrane transport of WAVE2 and lamellipodia formation require Pak1 that mediates phosphorylation and recruitment of stathmin/Op18 to Pak1-WAVE2-kinesin complex. Takahashi K, et al. Cell Signal, 2009 May. PMID 19162178.