

VPREB3 Antibody (monoclonal) (M08)

Mouse monoclonal antibody raised against a partial recombinant VPREB3.

Catalog # AT4517a

Specification

VPREB3 Antibody (monoclonal) (M08) - Product Information

Application	WB
Primary Accession	O9UKI3
Other Accession	NM_013378
Reactivity	Human
Host	mouse
Clonality	Monoclonal
Isotype	IgG1 Kappa
Calculated MW	13710

VPREB3 Antibody (monoclonal) (M08) - Additional Information

Gene ID 29802

Other Names

Pre-B lymphocyte protein 3, N27C7-2, Protein VPreB3, VPREB3

Target/Specificity

VPREB3 (NP_037510, 24 a.a. ~ 123 a.a) partial recombinant protein with GST tag. MW of the GST tag alone is 26 KDa.

Dilution

WB ~ 1:500 ~ 1000

Format

Clear, colorless solution in phosphate buffered saline, pH 7.2 .

Storage

Store at -20°C or lower. Aliquot to avoid repeated freezing and thawing.

Precautions

VPREB3 Antibody (monoclonal) (M08) is for research use only and not for use in diagnostic or therapeutic procedures.

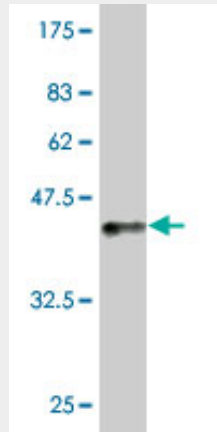
VPREB3 Antibody (monoclonal) (M08) - Protocols

Provided below are standard protocols that you may find useful for product applications.

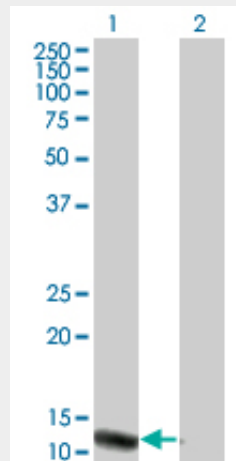
- [Western Blot](#)
- [Blocking Peptides](#)
- [Dot Blot](#)
- [Immunohistochemistry](#)

- [Immunofluorescence](#)
- [Immunoprecipitation](#)
- [Flow Cytometry](#)
- [Cell Culture](#)

VPREB3 Antibody (monoclonal) (M08) - Images



Antibody Reactive Against Recombinant Protein. Western Blot detection against Immunogen (36.74 KDa) .



Western Blot analysis of VPREB3 expression in transfected 293T cell line by VPREB3 monoclonal antibody (M08), clone 4H8.

Lane 1: VPREB3 transfected lysate (13.7 KDa).
Lane 2: Non-transfected lysate.

VPREB3 Antibody (monoclonal) (M08) - Background

The protein encoded by this gene is the human homolog of the mouse VpreB3 (8HS20) protein, and is specifically expressed in cell lines representative of all stages of B-cell differentiation. It is also related to VPREB1 and other members of the immunoglobulin supergene family. This protein associates with membrane mu heavy chains early in the course of pre-B cell receptor biosynthesis. The precise function of the protein is not known, but it may contribute to mu chain transport in pre-B cells.

VPREB3 Antibody (monoclonal) (M08) - References

Toward a confocal subcellular atlas of the human proteome. Barbe L, et al. Mol Cell Proteomics, 2008 Mar. PMID 18029348. Assembly of the kappa preB receptor requires a V kappa-like protein encoded by a germline transcript. Rangel R, et al. J Biol Chem, 2005 May 6. PMID 15757909. The status, quality, and expansion of the NIH full-length cDNA project: the Mammalian Gene Collection (MGC). Gerhard DS, et al. Genome Res, 2004 Oct. PMID 15489334. A genome annotation-driven approach to cloning the human ORFeome. Collins JE, et al. Genome Biol, 2004. PMID 15461802. Binding of free immunoglobulin light chains to VpreB3 inhibits their maturation and secretion in chicken B cells. Rosnet O, et al. J Biol Chem, 2004 Mar 12. PMID 14670953.