

UBE2L3 Antibody (monoclonal) (M01)

Mouse monoclonal antibody raised against a full length recombinant UBE2L3.

Catalog # AT4439a

Specification

UBE2L3 Antibody (monoclonal) (M01) - Product Information

Application	IF, WB
Primary Accession	P68036
Other Accession	BC053368
Reactivity	Human
Host	mouse
Clonality	Monoclonal
Isotype	IgG2a kappa
Calculated MW	17862

UBE2L3 Antibody (monoclonal) (M01) - Additional Information

Gene ID 7332

Other NamesUbiquitin-conjugating enzyme E2 L3, L-UBC, Ubch7, Ubiquitin carrier protein L3,
Ubiquitin-conjugating enzyme E2-F1, Ubiquitin-protein ligase L3, UBE2L3, UBCE7, UBCH7**Target/Specificity**

UBE2L3 (AAH53368, 1 a.a. ~ 154 a.a) full-length recombinant protein with GST tag. MW of the GST tag alone is 26 KDa.

Dilution

WB~~1:500~1000

Format

Clear, colorless solution in phosphate buffered saline, pH 7.2 .

Storage

Store at -20°C or lower. Aliquot to avoid repeated freezing and thawing.

Precautions

UBE2L3 Antibody (monoclonal) (M01) is for research use only and not for use in diagnostic or therapeutic procedures.

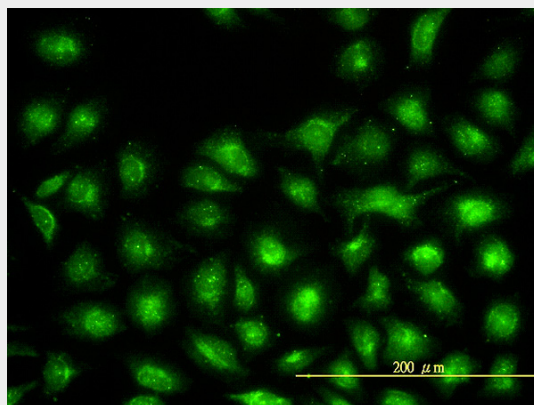
UBE2L3 Antibody (monoclonal) (M01) - Protocols

Provided below are standard protocols that you may find useful for product applications.

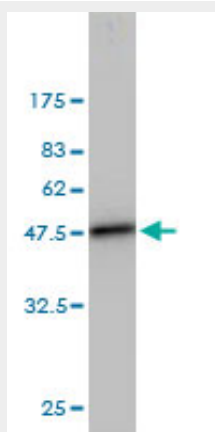
- [Western Blot](#)
- [Blocking Peptides](#)
- [Dot Blot](#)

- [Immunohistochemistry](#)
- [Immunofluorescence](#)
- [Immunoprecipitation](#)
- [Flow Cytometry](#)
- [Cell Culture](#)

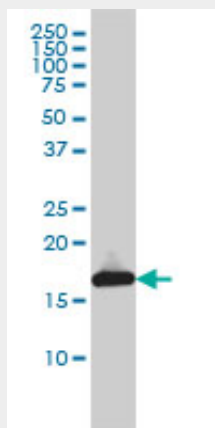
UBE2L3 Antibody (monoclonal) (M01) - Images



Immunofluorescence of monoclonal antibody to UBE2L3 on HeLa cell. [antibody concentration 10 ug/ml]



Antibody Reactive Against Recombinant Protein. Western Blot detection against Immunogen (42.68 KDa) .



UBE2L3 monoclonal antibody (M01), clone 3B7 Western Blot analysis of UBE2L3 expression in

K-562 ((Cat # AT4439a)

UBE2L3 Antibody (monoclonal) (M01) - Background

The modification of proteins with ubiquitin is an important cellular mechanism for targeting abnormal or short-lived proteins for degradation. Ubiquitination involves at least three classes of enzymes: ubiquitin-activating enzymes (E1s), ubiquitin-conjugating enzymes (E2s) and ubiquitin-protein ligases (E3s). This gene encodes a member of the E2 ubiquitin-conjugating enzyme family. This enzyme is demonstrated to participate in the ubiquitination of p53, c-Fos, and the NF- κ B precursor p105 in vitro. Several alternatively spliced transcript variants have been found for this gene.

UBE2L3 Antibody (monoclonal) (M01) - References

Analysis of SNPs with an effect on gene expression identifies UBE2L3 and BCL3 as potential new risk genes for Crohn's disease. Fransen K, et al. Hum Mol Genet, 2010 Sep 1. PMID 20601676. Multiple common variants for celiac disease influencing immune gene expression. Dubois PC, et al. Nat Genet, 2010 Apr. PMID 20190752. Kinetics of the transfer of ubiquitin from UbCH7 to E6AP. Purbeck C, et al. Biochemistry, 2010 Feb 23. PMID 20039703. Genome-wide association study in a Chinese Han population identifies nine new susceptibility loci for systemic lupus erythematosus. Han JW, et al. Nat Genet, 2009 Nov. PMID 19838193. E2-c-Cbl recognition is necessary but not sufficient for ubiquitination activity. Huang A, et al. J Mol Biol, 2009 Jan 16. PMID 18996392.