

UBE2D2 Antibody (monoclonal) (M02)

Mouse monoclonal antibody raised against a partial recombinant UBE2D2.

Catalog # AT4432a

Specification

UBE2D2 Antibody (monoclonal) (M02) - Product Information

Application	WB, IHC, E
Primary Accession	P62837
Other Accession	NM_003339
Reactivity	Human, Mouse, Rat
Host	Mouse
Clonality	Monoclonal
Isotype	IgG2a Kappa
Calculated MW	16735

UBE2D2 Antibody (monoclonal) (M02) - Additional Information

Gene ID 7322

Other Names

Ubiquitin-conjugating enzyme E2 D2, Ubiquitin carrier protein D2, Ubiquitin-conjugating enzyme E2(17)KB 2, Ubiquitin-conjugating enzyme E2-17 kDa 2, Ubiquitin-protein ligase D2, p53-regulated ubiquitin-conjugating enzyme 1, UBE2D2, PUBC1, UBC4, UBC5B, UBCH4, UBCH5B

Target/Specificity

UBE2D2 (NP_003330, 1 a.a. ~ 94 a.a) partial recombinant protein with GST tag. MW of the GST tag alone is 26 kDa.

Dilution

WB ~ ~ 1:500 ~ 1000

Format

Clear, colorless solution in phosphate buffered saline, pH 7.2 .

Storage

Store at -20°C or lower. Aliquot to avoid repeated freezing and thawing.

Precautions

UBE2D2 Antibody (monoclonal) (M02) is for research use only and not for use in diagnostic or therapeutic procedures.

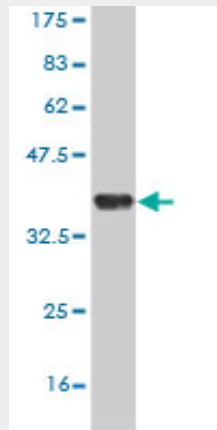
UBE2D2 Antibody (monoclonal) (M02) - Protocols

Provided below are standard protocols that you may find useful for product applications.

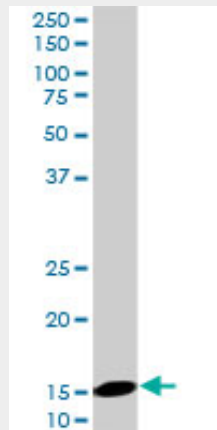
- [Western Blot](#)
- [Blocking Peptides](#)

- [Dot Blot](#)
- [Immunohistochemistry](#)
- [Immunofluorescence](#)
- [Immunoprecipitation](#)
- [Flow Cytometry](#)
- [Cell Culture](#)

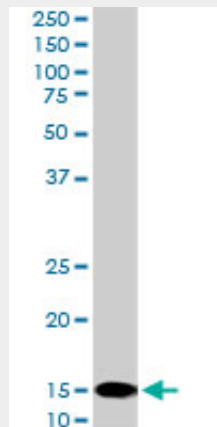
UBE2D2 Antibody (monoclonal) (M02) - Images



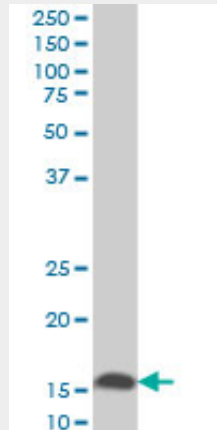
Antibody Reactive Against Recombinant Protein. Western Blot detection against Immunogen (36.08 kDa) .



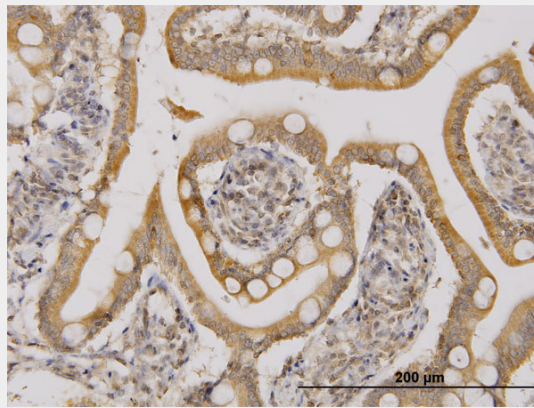
UBE2D2 monoclonal antibody (M02), clone 4A1. Western Blot analysis of UBE2D2 expression in PC-12 ((Cat # AT4432a)



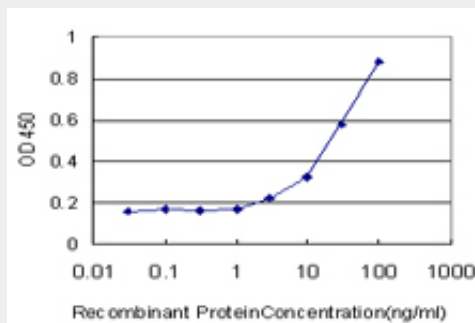
UBE2D2 monoclonal antibody (M02), clone 4A1. Western Blot analysis of UBE2D2 expression in Raw 264.7 ((Cat # AT4432a)



UBE2D2 monoclonal antibody (M02), clone 4A1 Western Blot analysis of UBE2D2 expression in NIH/3T3 ((Cat # AT4432a)



Immunoperoxidase of monoclonal antibody to UBE2D2 on formalin-fixed paraffin-embedded human small Intestine. [antibody concentration 3 ug/ml]



Detection limit for recombinant GST tagged UBE2D2 is approximately 3ng/ml as a capture antibody.

UBE2D2 Antibody (monoclonal) (M02) - Background

The modification of proteins with ubiquitin is an important cellular mechanism for targeting abnormal or short-lived proteins for degradation. Ubiquitination involves at least three classes of enzymes: ubiquitin-activating enzymes, or E1s, ubiquitin-conjugating enzymes, or E2s, and ubiquitin-protein ligases, or E3s. This gene encodes a member of the E2 ubiquitin-conjugating enzyme family. This enzyme functions in the ubiquitination of the tumor-suppressor protein p53, which is induced by an E3 ubiquitin-protein ligase. Two alternatively spliced transcript variants have

been found for this gene and they encode distinct isoforms.

UBE2D2 Antibody (monoclonal) (M02) - References

1. A 4-gene signature predicts survival of patients with resected adenocarcinoma of the esophagus, junction, and gastric cardia. Peters CJ, Rees JR, Hardwick RH, Hardwick JS, Vowler SL, Ong CA, Zhang C, Save V, O'Donovan M, Rassi D, Alderson D, Caldas C, Fitzgerald RC, OCCAMS Study Group. *Gastroenterology* (2009), doi: 10.1053/j.gastro.2010.05.080.