

UBE2C Antibody (monoclonal) (M01)

Mouse monoclonal antibody raised against a partial recombinant UBE2C.

Catalog # AT4429a

Specification

UBE2C Antibody (monoclonal) (M01) - Product Information

Application	IF, WB, IHC, E
Primary Accession	O00762
Other Accession	NM_007019
Reactivity	Human
Host	mouse
Clonality	Monoclonal
Isotype	IgG2a Kappa
Calculated MW	19652

UBE2C Antibody (monoclonal) (M01) - Additional Information**Gene ID** 11065**Other Names**

Ubiquitin-conjugating enzyme E2 C, UbcH10, Ubiquitin carrier protein C, Ubiquitin-protein ligase C, UBE2C, UBCH10

Target/Specificity

UBE2C (NP_008950, 70 a.a. ~ 179 a.a) partial recombinant protein with GST tag. MW of the GST tag alone is 26 KDa.

Dilution

WB~~1:500~1000

Format

Clear, colorless solution in phosphate buffered saline, pH 7.2 .

Storage

Store at -20°C or lower. Aliquot to avoid repeated freezing and thawing.

Precautions

UBE2C Antibody (monoclonal) (M01) is for research use only and not for use in diagnostic or therapeutic procedures.

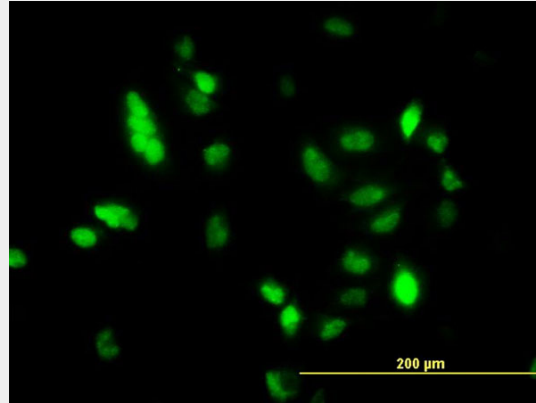
UBE2C Antibody (monoclonal) (M01) - Protocols

Provided below are standard protocols that you may find useful for product applications.

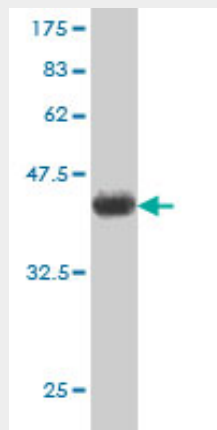
- [Western Blot](#)
- [Blocking Peptides](#)
- [Dot Blot](#)

- [Immunohistochemistry](#)
- [Immunofluorescence](#)
- [Immunoprecipitation](#)
- [Flow Cytometry](#)
- [Cell Culture](#)

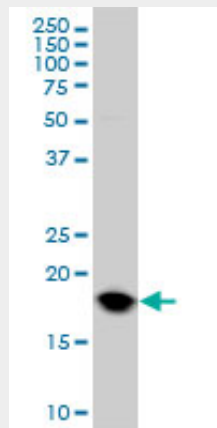
UBE2C Antibody (monoclonal) (M01) - Images



Immunofluorescence of monoclonal antibody to UBE2C on HeLa cell. [antibody concentration 10 ug/ml]

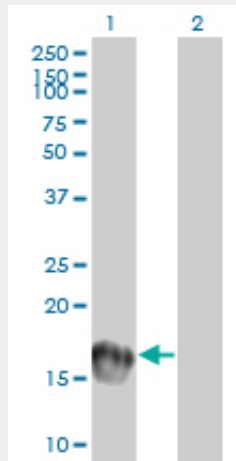


Antibody Reactive Against Recombinant Protein. Western Blot detection against Immunogen (37.84 KDa) .



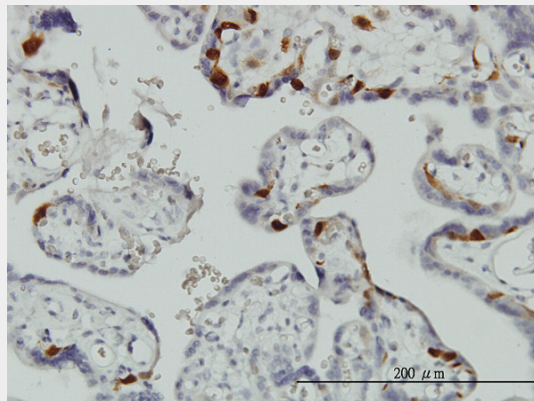
UBE2C monoclonal antibody (M01), clone 9D3 Western Blot analysis of UBE2C expression in HeLa

(Cat # AT4429a)

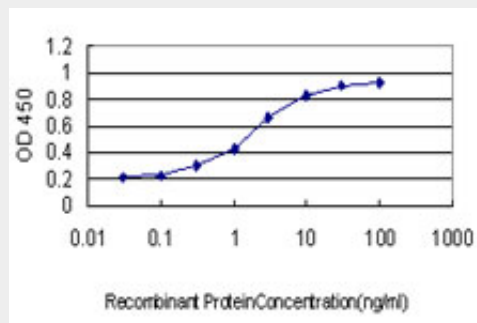


Western Blot analysis of UBE2C expression in transfected 293T cell line by UBE2C monoclonal antibody (M01), clone 9D3.

Lane 1: UBE2C transfected lysate(19.7 kDa).
 Lane 2: Non-transfected lysate.



Immunoperoxidase of monoclonal antibody to UBE2C on formalin-fixed paraffin-embedded human placenta. [antibody concentration 3 ug/ml]



Detection limit for recombinant GST tagged UBE2C is approximately 0.03ng/ml as a capture antibody.

UBE2C Antibody (monoclonal) (M01) - References

1.Ubiquitin-Conjugating Enzyme UBE2C Is Highly Expressed in Breast Microcalcification Lesions.Chou CP, Huang NC, Jhuang SJ, Pan HB, Peng NJ, Cheng JT, Chen CF, Chen JJ, Chang THPLoS

One. 2014 Apr 3;9(4):e93934. doi: 10.1371/journal.pone.0093934. eCollection 2014.2.Oligonucleotide Microarray Identifies Genes Differentially Expressed during Tumorigenesis of DMBA-Induced Pancreatic Cancer in Rats.Guo JC, Li J, Yang YC, Zhou L, Zhang TP, Zhao YPPLoS One. 2013 Dec 23;8(12):e82910. doi: 10.1371/journal.pone.0082910.3.UBE2C is a marker of unfavorable prognosis in bladder cancer after radical cystectomy.Morikawa T, Kawai T, Abe H, Kume H, Homma Y, Fukayama MInt J Clin Exp Pathol. 2013 Jun 15;6(7):1367-74. Print 2013.4.Multicenter Validation of Cyclin D1, MCM7, TRIM29, and UBE2C as Prognostic Protein Markers in Non-Muscle Invasive Bladder Cancer.Fristrup N, Birkenkamp-Demtroder K, Reinert T, Sanchez-Carbayo M, Segersten U, Malmstrom PU, Palou J, Alvarez-Mugica M, Pan CC, Ulhoi BP, Borre M, Orntoft TF, Dyrskjot L.Am J Pathol. 2012 Nov 28. pii: S0002-9440(12)00811-5. doi: 10.1016/j.ajpath.2012.10.017.5.A study of UbCH10 expression and its association with recurrence of meningiomas.Jiang L, Wang T, Bao Y, Qian J, Wu XJ, Hu GH, Lu YC.J Surg Oncol. 2012 Sep 1;106(3):327-31. doi: 10.1002/jso.22141. Epub 2011 Nov 17.6.Association of clinicopathological features with UbCH10 expression in colorectal cancer.Chen S, Chen Y, Hu C, Jing H, Cao Y, Liu X.J Cancer Res Clin Oncol. 2009 Sep 25. [Epub ahead of print]7.Expression of ubiquitin-conjugating enzyme E2C/UbCH10 in astrocytic tumors.Jiang L, Huang CG, Lu YC, Luo C, Hu GH, Liu HM, Chen JX, Han HX.Brain Res. 2008 Mar 27;1201:161-6. Epub 2008 Jan 26.