

**TYR Antibody (monoclonal) (M01)**

Mouse monoclonal antibody raised against a full length recombinant TYR.

Catalog # AT4426a

**Specification**

---

**TYR Antibody (monoclonal) (M01) - Product Information**

Application	IF, WB, IHC
Primary Accession	<a href="#">P14679</a>
Other Accession	<a href="#">BC027179</a>
Reactivity	Human
Host	Mouse
Clonality	Monoclonal
Isotype	IgG1 kappa
Calculated MW	60393

**TYR Antibody (monoclonal) (M01) - Additional Information****Gene ID** 7299**Other Names**

Tyrosinase, LB24-AB, Monophenol monooxygenase, SK29-AB, Tumor rejection antigen AB, TYR

**Target/Specificity**

TYR (AAH27179.1, 1 a.a. ~ 377 a.a) full-length recombinant protein with GST tag. MW of the GST tag alone is 26 KDa.

**Dilution**

WB~~1:500~1000

**Format**

Clear, colorless solution in phosphate buffered saline, pH 7.2 .

**Storage**

Store at -20°C or lower. Aliquot to avoid repeated freezing and thawing.

**Precautions**

TYR Antibody (monoclonal) (M01) is for research use only and not for use in diagnostic or therapeutic procedures.

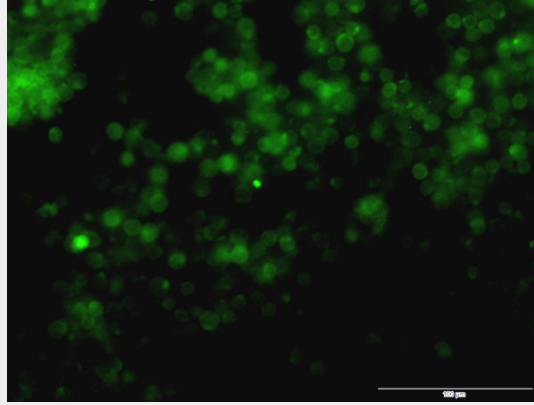
**TYR Antibody (monoclonal) (M01) - Protocols**

Provided below are standard protocols that you may find useful for product applications.

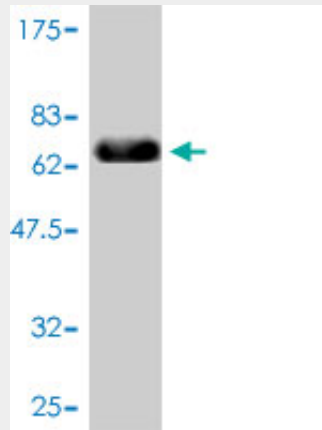
- [Western Blot](#)
- [Blocking Peptides](#)
- [Dot Blot](#)
- [Immunohistochemistry](#)

- [Immunofluorescence](#)
- [Immunoprecipitation](#)
- [Flow Cytometry](#)
- [Cell Culture](#)

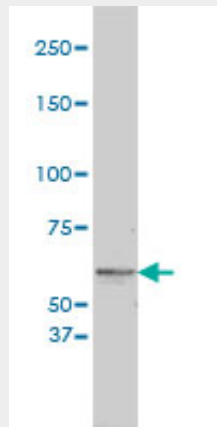
### TYR Antibody (monoclonal) (M01) - Images



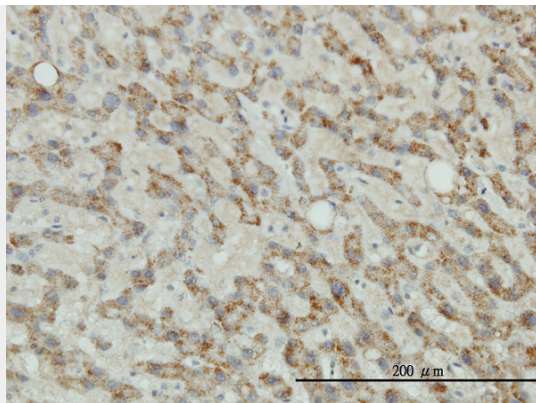
Immunofluorescence of monoclonal antibody to TYR on Jurkat cell . [antibody concentration 10 ug/ml]



Antibody Reactive Against Recombinant Protein. Western Blot detection against Immunogen (67.21 KDa) .



TYR monoclonal antibody (M01), clone 2A2-F4 Western Blot analysis of TYR expression in A-431 ( Cat # AT4426a )



Immunoperoxidase of monoclonal antibody to TYR on formalin-fixed paraffin-embedded human liver tissue. [antibody concentration 3 ug/ml]

**TYR Antibody (monoclonal) (M01) - Citations**

- [Syntenin regulates melanogenesis via the p38 MAPK pathway](#)