

**TXN Antibody (monoclonal) (M04)**  
**Mouse monoclonal antibody raised against a partial recombinant TXN.**  
**Catalog # AT4415a**

**Specification**

---

**TXN Antibody (monoclonal) (M04) - Product Information**

Application	IF, WB, E
Primary Accession	<a href="#">P10599</a>
Other Accession	<a href="#">BC003377</a>
Reactivity	Human
Host	mouse
Clonality	Monoclonal
Isotype	IgG1 Kappa
Calculated MW	11737

**TXN Antibody (monoclonal) (M04) - Additional Information**

**Gene ID** 7295

**Other Names**

Thioredoxin, Trx, ATL-derived factor, ADF, Surface-associated sulphhydryl protein, SASP, TXN, TRDX, TRX, TRX1

**Target/Specificity**

TXN (AAH03377, 1 a.a. ~ 105 a.a) partial recombinant protein with GST tag. MW of the GST tag alone is 26 KDa.

**Dilution**

WB~~1:500~1000

**Format**

Clear, colorless solution in phosphate buffered saline, pH 7.2 .

**Storage**

Store at -20°C or lower. Aliquot to avoid repeated freezing and thawing.

**Precautions**

TXN Antibody (monoclonal) (M04) is for research use only and not for use in diagnostic or therapeutic procedures.

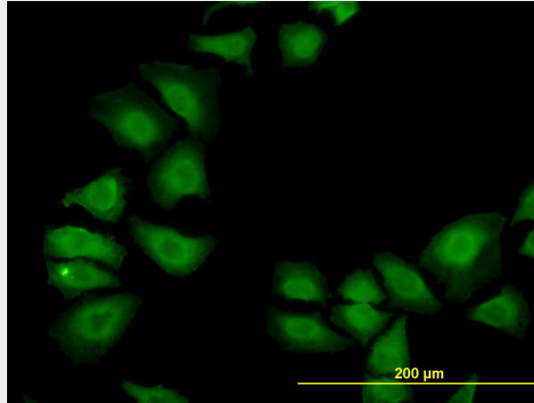
**TXN Antibody (monoclonal) (M04) - Protocols**

Provided below are standard protocols that you may find useful for product applications.

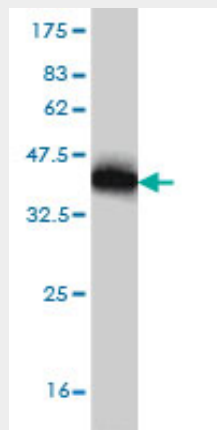
- [Western Blot](#)
- [Blocking Peptides](#)
- [Dot Blot](#)

- [Immunohistochemistry](#)
- [Immunofluorescence](#)
- [Immunoprecipitation](#)
- [Flow Cytometry](#)
- [Cell Culture](#)

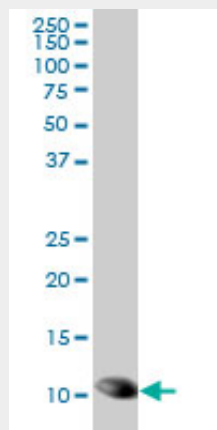
### TXN Antibody (monoclonal) (M04) - Images



Immunofluorescence of monoclonal antibody to TXN on HeLa cell. [antibody concentration 10 ug/ml]

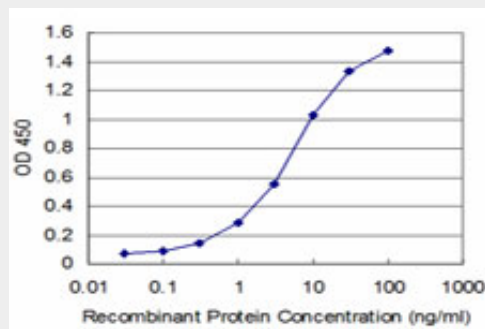


Antibody Reactive Against Recombinant Protein. Western Blot detection against Immunogen (37.29 KDa) .



TXN monoclonal antibody (M04), clone 6C10 Western Blot analysis of TXN expression in HeLa (

(Cat # AT4415a )



Detection limit for recombinant GST tagged TXN is approximately 0.3ng/ml as a capture antibody.

### **TXN Antibody (monoclonal) (M04) - Background**

Thioredoxin is a 12-kD oxidoreductase enzyme containing a dithiol-disulfide active site. It is ubiquitous and found in many organisms from plants and bacteria to mammals. Multiple in vitro substrates for thioredoxin have been identified, including ribonuclease, choriogonadotropins, coagulation factors, glucocorticoid receptor, and insulin. Reduction of insulin is classically used as an activity test.

### **TXN Antibody (monoclonal) (M04) - References**

Variation at the NFATC2 Locus Increases the Risk of Thiazolinedione-Induced Edema in the Diabetes REduction Assessment with ramipril and rosiglitazone Medication (DREAM) Study. Bailey SD, et al. Diabetes Care, 2010 Jul 13. PMID 20628086. Thioredoxin-1 phosphorylated at T100 is needed for its anti-apoptotic activity in HepG2 cancer cells. Chen X, et al. Life Sci, 2010 Aug 14. PMID 20619274. Mammalian thioredoxin reductase 1: roles in redox homeostasis and characterization of cellular targets. Turanov AA, et al. Biochem J, 2010 Sep 1. PMID 20536427. Common polymorphisms in ITGA2, PON1 and THBS2 are associated with coronary atherosclerosis in a candidate gene association study of the Chinese Han population. Wang Y, et al. J Hum Genet, 2010 Aug. PMID 20485444. Serum C-reactive protein and thioredoxin levels in subjects with mildly reduced glomerular filtration rate. Tsuchikura S, et al. BMC Nephrol, 2010 Apr 27. PMID 20423474.