

TWIST1 Antibody (monoclonal) (M01)

Mouse monoclonal antibody raised against a partial recombinant TWIST1.

Catalog # AT4410a

Specification

TWIST1 Antibody (monoclonal) (M01) - Product Information

Application	IP, WB, E
Primary Accession	Q15672
Other Accession	NM_000474
Reactivity	Human, Rat
Host	Mouse
Clonality	Monoclonal
Isotype	IgG1 Kappa
Calculated MW	20954

TWIST1 Antibody (monoclonal) (M01) - Additional Information

Gene ID 7291

Other Names

Twist-related protein 1, Class A basic helix-loop-helix protein 38, bHLHa38, H-twist, TWIST1, BHLHA38, TWIST

Target/Specificity

TWIST1 (NP_000465, 100 a.a. ~ 202 a.a) partial recombinant protein with GST tag. MW of the GST tag alone is 26 KDa.

Dilution

WB~~1:500~1000

Format

Clear, colorless solution in phosphate buffered saline, pH 7.2 .

Storage

Store at -20°C or lower. Aliquot to avoid repeated freezing and thawing.

Precautions

TWIST1 Antibody (monoclonal) (M01) is for research use only and not for use in diagnostic or therapeutic procedures.

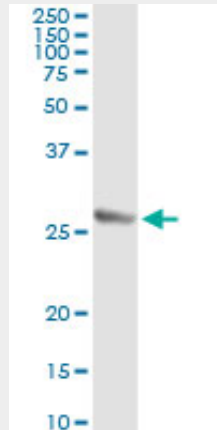
TWIST1 Antibody (monoclonal) (M01) - Protocols

Provided below are standard protocols that you may find useful for product applications.

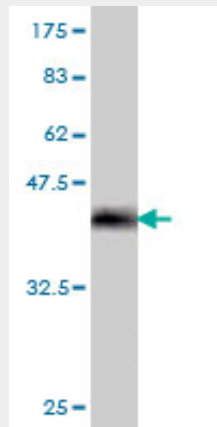
- [Western Blot](#)
- [Blocking Peptides](#)
- [Dot Blot](#)

- [Immunohistochemistry](#)
- [Immunofluorescence](#)
- [Immunoprecipitation](#)
- [Flow Cytometry](#)
- [Cell Culture](#)

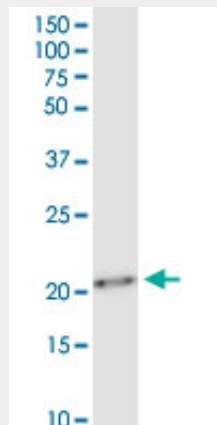
TWIST1 Antibody (monoclonal) (M01) - Images



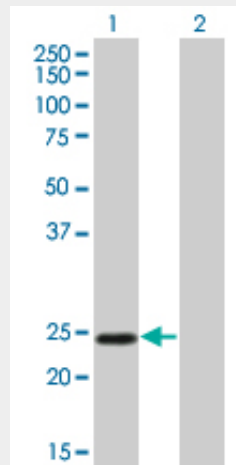
Immunoprecipitation of TWIST1 transfected lysate using anti-TWIST1 monoclonal antibody and Protein A Magnetic Bead ([U0007](#)), and immunoblotted with TWIST1 MaxPab rabbit polyclonal antibody.



Antibody Reactive Against Recombinant Protein. Western Blot detection against Immunogen (37.07 KDa) .

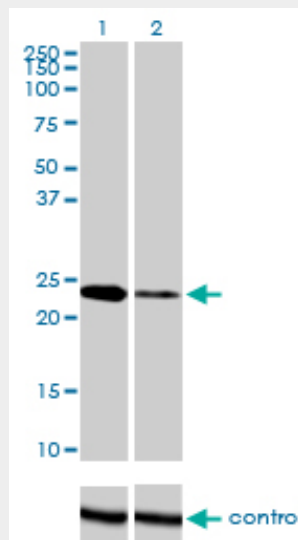


TWIST1 monoclonal antibody (M01), clone 3E11. Western Blot analysis of TWIST1 expression in rat brain.



Western Blot analysis of TWIST1 expression in transfected 293T cell line by TWIST1 monoclonal antibody (M01), clone 3E11.

Lane 1: TWIST1 transfected lysate(21 KDa).
 Lane 2: Non-transfected lysate.



Detection limit for recombinant GST tagged TWIST1 is approximately 3ng/ml as a capture antibody.

TWIST1 Antibody (monoclonal) (M01) - Background

Basic helix-loop-helix (bHLH) transcription factors have been implicated in cell lineage determination and differentiation. The protein encoded by this gene is a bHLH transcription factor and shares similarity with another bHLH transcription factor, Dermo1. The strongest expression of this mRNA is in placental tissue; in adults, mesodermally derived tissues express this mRNA preferentially. Mutations in this gene have been found in patients with Saethre-Chotzen syndrome.

TWIST1 Antibody (monoclonal) (M01) - References

1.Cellular migration and invasion uncoupled: Increased migration is not an inexorable consequence of EMT.Schaeffer D, Somarelli JA, Hanna G, Palmer GM, Garcia-Blanco MAMol Cell Biol. 2014 Jul 7.

pii: MCB.00694-14.2.EMT and induction of miR-21 mediate metastasis development in Trp53-deficient tumours. Bornachea O, Santos M, Martinez-Cruz AB, Garcia-Escudero R, Duenas M, Costa C, Segrelles C, Lorz C, Buitrago A, Saiz-Ladera C, Agirre X, Grande T, Paradela B, Maraver A, Ariza JM, Prosper F, Serrano M, Sanchez-Céspedes M, Paramio JM. *Sci Rep.* 2012;2:434. Epub 2012 May 31. 3. Conversion of Helicobacter pylori CagA from senescence inducer to oncogenic driver through polarity-dependent regulation of p21. Saito Y, Murata-Kamiya N, Hirayama T, Ohba Y, Hatakeyama M. *J Exp Med.* 2010 Sep 27;207(10):2157-74. Epub 2010 Sep 20.