

TULP2 Antibody (monoclonal) (M03)

Mouse monoclonal antibody raised against a partial recombinant TULP2.

Catalog # AT4409a

Specification

TULP2 Antibody (monoclonal) (M03) - Product Information

Application	IF, WB
Primary Accession	O00295
Other Accession	NM_003323
Reactivity	Human, Mouse, Rat
Host	mouse
Clonality	Monoclonal
Isotype	IgG2a Kappa
Calculated MW	58664

TULP2 Antibody (monoclonal) (M03) - Additional Information

Gene ID 7288

Other Names

Tubby-related protein 2, Cancer/testis antigen 65, CT65, Tubby-like protein 2, TULP2, TUBL2

Target/Specificity

TULP2 (NP_003314, 141 a.a. ~ 250 a.a) partial recombinant protein with GST tag. MW of the GST tag alone is 26 KDa.

Dilution

WB ~ 1:500 ~ 1000

Format

Clear, colorless solution in phosphate buffered saline, pH 7.2 .

Storage

Store at -20°C or lower. Aliquot to avoid repeated freezing and thawing.

Precautions

TULP2 Antibody (monoclonal) (M03) is for research use only and not for use in diagnostic or therapeutic procedures.

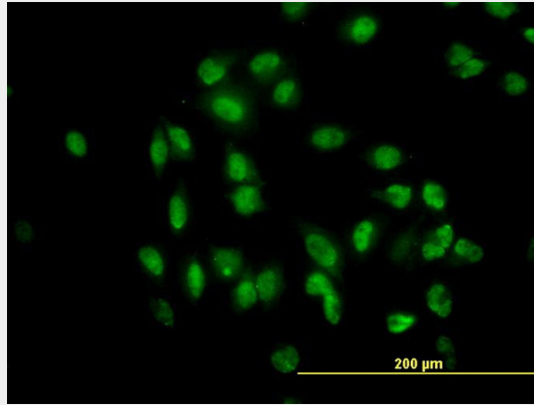
TULP2 Antibody (monoclonal) (M03) - Protocols

Provided below are standard protocols that you may find useful for product applications.

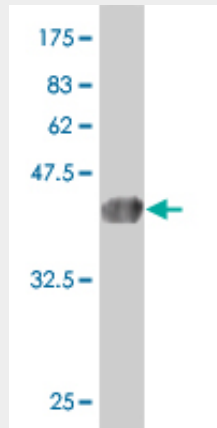
- [Western Blot](#)
- [Blocking Peptides](#)
- [Dot Blot](#)
- [Immunohistochemistry](#)

- [Immunofluorescence](#)
- [Immunoprecipitation](#)
- [Flow Cytometry](#)
- [Cell Culture](#)

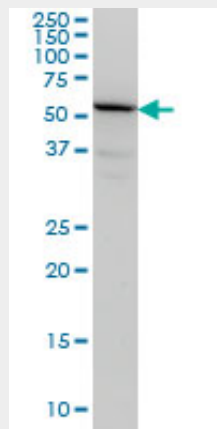
TULP2 Antibody (monoclonal) (M03) - Images



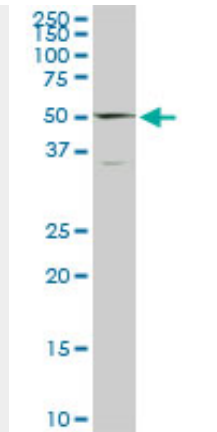
Immunofluorescence of monoclonal antibody to TULP2 on HeLa cell. [antibody concentration 10 ug/ml]



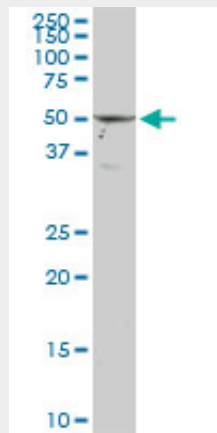
Antibody Reactive Against Recombinant Protein. Western Blot detection against Immunogen (37.84 KDa) .



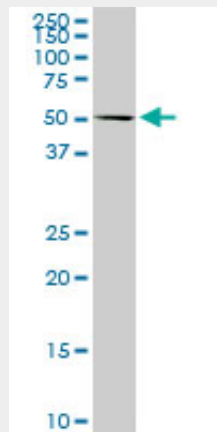
TULP2 monoclonal antibody (M03), clone 2B5 Western Blot analysis of TULP2 expression in HeLa (Cat # AT4409a)



TULP2 monoclonal antibody (M03), clone 2B5. Western Blot analysis of TULP2 expression in PC-12 (Cat # AT4409a)



TULP2 monoclonal antibody (M03), clone 2B5. Western Blot analysis of TULP2 expression in Raw 264.7 (Cat # AT4409a)



TULP2 monoclonal antibody (M03), clone 2B5. Western Blot analysis of TULP2 expression in NIH/3T3 (Cat # AT4409a)

TULP2 Antibody (monoclonal) (M03) - Background

TULP2 is a member of a family of tubby-like genes (TULPs) that encode proteins of unknown function. Members of this family have been identified in plants, vertebrates, and invertebrates. The TULP proteins share a conserved C-terminal region of approximately 200 amino acid residues.

TULP2 Antibody (monoclonal) (M03) - References

Towards a proteome-scale map of the human protein-protein interaction network. Rual JF, et al. Nature, 2005 Oct 20. PMID 16189514. Tubby proteins: the plot thickens. Carroll K, et al. Nat Rev Mol Cell Biol, 2004 Jan. PMID 14708010. Generation and initial analysis of more than 15,000 full-length human and mouse cDNA sequences. Strausberg RL, et al. Proc Natl Acad Sci U S A, 2002 Dec 24. PMID 12477932. Implication of tubby proteins as transcription factors by structure-based functional analysis. Boggon TJ, et al. Science, 1999 Dec 10. PMID 10591637. Molecular characterization of TUB, TULP1, and TULP2, members of the novel tubby gene family and their possible relation to ocular diseases. North MA, et al. Proc Natl Acad Sci U S A, 1997 Apr 1. PMID 9096357.