

## **TUBB2A Antibody (monoclonal) (M03)**

Mouse monoclonal antibody raised against a full-length recombinant TUBB2A.

Catalog # AT4406a

### **Specification**

---

#### **TUBB2A Antibody (monoclonal) (M03) - Product Information**

Application	IF, WB, IHC
Primary Accession	<a href="#">O13885</a>
Other Accession	<a href="#">BC001194</a>
Reactivity	Human, Mouse, Rat
Host	mouse
Clonality	Monoclonal
Isotype	IgG2a Kappa
Calculated MW	49907

#### **TUBB2A Antibody (monoclonal) (M03) - Additional Information**

**Gene ID** 7280

##### **Other Names**

Tubulin beta-2A chain, Tubulin beta class IIa, TUBB2A, TUBB2

##### **Target/Specificity**

TUBB2A (AAH01194, 1 a.a. ~ 445 a.a) full-length recombinant protein with GST tag. MW of the GST tag alone is 26 KDa.

##### **Dilution**

WB~~1:500~1000

##### **Format**

Clear, colorless solution in phosphate buffered saline, pH 7.2 .

##### **Storage**

Store at -20°C or lower. Aliquot to avoid repeated freezing and thawing.

##### **Precautions**

TUBB2A Antibody (monoclonal) (M03) is for research use only and not for use in diagnostic or therapeutic procedures.

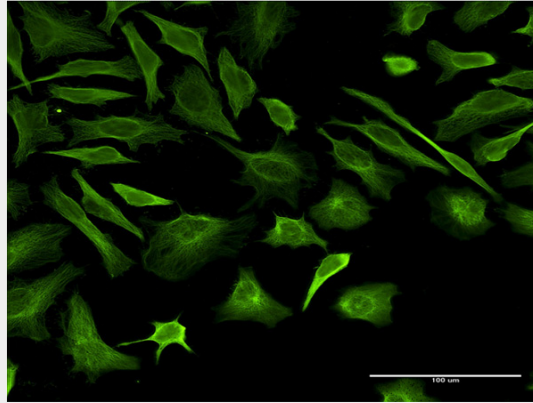
#### **TUBB2A Antibody (monoclonal) (M03) - Protocols**

Provided below are standard protocols that you may find useful for product applications.

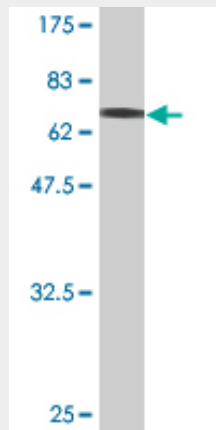
- [Western Blot](#)
- [Blocking Peptides](#)
- [Dot Blot](#)
- [Immunohistochemistry](#)

- [Immunofluorescence](#)
- [Immunoprecipitation](#)
- [Flow Cytometry](#)
- [Cell Culture](#)

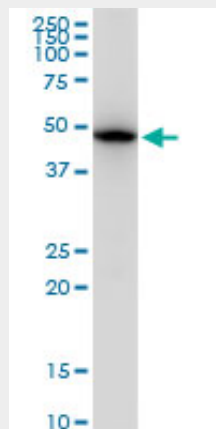
### TUBB2A Antibody (monoclonal) (M03) - Images



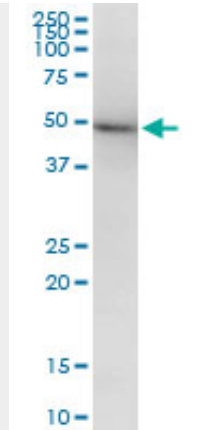
Immunofluorescence of monoclonal antibody to TUBB2A on HeLa cell . [antibody concentration 10 ug/ml]



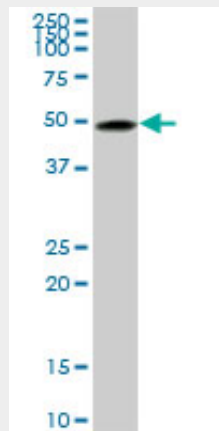
Antibody Reactive Against Recombinant Protein. Western Blot detection against Immunogen (74.47 KDa) .



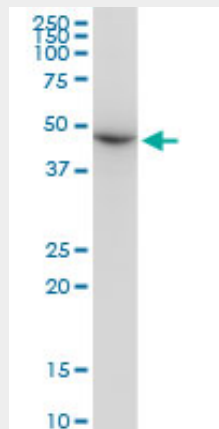
TUBB2A monoclonal antibody (M03), clone 2B2. Western Blot analysis of TUBB2A expression in PC-12((Cat # AT4406a )



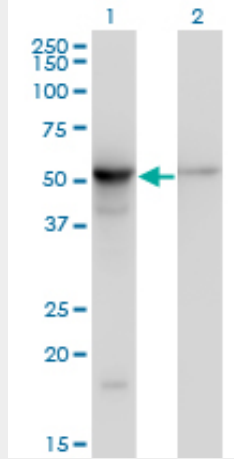
TUBB2A monoclonal antibody (M03), clone 2B2. Western Blot analysis of TUBB2A expression in Raw 264.7((Cat # AT4406a )



TUBB2A monoclonal antibody (M03), clone 2B2. Western Blot analysis of TUBB2A expression in Jurkat ( (Cat # AT4406a )



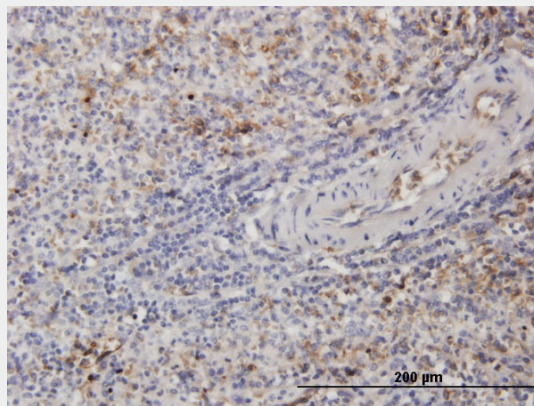
TUBB2A monoclonal antibody (M03), clone 2B2. Western Blot analysis of TUBB2A expression in NIH/3T3((Cat # AT4406a )



Western Blot analysis of TUBB2A expression in transfected 293T cell line by TUBB2A monoclonal antibody (M03), clone 2B2.

Lane 1: TUBB2A transfected lysate(49.9 KDa).

Lane 2: Non-transfected lysate.



Immunoperoxidase of monoclonal antibody to TUBB2A on formalin-fixed paraffin-embedded human spleen. [antibody concentration 1.5 ug/ml]