

TUBA6 Antibody (monoclonal) (M04)

Mouse monoclonal antibody raised against a full length recombinant TUBA6.

Catalog # AT4402a

Specification

TUBA6 Antibody (monoclonal) (M04) - Product Information

Application	IF, WB, E
Primary Accession	O9BOE3
Other Accession	BC004949
Reactivity	Human
Host	mouse
Clonality	Monoclonal
Isotype	IgG1 Kappa
Calculated MW	49895

TUBA6 Antibody (monoclonal) (M04) - Additional Information**Gene ID** 84790**Other Names**

Tubulin alpha-1C chain, Alpha-tubulin 6, Tubulin alpha-6 chain, TUBA1C, TUBA6

Target/Specificity

TUBA6 (AAH04949.1, 1 a.a. ~ 449 a.a) full-length recombinant protein with GST tag. MW of the GST tag alone is 26 KDa.

Dilution

WB~~1:500~1000

Format

Clear, colorless solution in phosphate buffered saline, pH 7.2 .

Storage

Store at -20°C or lower. Aliquot to avoid repeated freezing and thawing.

Precautions

TUBA6 Antibody (monoclonal) (M04) is for research use only and not for use in diagnostic or therapeutic procedures.

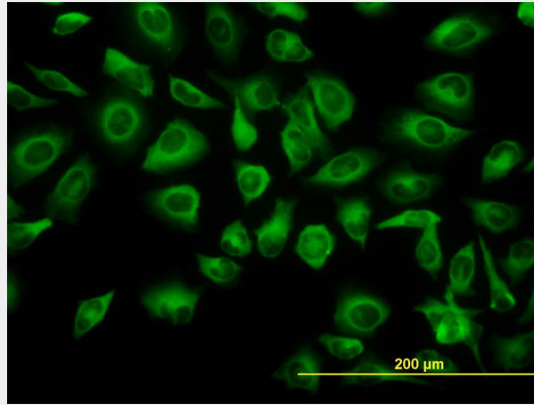
TUBA6 Antibody (monoclonal) (M04) - Protocols

Provided below are standard protocols that you may find useful for product applications.

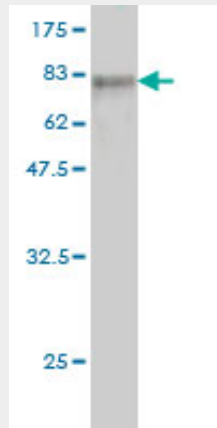
- [Western Blot](#)
- [Blocking Peptides](#)
- [Dot Blot](#)
- [Immunohistochemistry](#)

- [Immunofluorescence](#)
- [Immunoprecipitation](#)
- [Flow Cytometry](#)
- [Cell Culture](#)

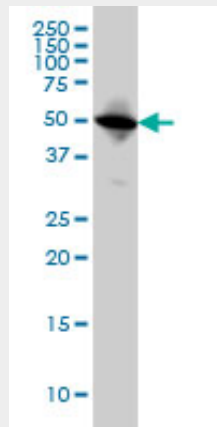
TUBA6 Antibody (monoclonal) (M04) - Images



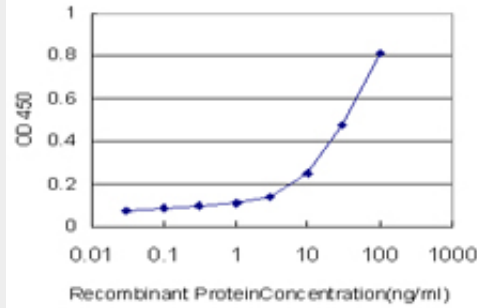
Immunofluorescence of monoclonal antibody to TUBA6 on HeLa cell. [antibody concentration 10 ug/ml]



Antibody Reactive Against Recombinant Protein. Western Blot detection against Immunogen (75.13 KDa) .



TUBA6 monoclonal antibody (M04), clone S11 Western Blot analysis of TUBA6 expression in HeLa ((Cat # AT4402a)



Detection limit for recombinant GST tagged TUBA6 is approximately 3ng/ml as a capture antibody.

TUBA6 Antibody (monoclonal) (M04) - References

HDM2-binding partners: interaction with translation elongation factor EF1alpha. Frum R, et al. J Proteome Res, 2007 Apr. PMID 17373842. Global, in vivo, and site-specific phosphorylation dynamics in signaling networks. Olsen JV, et al. Cell, 2006 Nov 3. PMID 17081983. Inhibitory effect of HIV-1 Tat protein on the sodium-D-glucose symporter of human intestinal epithelial cells. Canani RB, et al. AIDS, 2006 Jan 2. PMID 16327313. Proteomic analysis of SUMO4 substrates in HEK293 cells under serum starvation-induced stress. Guo D, et al. Biochem Biophys Res Commun, 2005 Dec 2. PMID 16236267. Histone deacetylase 6 regulates human immunodeficiency virus type 1 infection. Valenzuela-Fernandez A, et al. Mol Biol Cell, 2005 Nov. PMID 16148047.