

**TUBA6 Antibody (monoclonal) (M01)**

Mouse monoclonal antibody raised against a full length recombinant TUBA6.

Catalog # AT4401a

**Specification**

---

**TUBA6 Antibody (monoclonal) (M01) - Product Information**

Application	IF, WB
Primary Accession	<a href="#">O9BOE3</a>
Other Accession	<a href="#">BC004949</a>
Reactivity	Human
Host	mouse
Clonality	Monoclonal
Isotype	IgG1 kappa
Calculated MW	49895

**TUBA6 Antibody (monoclonal) (M01) - Additional Information**

Gene ID 84790

**Other Names**

Tubulin alpha-1C chain, Alpha-tubulin 6, Tubulin alpha-6 chain, TUBA1C, TUBA6

**Target/Specificity**

TUBA6 (AAH04949.1, 1 a.a. ~ 449 a.a) full-length recombinant protein with GST tag. MW of the GST tag alone is 26 KDa.

**Dilution**

WB~~1:500~1000

**Format**

Clear, colorless solution in phosphate buffered saline, pH 7.2 .

**Storage**

Store at -20°C or lower. Aliquot to avoid repeated freezing and thawing.

**Precautions**

TUBA6 Antibody (monoclonal) (M01) is for research use only and not for use in diagnostic or therapeutic procedures.

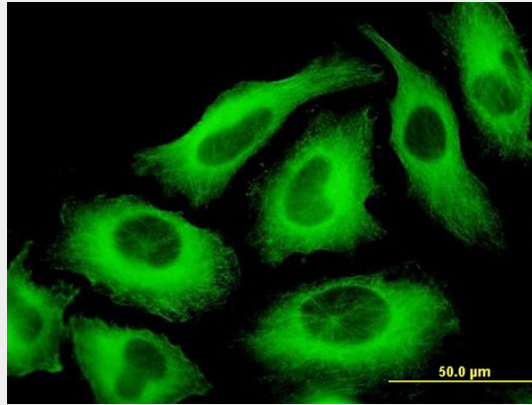
**TUBA6 Antibody (monoclonal) (M01) - Protocols**

Provided below are standard protocols that you may find useful for product applications.

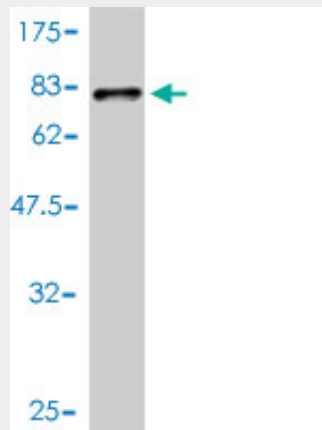
- [Western Blot](#)
- [Blocking Peptides](#)
- [Dot Blot](#)
- [Immunohistochemistry](#)

- [Immunofluorescence](#)
- [Immunoprecipitation](#)
- [Flow Cytometry](#)
- [Cell Culture](#)

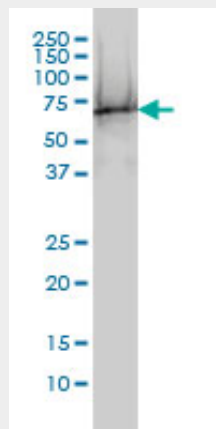
### TUBA6 Antibody (monoclonal) (M01) - Images



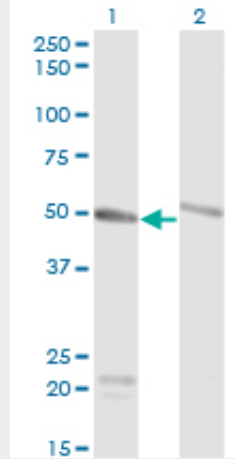
Immunofluorescence of monoclonal antibody to TUBA6 on HeLa cell . [antibody concentration 10 ug/ml]



Antibody Reactive Against Recombinant Protein. Western Blot detection against Immunogen (75.13 KDa) .



TUBA6 monoclonal antibody (M01), clone 1D2-H5 Western Blot analysis of TUBA6 expression in A-431 ( (Cat # AT4401a )



Western Blot analysis of TUBA1C expression in transfected 293T cell line by TUBA6 monoclonal antibody (M01), clone 1D2-H5.

Lane 1: TUBA1C transfected lysate (Predicted MW: 49.9 KDa).

Lane 2: Non-transfected lysate.

#### **TUBA6 Antibody (monoclonal) (M01) - References**

HDM2-binding partners: interaction with translation elongation factor EF1alpha. Frum R, et al. J Proteome Res, 2007 Apr. PMID 17373842. Global, in vivo, and site-specific phosphorylation dynamics in signaling networks. Olsen JV, et al. Cell, 2006 Nov 3. PMID 17081983. Inhibitory effect of HIV-1 Tat protein on the sodium-D-glucose symporter of human intestinal epithelial cells. Canani RB, et al. AIDS, 2006 Jan 2. PMID 16327313. Proteomic analysis of SUMO4 substrates in HEK293 cells under serum starvation-induced stress. Guo D, et al. Biochem Biophys Res Commun, 2005 Dec 2. PMID 16236267. Histone deacetylase 6 regulates human immunodeficiency virus type 1 infection. Valenzuela-Fernandez A, et al. Mol Biol Cell, 2005 Nov. PMID 16148047.