

TUBA1A Antibody Monoclonal (M06)

Mouse monoclonal antibody raised against a partial recombinant TUBA3.

Catalog # AT4400a

Specification

TUBA1A Antibody Monoclonal (M06) - Product Information

Application	IF, WB, E
Primary Accession	Q71U36
Other Accession	NM_006009
Reactivity	Human
Host	mouse
Clonality	Monoclonal
Isotype	IgG2a Kappa
Calculated MW	50136

TUBA1A Antibody Monoclonal (M06) - Additional Information**Gene ID** 7846**Other Names**

Tubulin alpha-1A chain, Alpha-tubulin 3, Tubulin B-alpha-1, Tubulin alpha-3 chain, TUBA1A, TUBA3

Target/Specificity

TUBA3 (NP_006000, 352 a.a. ~ 451 a.a) partial recombinant protein with GST tag. MW of the GST tag alone is 26 KDa.

Dilution

WB~~1:500~1000

Format

Clear, colorless solution in phosphate buffered saline, pH 7.2 .

Storage

Store at -20°C or lower. Aliquot to avoid repeated freezing and thawing.

Precautions

TUBA1A Antibody Monoclonal (M06) is for research use only and not for use in diagnostic or therapeutic procedures.

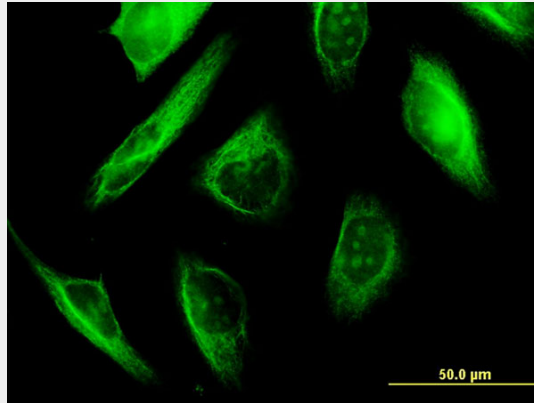
TUBA1A Antibody Monoclonal (M06) - Protocols

Provided below are standard protocols that you may find useful for product applications.

- [Western Blot](#)
- [Blocking Peptides](#)
- [Dot Blot](#)
- [Immunohistochemistry](#)

- [Immunofluorescence](#)
- [Immunoprecipitation](#)
- [Flow Cytometry](#)
- [Cell Culture](#)

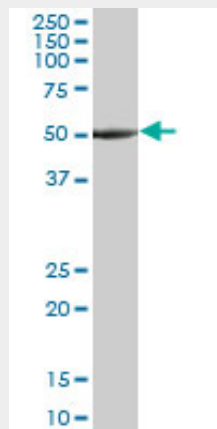
TUBA1A Antibody Monoclonal (M06) - Images



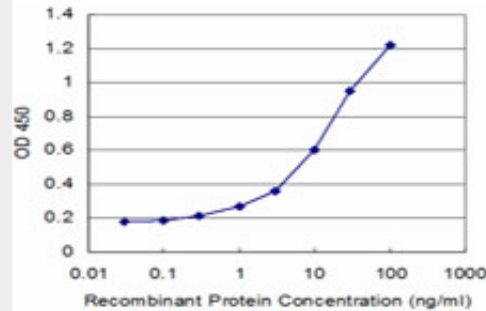
Immunofluorescence of monoclonal antibody to TUBA1A on HeLa cell . [antibody concentration 10 ug/ml]



Antibody Reactive Against Recombinant Protein. Western Blot detection against Immunogen (36.74 KDa) .



TUBA3 monoclonal antibody (M06), clone 2D2. Western Blot analysis of TUBA3 expression in HepG2 ((Cat # AT4400a)



Detection limit for recombinant GST tagged TUBA3 is approximately 0.3ng/ml as a capture antibody.

TUBA1A Antibody Monoclonal (M06) - Background

Microtubules of the eukaryotic cytoskeleton perform essential and diverse functions and are composed of a heterodimer of alpha and beta tubulins. The genes encoding these microtubule constituents belong to the tubulin superfamily, which is composed of six distinct families. Genes from the alpha, beta and gamma tubulin families are found in all eukaryotes. The alpha and beta tubulins represent the major components of microtubules, while gamma tubulin plays a critical role in the nucleation of microtubule assembly. There are multiple alpha and beta tubulin genes, which are highly conserved among species. This gene encodes alpha tubulin and is highly similar to mouse and rat Tuba1 gene. Northern blotting studies have shown that the gene expression is predominantly found in morphologically differentiated neurologic cells. This gene is one of three alpha-tubulin genes in a cluster on chromosome 12q.

TUBA1A Antibody Monoclonal (M06) - References

1. Germline CBL mutations cause developmental abnormalities and predispose to juvenile myelomonocytic leukemia. Niemeyer CM, Kang MW, Shin DH, Furlan I, Erlacher M, Bunin NJ, Bunda S, Finklestein JZ, Sakamoto KM, Gorr TA, Mehta P, Schmid I, Kropshofer G, Corbacioglu S, Lang PJ, Klein C, Schlegel PG, Heinzmann A, Schneider M, Stary J, van den Heuvel-Eibrink MM, Hasle H, Locatelli F, Sakai D, Archambeault S, Chen L, Russell RC, Sybingco SS, Ohh M, Braun BS, Flotho C, Loh ML. *Nat Genet.* 2010 Sep;42(9):794-800. Epub 2010 Aug 8.