

## TROVE2 Antibody (monoclonal) (M03)

Mouse monoclonal antibody raised against a partial recombinant TROVE2.

Catalog # AT4366a

### Specification

---

#### TROVE2 Antibody (monoclonal) (M03) - Product Information

Application	IF, WB, E
Primary Accession	<a href="#">P10155</a>
Other Accession	<a href="#">NM_004600</a>
Reactivity	Human
Host	Mouse
Clonality	Monoclonal
Isotype	IgG2a Kappa
Calculated MW	60671

#### TROVE2 Antibody (monoclonal) (M03) - Additional Information

Gene ID 6738

##### Other Names

60 kDa SS-A/Ro ribonucleoprotein, 60 kDa Ro protein, 60 kDa ribonucleoprotein Ro, RoRNP, Ro 60 kDa autoantigen, Sjogren syndrome antigen A2, Sjogren syndrome type A antigen, SS-A, TROVE domain family member 2, TROVE2, RO60, SSA2

##### Target/Specificity

TROVE2 (NP\_004591, 1 a.a. ~ 100 a.a) partial recombinant protein with GST tag. MW of the GST tag alone is 26 kDa.

##### Dilution

WB ~ 1:500 ~ 1000

##### Format

Clear, colorless solution in phosphate buffered saline, pH 7.2 .

##### Storage

Store at -20°C or lower. Aliquot to avoid repeated freezing and thawing.

##### Precautions

TROVE2 Antibody (monoclonal) (M03) is for research use only and not for use in diagnostic or therapeutic procedures.

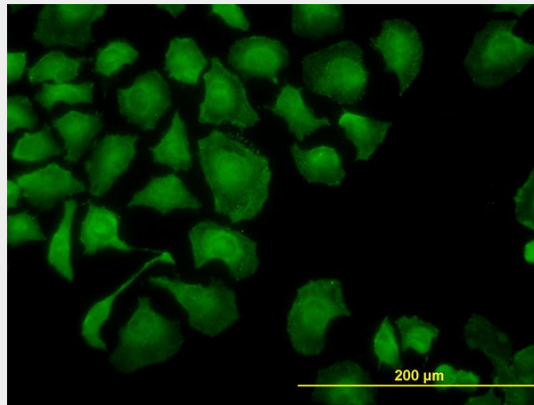
#### TROVE2 Antibody (monoclonal) (M03) - Protocols

Provided below are standard protocols that you may find useful for product applications.

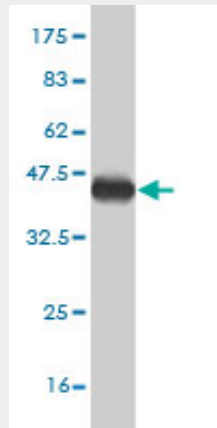
- [Western Blot](#)
- [Blocking Peptides](#)

- [Dot Blot](#)
- [Immunohistochemistry](#)
- [Immunofluorescence](#)
- [Immunoprecipitation](#)
- [Flow Cytometry](#)
- [Cell Culture](#)

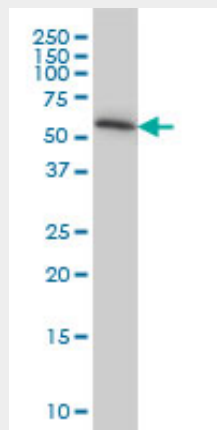
### TROVE2 Antibody (monoclonal) (M03) - Images



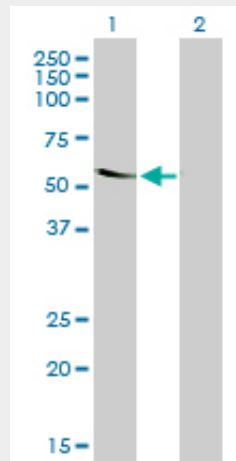
Immunofluorescence of monoclonal antibody to TROVE2 on HeLa cell. [antibody concentration 10 ug/ml]



Antibody Reactive Against Recombinant Protein. Western Blot detection against Immunogen (36.74 KDa) .

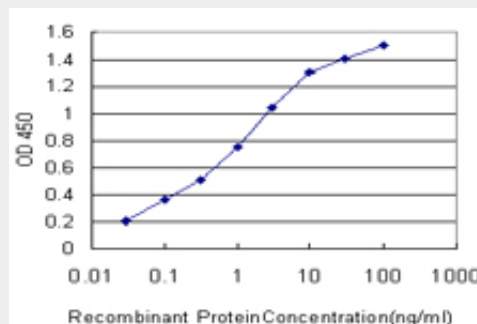


TROVE2 monoclonal antibody (M03), clone 1F2 Western Blot analysis of TROVE2 expression in HeLa ( (Cat # AT4366a )



Western Blot analysis of TROVE2 expression in transfected 293T cell line by TROVE2 monoclonal antibody (M03), clone 1F2.

Lane 1: TROVE2 transfected lysate(60.7 KDa).  
 Lane 2: Non-transfected lysate.



Detection limit for recombinant GST tagged TROVE2 is approximately 0.03ng/ml as a capture antibody.

### TROVE2 Antibody (monoclonal) (M03) - References

New genetic associations detected in a host response study to hepatitis B vaccine. Davila S, et al. *Genes Immun*, 2010 Apr. PMID 20237496. Reactivity with dichotomous determinants of Ro 60 stratifies autoantibody responses in lupus and primary Sjögren's syndrome. Reed JH, et al. *Arthritis Rheum*, 2010 May. PMID 20131295. Ro60-associated single-stranded RNA links inflammation with fetal cardiac fibrosis via ligation of TLRs: a novel pathway to autoimmune-associated heart block. Clancy RM, et al. *J Immunol*, 2010 Feb 15. PMID 20089705. Ro 60 functions as a receptor for beta(2)-glycoprotein I on apoptotic cells. Reed JH, et al. *Arthritis Rheum*, 2009 Mar. PMID 19248095. Human Y5 RNA specializes a Ro ribonucleoprotein for 5S ribosomal RNA quality control. Hogg JR, et al. *Genes Dev*, 2007 Dec 1. PMID 18056422.