

**TRIB2 Antibody (monoclonal) (M04)**

Mouse monoclonal antibody raised against a partial recombinant TRIB2.

Catalog # AT4338a

**Specification**

---

**TRIB2 Antibody (monoclonal) (M04) - Product Information**

Application	WB, IHC, E
Primary Accession	<a href="#">O92519</a>
Other Accession	<a href="#">NM_021643</a>
Reactivity	Human
Host	mouse
Clonality	Monoclonal
Isotype	IgG2b Lambda
Calculated MW	38801

**TRIB2 Antibody (monoclonal) (M04) - Additional Information**

Gene ID 28951

**Other Names**

Tribbles homolog 2, TRB-2, TRIB2 (<a href="http://www.genenames.org/cgi-bin/gene\_symbol\_report?hgnc\_id=30809" target="\_blank">HGNC:30809</a>)

**Target/Specificity**

TRIB2 (NP\_067675, 254 a.a. ~ 343 a.a) partial recombinant protein with GST tag. MW of the GST tag alone is 26 KDa.

**Dilution**

WB~~1:500~1000

**Format**

Clear, colorless solution in phosphate buffered saline, pH 7.2 .

**Storage**

Store at -20°C or lower. Aliquot to avoid repeated freezing and thawing.

**Precautions**

TRIB2 Antibody (monoclonal) (M04) is for research use only and not for use in diagnostic or therapeutic procedures.

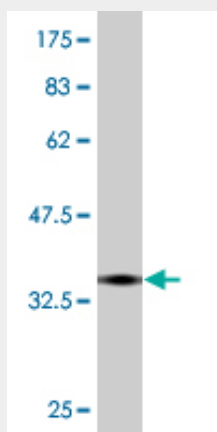
**TRIB2 Antibody (monoclonal) (M04) - Protocols**

Provided below are standard protocols that you may find useful for product applications.

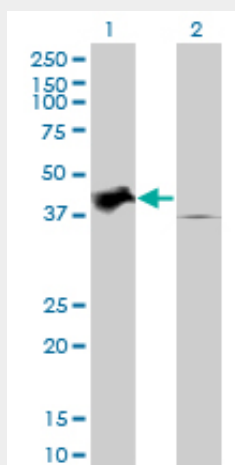
- [Western Blot](#)
- [Blocking Peptides](#)

- [Dot Blot](#)
- [Immunohistochemistry](#)
- [Immunofluorescence](#)
- [Immunoprecipitation](#)
- [Flow Cytometry](#)
- [Cell Culture](#)

### TRIB2 Antibody (monoclonal) (M04) - Images



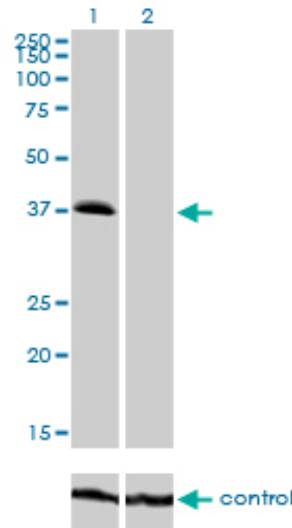
Antibody Reactive Against Recombinant Protein. Western Blot detection against Immunogen (35.64 KDa) .



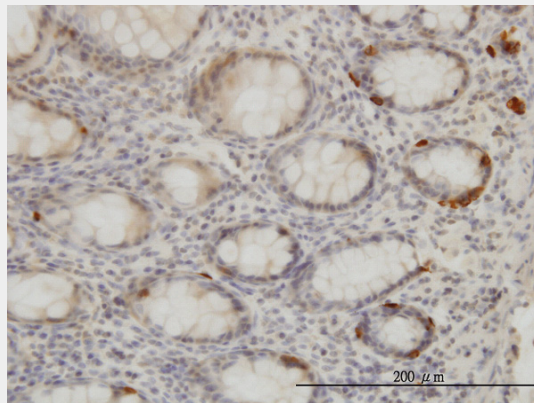
Western Blot analysis of TRIB2 expression in transfected 293T cell line by TRIB2 monoclonal antibody (M04), clone 1B1.

Lane 1: TRIB2 transfected lysate(38.8 KDa).

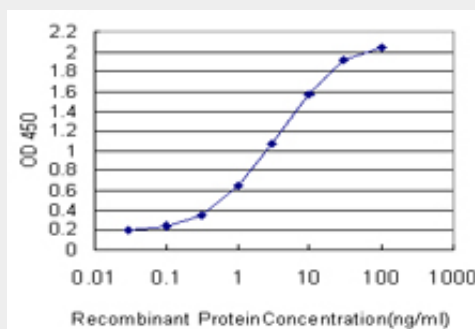
Lane 2: Non-transfected lysate.



Western blot analysis of TRIB2 over-expressed 293 cell line, cotransfected with TRIB2 Validated Chimera RNAi ( Cat # AT4338a )



Immunoperoxidase of monoclonal antibody to TRIB2 on formalin-fixed paraffin-embedded human colon. [antibody concentration 3 ug/ml]



Detection limit for recombinant GST tagged TRIB2 is approximately 0.03ng/ml as a capture antibody.

### TRIB2 Antibody (monoclonal) (M04) - Background

This gene encodes one of three members of the Tribbles family. The Tribbles members share a Trb domain, which is homologous to protein serine-threonine kinases, but lacks the active site lysine and probably lacks a catalytic function. The Tribbles proteins interact and modulate the activity of signal transduction pathways in a number of physiological and pathological processes. This Tribbles member induces apoptosis of cells mainly of the hematopoietic origin. It has been identified as a

protein up-regulated by inflammatory stimuli in myeloid (THP-1) cells, and also as an oncogene that inactivates the transcription factor C/EBPalpha (CCAAT/enhancer-binding protein alpha) and causes acute myelogenous leukemia. Alternatively spliced transcript variants have been found for this gene.

#### **TRIB2 Antibody (monoclonal) (M04) - References**

1. Ubiquitin E3 ligase SCF<sup>β</sup>-TRCP regulates TRIB2 stability in liver cancer cells. Qiao Y, Zhang Y, Wang J. *Biochem Biophys Res Commun.* 2013 Nov 5. pii: S0006-291X(13)01814-7. doi: 10.1016/j.bbrc.2013.10.123.2. Impaired phosphorylation and ubiquitination by P70 S6 kinase (P70S6K) and Smad ubiquitination regulatory factor 1 (Smurf1) promotes Tribbles homolog 2 (TRIB2) stability and carcinogenic property in liver cancer. Wang J, Zhang Y, Weng W, Qiao Y, Ma L, Xiao W, Yu Y, Pan Q, Sun F. *J Biol Chem.* 2013 Oct 2.