

TPI1 Antibody (monoclonal) (M01)

Mouse monoclonal antibody raised against a full length recombinant TPI1.

Catalog # AT4318a

Specification

TPI1 Antibody (monoclonal) (M01) - Product Information

Application	WB, E
Primary Accession	P60174
Other Accession	BC007086
Reactivity	Human
Host	mouse
Clonality	Monoclonal
Isotype	IgG1 Kappa
Calculated MW	26669

TPI1 Antibody (monoclonal) (M01) - Additional Information

Gene ID 7167

Other Names

Triosephosphate isomerase, TIM, Triose-phosphate isomerase, TPI1, TPI

Target/Specificity

TPI1 (AAH07086.1, 1 a.a. ~ 249 a.a) full-length recombinant protein with GST tag. MW of the GST tag alone is 26 KDa.

Dilution

WB~~1:500~1000

Format

Clear, colorless solution in phosphate buffered saline, pH 7.2 .

Storage

Store at -20°C or lower. Aliquot to avoid repeated freezing and thawing.

Precautions

TPI1 Antibody (monoclonal) (M01) is for research use only and not for use in diagnostic or therapeutic procedures.

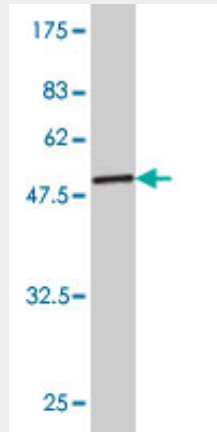
TPI1 Antibody (monoclonal) (M01) - Protocols

Provided below are standard protocols that you may find useful for product applications.

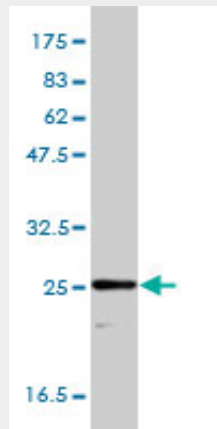
- [Western Blot](#)
- [Blocking Peptides](#)
- [Dot Blot](#)
- [Immunohistochemistry](#)

- [Immunofluorescence](#)
- [Immunoprecipitation](#)
- [Flow Cytometry](#)
- [Cell Culture](#)

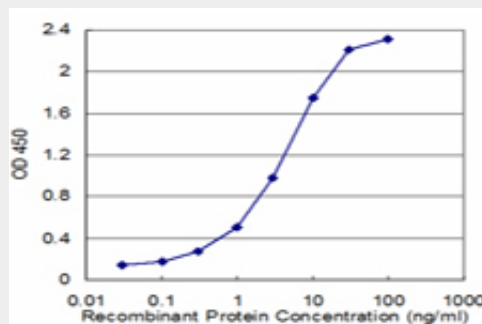
TPI1 Antibody (monoclonal) (M01) - Images



Antibody Reactive Against Recombinant Protein. Western Blot detection against Immunogen (53.13 KDa) .



TPI1 monoclonal antibody (M01), clone 1D10-2E2 Western Blot analysis of TPI1 expression in HepG2 ((Cat # AT4318a)



Detection limit for recombinant GST tagged TPI1 is approximately 0.3ng/ml as a capture antibody.

TPI1 Antibody (monoclonal) (M01) - Background

This gene encodes an enzyme, consisting of two identical proteins, which catalyzes the isomerization of glyceraldehydes 3-phosphate (G3P) and dihydroxy-acetone phosphate (DHAP) in glycolysis and gluconeogenesis. Mutations in this gene are associated with triosephosphate isomerase deficiency. Pseudogenes have been identified on chromosomes 1, 4, 6 and 7. Alternative splicing results in multiple transcript variants.

TPI1 Antibody (monoclonal) (M01) - References

1.Impact of cisplatin administration on protein expression levels in renal cell carcinoma: A proteomic analysis.Vasko R, Mueller GA, von Jaschke AK, Asif AR, Dihazi H.Eur J Pharmacol. 2011 Sep 8.2.Proteomic Analysis of Butyrate Effects and Loss of Butyrate Sensitivity in HT29 Colorectal Cancer Cells.Fung KY, Lewanowitsch T, Henderson ST, Priebe I, Hoffmann P, Lockett T, Head R, Cosgrove LJ.J Proteome Res. 2009 Mar;8(3):1220-7.3.Proteome of human T lymphocytes with treatment of cyclosporine and polysaccharopeptide: Analysis of significant proteins that manipulate T cells proliferation and immunosuppression.Lee CL, Jiang PP, Sit WH, Wan JM.Int Immunopharmacol. 2007 Oct;7(10):1311-24. Epub 2007 Jun 19.