

TOP1 Antibody (monoclonal) (M01)

Mouse monoclonal antibody raised against a partial recombinant TOP1.

Catalog # AT4304a

Specification

TOP1 Antibody (monoclonal) (M01) - Product Information

Application	WB, IHC, E
Primary Accession	P11387
Other Accession	NM_003286
Reactivity	Human
Host	Mouse
Clonality	Monoclonal
Isotype	IgG1 Kappa
Calculated MW	90726

TOP1 Antibody (monoclonal) (M01) - Additional Information**Gene ID** 7150**Other Names**

DNA topoisomerase 1, DNA topoisomerase I, TOP1

Target/Specificity

TOP1 (NP_003277, 692 a.a. ~ 765 a.a) partial recombinant protein with GST tag. MW of the GST tag alone is 26 KDa.

Dilution

WB~~1:500~1000

Format

Clear, colorless solution in phosphate buffered saline, pH 7.2 .

Storage

Store at -20°C or lower. Aliquot to avoid repeated freezing and thawing.

Precautions

TOP1 Antibody (monoclonal) (M01) is for research use only and not for use in diagnostic or therapeutic procedures.

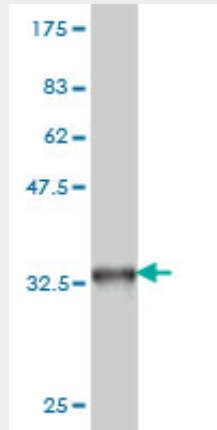
TOP1 Antibody (monoclonal) (M01) - Protocols

Provided below are standard protocols that you may find useful for product applications.

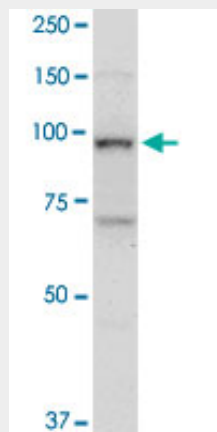
- [Western Blot](#)
- [Blocking Peptides](#)
- [Dot Blot](#)
- [Immunohistochemistry](#)

- [Immunofluorescence](#)
- [Immunoprecipitation](#)
- [Flow Cytometry](#)
- [Cell Culture](#)

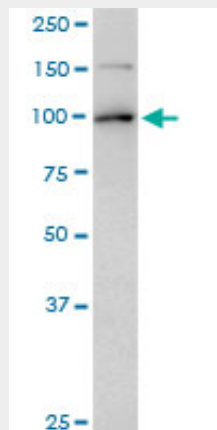
TOP1 Antibody (monoclonal) (M01) - Images



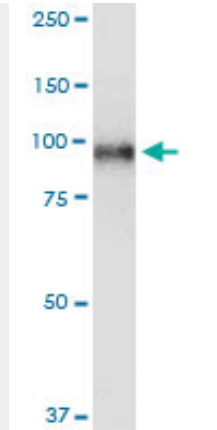
Antibody Reactive Against Recombinant Protein. Western Blot detection against Immunogen (33.88 KDa) .



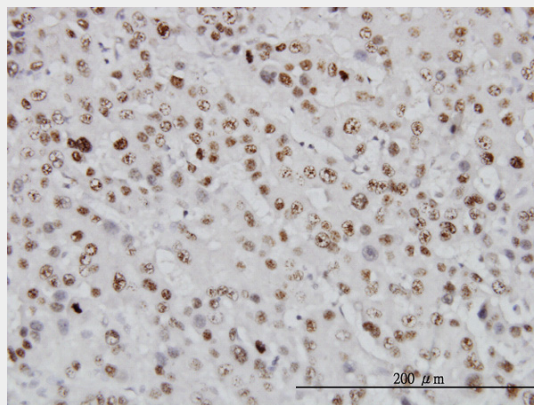
TOP1 monoclonal antibody (M01), clone 1A1. Western Blot analysis of TOP1 expression in human ovarian cancer.



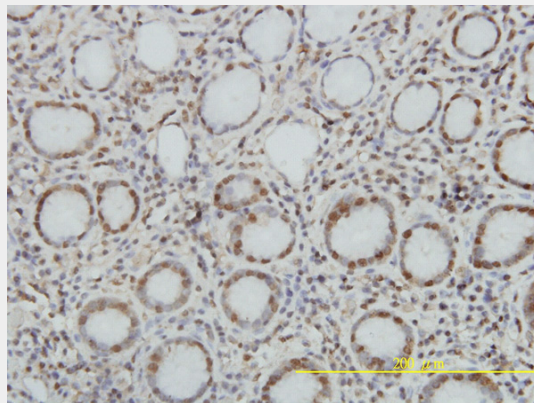
TOP1 monoclonal antibody (M01), clone 1A1. Western Blot analysis of TOP1 expression in HeLa.



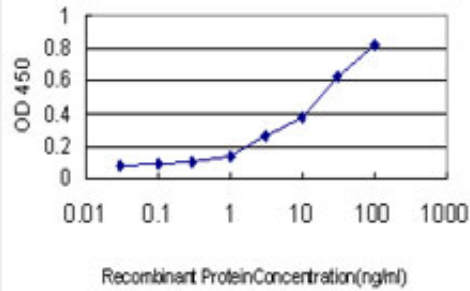
TOP1 monoclonal antibody (M01), clone 1A1. Western Blot analysis of TOP1 expression in JAR.



Immunoperoxidase of monoclonal antibody to TOP1 on formalin-fixed paraffin-embedded human hepatocellular carcinoma. [antibody concentration 3 ug/ml]



Immunoperoxidase of monoclonal antibody to TOP1 on formalin-fixed paraffin-embedded human stomach. [antibody concentration 1~10 ug/ml]



Detection limit for recombinant GST tagged TOP1 is approximately 0.3ng/ml as a capture antibody.

TOP1 Antibody (monoclonal) (M01) - Background

This gene encodes a DNA topoisomerase, an enzyme that controls and alters the topologic states of DNA during transcription. This enzyme catalyzes the transient breaking and rejoining of a single strand of DNA which allows the strands to pass through one another, thus altering the topology of DNA. This gene is localized to chromosome 20 and has pseudogenes which reside on chromosomes 1 and 22.

TOP1 Antibody (monoclonal) (M01) - References

1. AID-induced decrease in topoisomerase 1 induces DNA structural alteration and DNA cleavage for class switch recombination. Kobayashi M, Aida M, Nagaoka H, Begum NA, Kitawaki Y, Nakata M, Stanlie A, Doi T, Kato L, Okazaki IM, Shinkura R, Muramatsu M, Kinoshita K, Honjo T. Proc Natl Acad Sci U S A. 2009 Dec 29;106(52):22375-80. Epub 2009 Dec 11.