

TOMM34 Antibody (monoclonal) (M01)

Mouse monoclonal antibody raised against a full length recombinant TOMM34.

Catalog # AT4303a

Specification

TOMM34 Antibody (monoclonal) (M01) - Product Information

| | |
|-------------------|--------------------------|
| Application | IF, WB, E |
| Primary Accession | Q15785 |
| Other Accession | BC001763 |
| Reactivity | Human |
| Host | mouse |
| Clonality | Monoclonal |
| Isotype | IgG2a Kappa |
| Calculated MW | 34559 |

TOMM34 Antibody (monoclonal) (M01) - Additional Information

Gene ID 10953

Other Names

Mitochondrial import receptor subunit TOM34, hTom34, Translocase of outer membrane 34 kDa subunit, TOMM34, URCC3

Target/Specificity

TOMM34 (AAH01763, 1 a.a. ~ 309 a.a) full-length recombinant protein with GST tag. MW of the GST tag alone is 26 kDa.

Dilution

WB~~1:500~1000

Format

Clear, colorless solution in phosphate buffered saline, pH 7.2 .

Storage

Store at -20°C or lower. Aliquot to avoid repeated freezing and thawing.

Precautions

TOMM34 Antibody (monoclonal) (M01) is for research use only and not for use in diagnostic or therapeutic procedures.

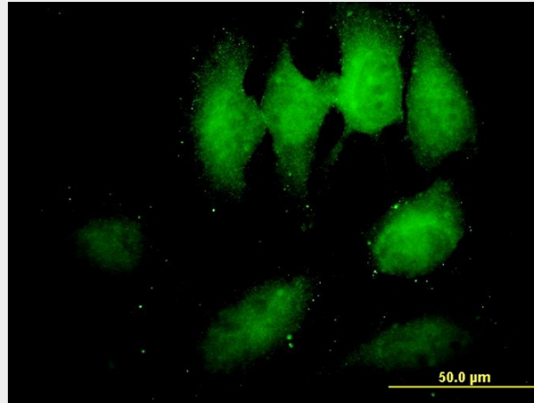
TOMM34 Antibody (monoclonal) (M01) - Protocols

Provided below are standard protocols that you may find useful for product applications.

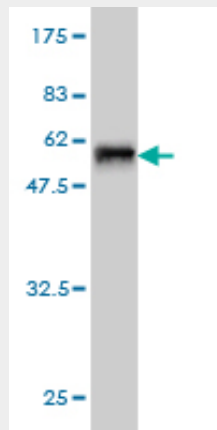
- [Western Blot](#)
- [Blocking Peptides](#)
- [Dot Blot](#)

- [Immunohistochemistry](#)
- [Immunofluorescence](#)
- [Immunoprecipitation](#)
- [Flow Cytometry](#)
- [Cell Culture](#)

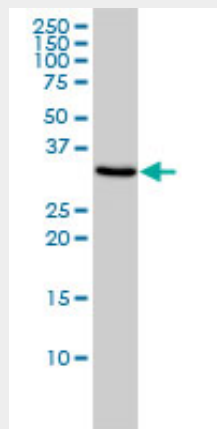
TOMM34 Antibody (monoclonal) (M01) - Images



Immunofluorescence of monoclonal antibody to TOMM34 on HeLa cell. [antibody concentration 30 ug/ml]

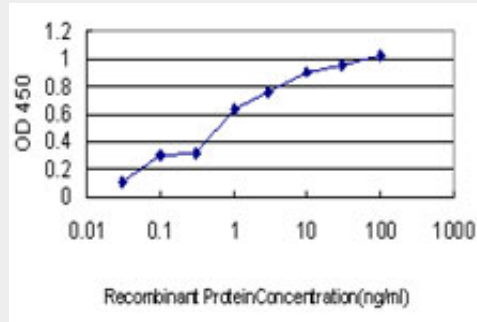


Antibody Reactive Against Recombinant Protein. Western Blot detection against Immunogen (59.73 KDa) .



TOMM34 monoclonal antibody (M01), clone 2B5 Western Blot analysis of TOMM34 expression in

Hela ((Cat # AT4303a)



Detection limit for recombinant GST tagged TOMM34 is approximately 0.03ng/ml as a capture antibody.

TOMM34 Antibody (monoclonal) (M01) - Background

The protein encoded by this gene is involved in the import of precursor proteins into mitochondria. The encoded protein has a chaperone-like activity, binding the mature portion of unfolded proteins and aiding their import into mitochondria. This protein, which is found in the cytoplasm and sometimes associated with the outer mitochondrial membrane, has a weak ATPase activity and contains 6 TPR repeats.

TOMM34 Antibody (monoclonal) (M01) - References

NRF-1 is the major transcription factor regulating the expression of the human TOMM34 gene. Blesa JR, et al. *Biochem Cell Biol*, 2008 Feb. PMID 18364745. Global, in vivo, and site-specific phosphorylation dynamics in signaling networks. Olsen JV, et al. *Cell*, 2006 Nov 3. PMID 17081983. Identification of TOMM34, which shows elevated expression in the majority of human colon cancers, as a novel drug target. Shimokawa T, et al. *Int J Oncol*, 2006 Aug. PMID 16820880. The status, quality, and expansion of the NIH full-length cDNA project: the Mammalian Gene Collection (MGC). Gerhard DS, et al. *Genome Res*, 2004 Oct. PMID 15489334. Generation and initial analysis of more than 15,000 full-length human and mouse cDNA sequences. Strausberg RL, et al. *Proc Natl Acad Sci U S A*, 2002 Dec 24. PMID 12477932.