

## **TOMM20 Antibody (monoclonal) (M01)**

Mouse monoclonal antibody raised against a full length recombinant TOMM20.

Catalog # AT4301a

### **Specification**

---

#### **TOMM20 Antibody (monoclonal) (M01) - Product Information**

Application	IF, WB, IHC, E
Primary Accession	<a href="#">Q15388</a>
Other Accession	<a href="#">BC066335</a>
Reactivity	Human, Mouse, Rat
Host	Mouse
Clonality	Monoclonal
Isotype	IgG1 Kappa
Calculated MW	16298

#### **TOMM20 Antibody (monoclonal) (M01) - Additional Information**

**Gene ID** 9804

##### **Other Names**

Mitochondrial import receptor subunit TOM20 homolog, Mitochondrial 20 kDa outer membrane protein, Outer mitochondrial membrane receptor Tom20, TOMM20, KIAA0016

##### **Target/Specificity**

TOMM20 (AAH66335, 1 a.a. ~ 145 a.a) full-length recombinant protein with GST tag. MW of the GST tag alone is 26 KDa.

##### **Dilution**

WB~~1:500~1000

##### **Format**

Clear, colorless solution in phosphate buffered saline, pH 7.2 .

##### **Storage**

Store at -20°C or lower. Aliquot to avoid repeated freezing and thawing.

##### **Precautions**

TOMM20 Antibody (monoclonal) (M01) is for research use only and not for use in diagnostic or therapeutic procedures.

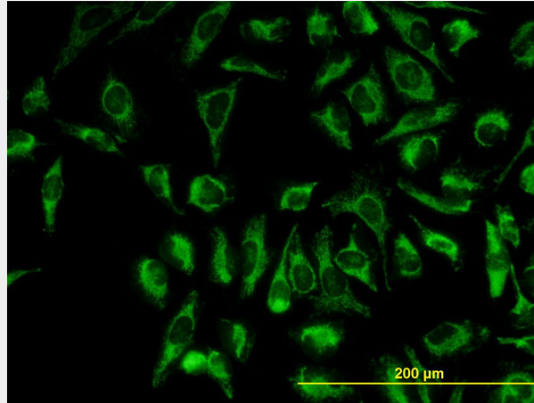
#### **TOMM20 Antibody (monoclonal) (M01) - Protocols**

Provided below are standard protocols that you may find useful for product applications.

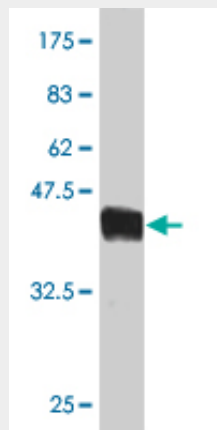
- [Western Blot](#)
- [Blocking Peptides](#)
- [Dot Blot](#)

- [Immunohistochemistry](#)
- [Immunofluorescence](#)
- [Immunoprecipitation](#)
- [Flow Cytometry](#)
- [Cell Culture](#)

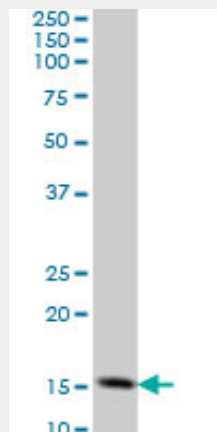
### TOMM20 Antibody (monoclonal) (M01) - Images



Immunofluorescence of monoclonal antibody to TOMM20 on HeLa cell. [antibody concentration 10 ug/ml]

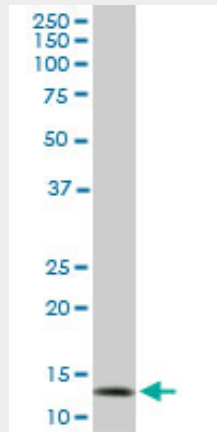


Antibody Reactive Against Recombinant Protein. Western Blot detection against Immunogen (41.69 kDa) .

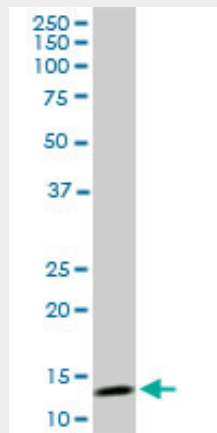


TOMM20 monoclonal antibody (M01), clone 4F3 Western Blot analysis of TOMM20 expression in

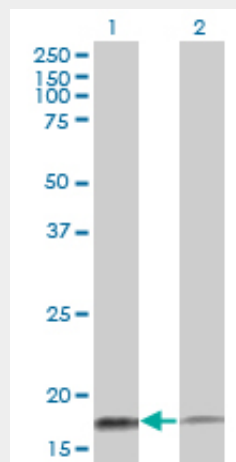
HeLa ( (Cat # AT4301a )



TOMM20 monoclonal antibody (M01), clone 4F3. Western Blot analysis of TOMM20 expression in PC-12 ( (Cat # AT4301a )



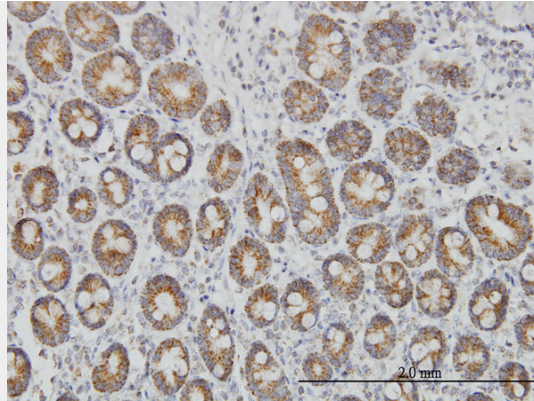
TOMM20 monoclonal antibody (M01), clone 4F3. Western Blot analysis of TOMM20 expression in NIH/3T3 ( (Cat # AT4301a )



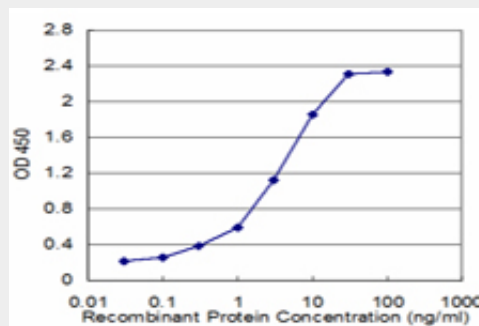
Western Blot analysis of TOMM20 expression in transfected 293T cell line by TOMM20 monoclonal antibody (M01), clone 4F3.

Lane 1: TOMM20 transfected lysate(16.3 KDa).

Lane 2: Non-transfected lysate.



Immunoperoxidase of monoclonal antibody to TOMM20 on formalin-fixed paraffin-embedded human small intestine. [antibody concentration 3 ug/ml]



Detection limit for recombinant GST tagged TOMM20 is approximately 0.1ng/ml as a capture antibody.

### **TOMM20 Antibody (monoclonal) (M01) - References**

- 1.Short RNA Molecules with High Binding Affinity to the KH Motif of A-Kinase Anchoring Protein 1 (AKAP1): Implications for the Regulation of Steroidogenesis.Grozdanov PN, Stocco DM.Mol Endocrinol. 2012 Oct 17. [Epub ahead of print]
- 2.Cellular distribution and subcellular localization of spatascin and spastizin, two proteins involved in hereditary spastic paraplegia.Murmu RP, Martin E, Rastetter A, Esteves T, Muriel MP, El Hachimi KH, Denora PS, Dauphin A, Fernandez JC, Duyckaerts C, Brice A, Darios F, Stevanin G.Mol Cell Neurosci. 2011 Apr 27. [Epub ahead of print]