

TMEM1 Antibody (monoclonal) (M02)

Mouse monoclonal antibody raised against a partial recombinant TMEM1.

Catalog # AT4264a

Specification

TMEM1 Antibody (monoclonal) (M02) - Product Information

Application	WB
Primary Accession	P48553
Other Accession	NM_003274
Reactivity	Human
Host	mouse
Clonality	Monoclonal
Isotype	IgG2a Kappa
Calculated MW	142189

TMEM1 Antibody (monoclonal) (M02) - Additional Information

Gene ID 7109

Other Names

Trafficking protein particle complex subunit 10, Epilepsy holoprosencephaly candidate 1 protein, EHOC-1, Protein GT334, Trafficking protein particle complex subunit TMEM1, Transport protein particle subunit TMEM1, TRAPP subunit TMEM1, TRAPPC10, EHOC1, TMEM1

Target/Specificity

TMEM1 (NP_003265, 1162 a.a. ~ 1257 a.a) partial recombinant protein with GST tag. MW of the GST tag alone is 26 KDa.

Dilution

WB~~1:500~1000

Format

Clear, colorless solution in phosphate buffered saline, pH 7.2 .

Storage

Store at -20°C or lower. Aliquot to avoid repeated freezing and thawing.

Precautions

TMEM1 Antibody (monoclonal) (M02) is for research use only and not for use in diagnostic or therapeutic procedures.

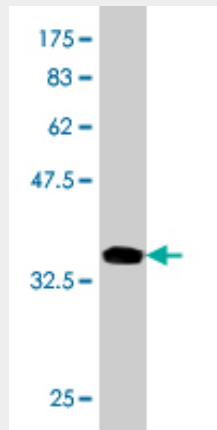
TMEM1 Antibody (monoclonal) (M02) - Protocols

Provided below are standard protocols that you may find useful for product applications.

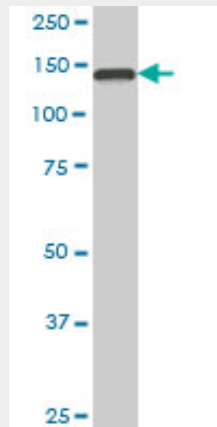
- [Western Blot](#)
- [Blocking Peptides](#)

- [Dot Blot](#)
- [Immunohistochemistry](#)
- [Immunofluorescence](#)
- [Immunoprecipitation](#)
- [Flow Cytometry](#)
- [Cell Culture](#)

TMEM1 Antibody (monoclonal) (M02) - Images



Antibody Reactive Against Recombinant Protein. Western Blot detection against Immunogen (36.3 KDa) .



TMEM1 monoclonal antibody (M02), clone 5D5. Western Blot analysis of TMEM1 expression in HeLa S3 NE ((Cat # AT4264a)

TMEM1 Antibody (monoclonal) (M02) - Background

The protein encoded by this gene is a transmembrane protein found in the cis-Golgi complex. The encoded protein is part of the multisubunit transport protein particle (TRAPP) complex and may be involved in vesicular transport from the endoplasmic reticulum to the Golgi. Mutations in this gene could be responsible for the Unverricht-Lundborg type of progressive myoclonus epilepsy, or for autoimmune polyglandular disease type 1.

TMEM1 Antibody (monoclonal) (M02) - References

L-type voltage-dependent calcium channel alpha subunit 1C is a novel candidate gene associated with secondary hyperparathyroidism: an application of haplotype-based analysis for multiple linked single nucleotide polymorphisms. Yokoyama K, et al. Nephron Clin Pract, 2010. PMID 20424473. The

status, quality, and expansion of the NIH full-length cDNA project: the Mammalian Gene Collection (MGC). Gerhard DS, et al. *Genome Res*, 2004 Oct. PMID 15489334. Large-scale characterization of HeLa cell nuclear phosphoproteins. Beausoleil SA, et al. *Proc Natl Acad Sci U S A*, 2004 Aug 17. PMID 15302935. Complete sequencing and characterization of 21,243 full-length human cDNAs. Ota T, et al. *Nat Genet*, 2004 Jan. PMID 14702039. Generation and initial analysis of more than 15,000 full-length human and mouse cDNA sequences. Strausberg RL, et al. *Proc Natl Acad Sci U S A*, 2002 Dec 24. PMID 12477932.