

**TMEM1 Antibody (monoclonal) (M01)****Mouse monoclonal antibody raised against a partial recombinant TMEM1.****Catalog # AT4263a****Specification**

---

**TMEM1 Antibody (monoclonal) (M01) - Product Information**

|                   |                           |
|-------------------|---------------------------|
| Application       | <b>WB</b>                 |
| Primary Accession | <a href="#">P48553</a>    |
| Other Accession   | <a href="#">NM_003274</a> |
| Reactivity        | <b>Human</b>              |
| Host              | <b>mouse</b>              |
| Clonality         | <b>Monoclonal</b>         |
| Isotype           | <b>IgG1 Kappa</b>         |
| Calculated MW     | <b>142189</b>             |

**TMEM1 Antibody (monoclonal) (M01) - Additional Information****Gene ID** 7109**Other Names**

Trafficking protein particle complex subunit 10, Epilepsy holoprosencephaly candidate 1 protein, EHOC-1, Protein GT334, Trafficking protein particle complex subunit TMEM1, Transport protein particle subunit TMEM1, TRAPP subunit TMEM1, TRAPPC10, EHOC1, TMEM1

**Target/Specificity**

TMEM1 (NP\_003265, 1162 a.a. ~ 1257 a.a) partial recombinant protein with GST tag. MW of the GST tag alone is 26 KDa.

**Dilution**

WB~~1:500~1000

**Format**

Clear, colorless solution in phosphate buffered saline, pH 7.2 .

**Storage**

Store at -20°C or lower. Aliquot to avoid repeated freezing and thawing.

**Precautions**

TMEM1 Antibody (monoclonal) (M01) is for research use only and not for use in diagnostic or therapeutic procedures.

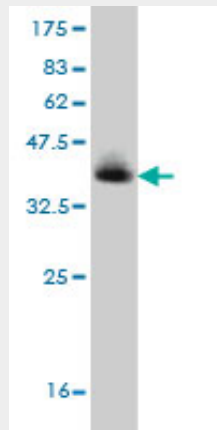
**TMEM1 Antibody (monoclonal) (M01) - Protocols**

Provided below are standard protocols that you may find useful for product applications.

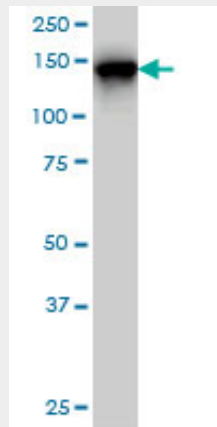
- [Western Blot](#)
- [Blocking Peptides](#)

- [Dot Blot](#)
- [Immunohistochemistry](#)
- [Immunofluorescence](#)
- [Immunoprecipitation](#)
- [Flow Cytometry](#)
- [Cell Culture](#)

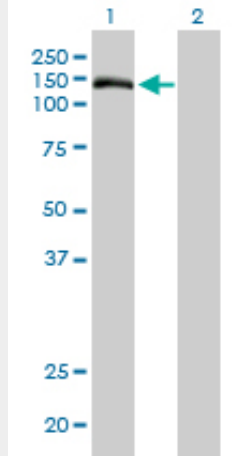
### TMEM1 Antibody (monoclonal) (M01) - Images



Antibody Reactive Against Recombinant Protein. Western Blot detection against Immunogen (36.3 KDa) .

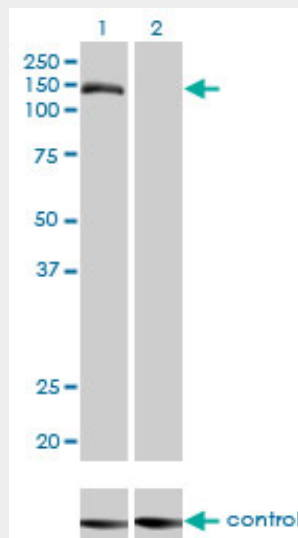


TMEM1 monoclonal antibody (M01), clone 5B4 Western Blot analysis of TMEM1 expression in HeLa S3 NE ( (Cat # AT4263a )



Western Blot analysis of TMEM1 expression in transfected 293T cell line by TMEM1 monoclonal antibody (M01), clone 5B4.

Lane 1: TMEM1 transfected lysate(142.2 KDa).  
 Lane 2: Non-transfected lysate.



Western blot analysis of TMEM1 over-expressed 293 cell line, cotransfected with TMEM1 Validated Chimera RNAi ( (Cat # AT4263a )

### TMEM1 Antibody (monoclonal) (M01) - Background

The protein encoded by this gene is a transmembrane protein found in the cis-Golgi complex. The encoded protein is part of the multisubunit transport protein particle (TRAPP) complex and may be involved in vesicular transport from the endoplasmic reticulum to the Golgi. Mutations in this gene could be responsible for the Unverricht-Lundborg type of progressive myoclonus epilepsy, or for autoimmune polyglandular disease type 1.

### TMEM1 Antibody (monoclonal) (M01) - References

1. TRAPPC9 Mediates the Interaction between p150 and COPII Vesicles at the Target Membrane. Zong M, Satoh A, Yu MK, Siu KY, Ng WY, Chan HC, Tanner JA, Yu S. PLoS One. 2012;7(1):e29995. Epub 2012 Jan 18.