

TMEFF2 Antibody (monoclonal) (M08)

Mouse monoclonal antibody raised against a partial recombinant TMEFF2.

Catalog # AT4262a

Specification

TMEFF2 Antibody (monoclonal) (M08) - Product Information

Application	WB
Primary Accession	O9UIK5
Other Accession	NM_016192
Reactivity	Human
Host	Mouse
Clonality	Monoclonal
Isotype	IgG2a Kappa
Calculated MW	41428

TMEFF2 Antibody (monoclonal) (M08) - Additional Information

Gene ID 23671

Other Names

Tomoregulin-2, TR-2, Hyperplastic polyposis protein 1, Transmembrane protein with EGF-like and two follistatin-like domains, TMEFF2, HPP1, TENB2, TPEF

Target/Specificity

TMEFF2 (NP_057276.2, 201 a.a. ~ 292 a.a) partial recombinant protein with GST tag. MW of the GST tag alone is 26 KDa.

Dilution

WB~~1:500~1000

Format

Clear, colorless solution in phosphate buffered saline, pH 7.2 .

Storage

Store at -20°C or lower. Aliquot to avoid repeated freezing and thawing.

Precautions

TMEFF2 Antibody (monoclonal) (M08) is for research use only and not for use in diagnostic or therapeutic procedures.

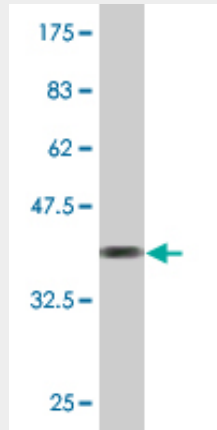
TMEFF2 Antibody (monoclonal) (M08) - Protocols

Provided below are standard protocols that you may find useful for product applications.

- [Western Blot](#)
- [Blocking Peptides](#)
- [Dot Blot](#)

- [Immunohistochemistry](#)
- [Immunofluorescence](#)
- [Immunoprecipitation](#)
- [Flow Cytometry](#)
- [Cell Culture](#)

TMEFF2 Antibody (monoclonal) (M08) - Images



Antibody Reactive Against Recombinant Protein. Western Blot detection against Immunogen (35.86 kDa) .

TMEFF2 Antibody (monoclonal) (M08) - References

Personalized smoking cessation: interactions between nicotine dose, dependence and quit-success genotype score. Rose JE, et al. *Mol Med*, 2010 Jul-Aug. PMID 20379614. Common genetic variation and the control of HIV-1 in humans. Fellay J, et al. *PLoS Genet*, 2009 Dec. PMID 20041166. Methylation of CLDN6, FBN2, RBP1, RBP4, TFPI2, and TMEFF2 in esophageal squamous cell carcinoma. Tsunoda S, et al. *Oncol Rep*, 2009 Apr. PMID 19288010. Coeliac disease-associated risk variants in TNFAIP3 and REL implicate altered NF-kappaB signalling. Trynka G, et al. *Gut*, 2009 Aug. PMID 19240061. Aberrant promoter methylation of the TPEF gene in esophageal squamous cell carcinoma. Zhao BJ, et al. *Dis Esophagus*, 2008. PMID 19040536.