

TES Antibody (monoclonal) (M01)

Mouse monoclonal antibody raised against a full length recombinant TES.

Catalog # AT4207a

Specification

TES Antibody (monoclonal) (M01) - Product Information

Application	IF, WB, IHC
Primary Accession	Q9UGI8
Other Accession	BC001451
Reactivity	Human
Host	mouse
Clonality	Monoclonal
Isotype	IgG1 kappa
Calculated MW	47996

TES Antibody (monoclonal) (M01) - Additional Information**Gene ID** 26136**Other Names**

Testin, TESS, TES

Target/Specificity

TES (AAH01451, 1 a.a. ~ 421 a.a) full-length recombinant protein with GST tag. MW of the GST tag alone is 26 KDa.

Dilution

WB~~1:500~1000

Format

Clear, colorless solution in phosphate buffered saline, pH 7.2 .

Storage

Store at -20°C or lower. Aliquot to avoid repeated freezing and thawing.

Precautions

TES Antibody (monoclonal) (M01) is for research use only and not for use in diagnostic or therapeutic procedures.

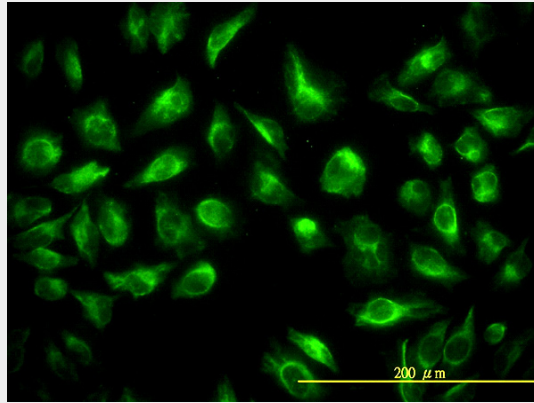
TES Antibody (monoclonal) (M01) - Protocols

Provided below are standard protocols that you may find useful for product applications.

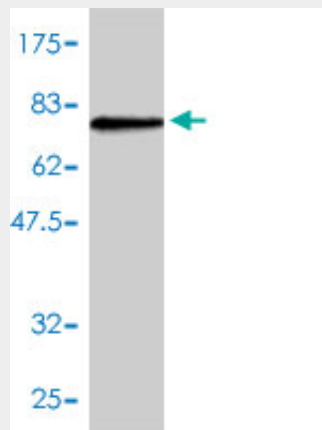
- [Western Blot](#)
- [Blocking Peptides](#)
- [Dot Blot](#)
- [Immunohistochemistry](#)

- [Immunofluorescence](#)
- [Immunoprecipitation](#)
- [Flow Cytometry](#)
- [Cell Culture](#)

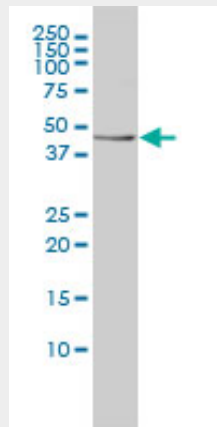
TES Antibody (monoclonal) (M01) - Images



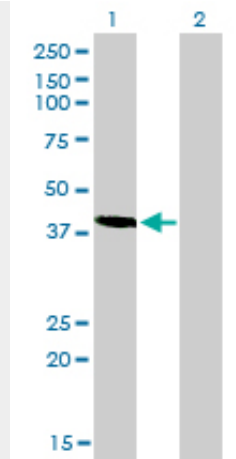
Immunofluorescence of monoclonal antibody to TES on HeLa cell. [antibody concentration 10 ug/ml]



Antibody Reactive Against Recombinant Protein. Western Blot detection against Immunogen (72.05 KDa) .

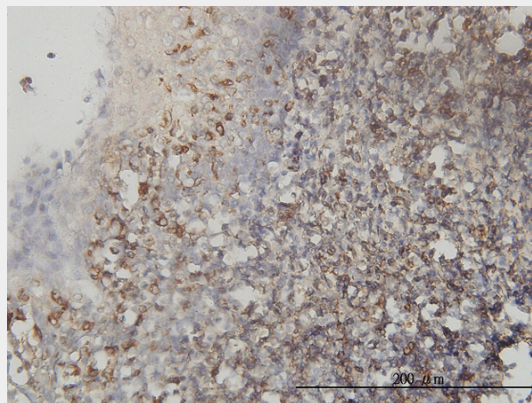


TES monoclonal antibody (M01), clone 1G11-B7 Western Blot analysis of TES expression in K-562 ((Cat # AT4207a)



Western Blot analysis of TES expression in transfected 293T cell line by TES monoclonal antibody (M01), clone 1G11-B7.

Lane 1: TES transfected lysate(48 KDa).
Lane 2: Non-transfected lysate.



Immunoperoxidase of monoclonal antibody to TES on formalin-fixed paraffin-embedded human tonsil tissue. [antibody concentration 3 ug/ml]

TES Antibody (monoclonal) (M01) - Background

Cancer-associated chromosomal changes often involve regions containing fragile sites. This gene maps to a common fragile site on chromosome 7q31.2 designated FRA7G. This gene is similar to mouse Testin, a testosterone-responsive gene encoding a Sertoli cell secretory protein containing three LIM domains. LIM domains are double zinc-finger motifs that mediate protein-protein interactions between transcription factors, cytoskeletal proteins and signaling proteins. Multiple protein isoforms are encoded by transcript variants of this gene.

TES Antibody (monoclonal) (M01) - References

Frequent hypermethylation and loss of heterozygosity of the testis derived transcript gene in ovarian cancer. Qiu H, et al. *Cancer Sci*, 2010 May. PMID 20180808. Downregulation of TESTIN and its association with cancer history and a tendency toward poor survival in head and neck squamous cell carcinoma. Gunduz E, et al. *Arch Otolaryngol Head Neck Surg*, 2009 Mar. PMID 19289703. [Expression and clinical significance of TESTIN in primary gastric cancer] Huang W, et al. *Ai Zheng*, 2008 Sep. PMID 18799041. LIM domain protein TES changes its conformational states in different cellular compartments. Zhong Y, et al. *Mol Cell Biochem*, 2009 Jan. PMID 18696217. Tes, a specific Mena interacting partner, breaks the rules for EVH1 binding. Bo?da B, et al. *Mol Cell*, 2007

Dec 28. PMID 18158903.