

**TCEAL1 Antibody (monoclonal) (M20)**

Mouse monoclonal antibody raised against a partial recombinant TCEAL1.

Catalog # AT4178a

**Specification**

---

**TCEAL1 Antibody (monoclonal) (M20) - Product Information**

Application	WB, E
Primary Accession	<a href="#">O15170</a>
Other Accession	<a href="#">NM_001006639</a>
Reactivity	Human
Host	mouse
Clonality	Monoclonal
Isotype	IgG2a Kappa
Calculated MW	18641

**TCEAL1 Antibody (monoclonal) (M20) - Additional Information**

Gene ID 9338

**Other Names**

Transcription elongation factor A protein-like 1, TCEA-like protein 1, Nuclear phosphoprotein p21/SIIR, Transcription elongation factor S-II protein-like 1, TCEAL1, SIIR

**Target/Specificity**

TCEAL1 (NP\_001006640.1, 1 a.a. ~ 100 a.a) partial recombinant protein with GST tag. MW of the GST tag alone is 26 KDa.

**Dilution**

WB~~1:500~1000

**Format**

Clear, colorless solution in phosphate buffered saline, pH 7.2 .

**Storage**

Store at -20°C or lower. Aliquot to avoid repeated freezing and thawing.

**Precautions**

TCEAL1 Antibody (monoclonal) (M20) is for research use only and not for use in diagnostic or therapeutic procedures.

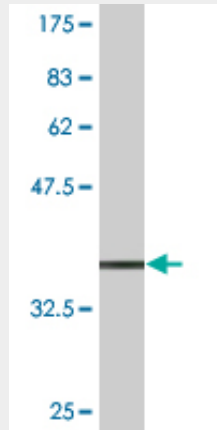
**TCEAL1 Antibody (monoclonal) (M20) - Protocols**

Provided below are standard protocols that you may find useful for product applications.

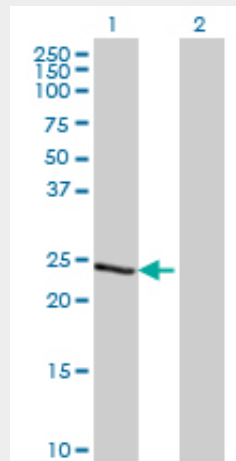
- [Western Blot](#)
- [Blocking Peptides](#)
- [Dot Blot](#)

- [Immunohistochemistry](#)
- [Immunofluorescence](#)
- [Immunoprecipitation](#)
- [Flow Cytometry](#)
- [Cell Culture](#)

### TCEAL1 Antibody (monoclonal) (M20) - Images



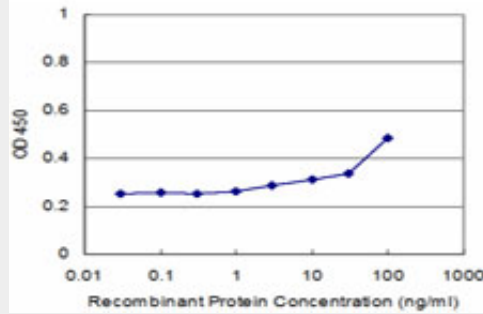
Antibody Reactive Against Recombinant Protein. Western Blot detection against Immunogen (36.74 kDa) .



Western Blot analysis of TCEAL1 expression in transfected 293T cell line by TCEAL1 monoclonal antibody (M20), clone 2B5.

Lane 1: TCEAL1 transfected lysate(18.6 kDa).

Lane 2: Non-transfected lysate.



Detection limit for recombinant GST tagged TCEAL1 is approximately 3ng/ml as a capture antibody.

### **TCEAL1 Antibody (monoclonal) (M20) - Background**

This gene encodes a member of the transcription elongation factor A (SII)-like (TCEAL) gene family. Members of this family may function as nuclear phosphoproteins that modulate transcription in a promoter context-dependent manner. The encoded protein is similar to transcription elongation factor A/transcription factor SII and contains a zinc finger-like motif as well as a sequence related to the transcription factor SII Pol II-binding region. It may exert its effects via protein-protein interactions with other transcriptional regulators rather than via direct binding of DNA. Multiple family members are located on the X chromosome. Alternative splicing results in multiple transcript variants encoding a single isoform.

### **TCEAL1 Antibody (monoclonal) (M20) - References**

Defining the human deubiquitinating enzyme interaction landscape. Sowa ME, et al. Cell, 2009 Jul 23. PMID 19615732. Polymorphisms in cell cycle regulatory genes, urinary arsenic profile and urothelial carcinoma. Chung CJ, et al. Toxicol Appl Pharmacol, 2008 Oct 15. PMID 18640142. Large-scale mapping of human protein-protein interactions by mass spectrometry. Ewing RM, et al. Mol Syst Biol, 2007. PMID 17353931. Polymorphisms of p53 and p21 genes in chronic obstructive pulmonary disease. Lee YL, et al. J Lab Clin Med, 2006 May. PMID 16697770. Linking TP53 codon 72 and P21 nt590 genotypes to the development of cervical and ovarian cancer. Santos AM, et al. Eur J Cancer, 2006 May. PMID 16542834.