

TBX21 Antibody (monoclonal) (M07)

Mouse monoclonal antibody raised against a partial recombinant TBX21.

Catalog # AT4167a

Specification

TBX21 Antibody (monoclonal) (M07) - Product Information

Application	WB, E
Primary Accession	O9UL17
Other Accession	BC039739
Reactivity	Human, Mouse
Host	mouse
Clonality	Monoclonal
Isotype	IgG2a Kappa
Calculated MW	58328

TBX21 Antibody (monoclonal) (M07) - Additional Information

Gene ID 30009

Other Names

T-box transcription factor TBX21, T-box protein 21, T-cell-specific T-box transcription factor T-bet, Transcription factor TBLYM, TBX21, TBET, TBLYM

Target/Specificity

TBX21 (AAH39739.1, 387 a.a. ~ 486 a.a) partial recombinant protein with GST tag. MW of the GST tag alone is 26 KDa.

Dilution

WB~~1:500~1000

Format

Clear, colorless solution in phosphate buffered saline, pH 7.2 .

Storage

Store at -20°C or lower. Aliquot to avoid repeated freezing and thawing.

Precautions

TBX21 Antibody (monoclonal) (M07) is for research use only and not for use in diagnostic or therapeutic procedures.

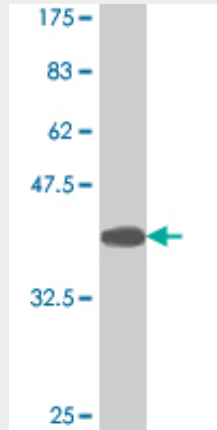
TBX21 Antibody (monoclonal) (M07) - Protocols

Provided below are standard protocols that you may find useful for product applications.

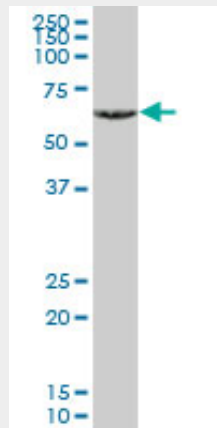
- [Western Blot](#)
- [Blocking Peptides](#)
- [Dot Blot](#)

- [Immunohistochemistry](#)
- [Immunofluorescence](#)
- [Immunoprecipitation](#)
- [Flow Cytometry](#)
- [Cell Culture](#)

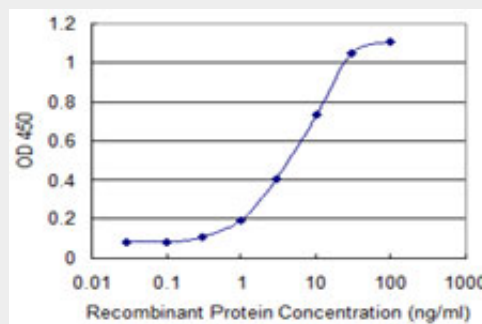
TBX21 Antibody (monoclonal) (M07) - Images



Antibody Reactive Against Recombinant Protein. Western Blot detection against Immunogen (36.63 KDa) .



TBX21 monoclonal antibody (M07), clone 3D7. Western Blot analysis of TBX21 expression in NIH/3T3 ((Cat # AT4167a)



Detection limit for recombinant GST tagged TBX21 is 0.1 ng/ml as a capture antibody.

TBX21 Antibody (monoclonal) (M07) - Background

This gene is a member of a phylogenetically conserved family of genes that share a common DNA-binding domain, the T-box. T-box genes encode transcription factors involved in the regulation of developmental processes. This gene is the human ortholog of mouse Tbx21/Tbet gene. Studies in mouse show that Tbx21 protein is a Th1 cell-specific transcription factor that controls the expression of the hallmark Th1 cytokine, interferon-gamma (IFNG). Expression of the human ortholog also correlates with IFNG expression in Th1 and natural killer cells, suggesting a role for this gene in initiating Th1 lineage development from naive Th precursor cells.

TBX21 Antibody (monoclonal) (M07) - References

Maternal genes and facial clefts in offspring: a comprehensive search for genetic associations in two population-based cleft studies from Scandinavia. Jugessur A, et al. PLoS One, 2010 Jul 9. PMID 20634891. Interleukin-9 polymorphism in infants with respiratory syncytial virus infection: an opposite effect in boys and girls. Schuurhof A, et al. Pediatr Pulmonol, 2010 Jun. PMID 20503287. Association of TBX21 gene haplotypes in a Chinese population with systemic lupus erythematosus. You Y, et al. Scand J Rheumatol, 2010 May. PMID 20429676. Lck mediates Th2 differentiation through effects on T-bet and GATA-3. Kemp KL, et al. J Immunol, 2010 Apr 15. PMID 20237292. The mutations of Th1 cell-specific T-box transcription factor may be associated with a predominant Th2 phenotype in gastric cancers. Yang P, et al. Int J Immunogenet, 2010 Apr. PMID 20193034.