

**SYT4 Antibody (monoclonal) (M04)**

Mouse monoclonal antibody raised against a partial recombinant SYT4.

Catalog # AT4129a

**Specification**

---

**SYT4 Antibody (monoclonal) (M04) - Product Information**

Application	IF, WB, E
Primary Accession	<a href="#">O9H2B2</a>
Other Accession	<a href="#">NM_020783</a>
Reactivity	Human
Host	mouse
Clonality	Monoclonal
Isotype	IgG3 Kappa
Calculated MW	47958

**SYT4 Antibody (monoclonal) (M04) - Additional Information****Gene ID** 6860**Other Names**

Synaptotagmin-4, Synaptotagmin IV, SytIV, SYT4, KIAA1342

**Target/Specificity**

SYT4 (NP\_065834, 1 a.a. ~ 99 a.a) partial recombinant protein with GST tag. MW of the GST tag alone is 26 KDa.

**Dilution**

WB~~1:500~1000

**Format**

Clear, colorless solution in phosphate buffered saline, pH 7.2 .

**Storage**

Store at -20°C or lower. Aliquot to avoid repeated freezing and thawing.

**Precautions**

SYT4 Antibody (monoclonal) (M04) is for research use only and not for use in diagnostic or therapeutic procedures.

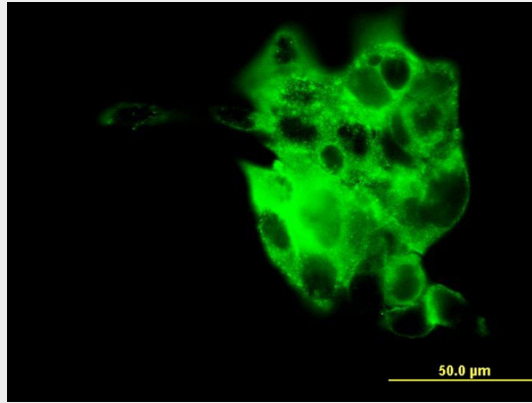
**SYT4 Antibody (monoclonal) (M04) - Protocols**

Provided below are standard protocols that you may find useful for product applications.

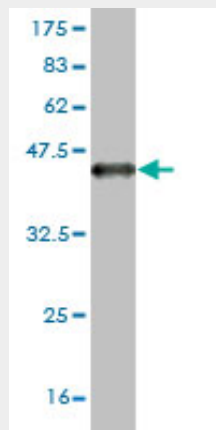
- [Western Blot](#)
- [Blocking Peptides](#)
- [Dot Blot](#)
- [Immunohistochemistry](#)

- [Immunofluorescence](#)
- [Immunoprecipitation](#)
- [Flow Cytometry](#)
- [Cell Culture](#)

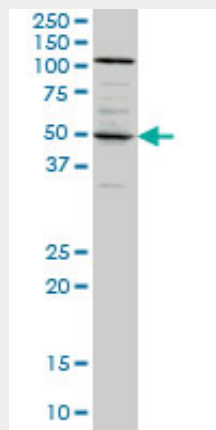
### SYT4 Antibody (monoclonal) (M04) - Images



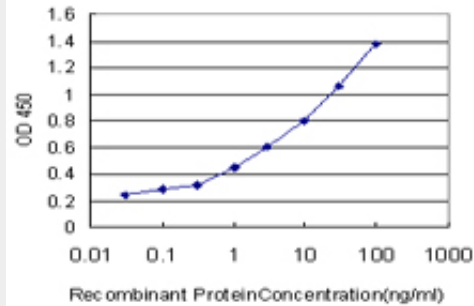
Immunofluorescence of monoclonal antibody to SYT4 on A-431 cell. [antibody concentration 10 ug/ml]



Antibody Reactive Against Recombinant Protein. Western Blot detection against Immunogen (36.63 KDa) .



SYT4 monoclonal antibody (M04), clone 5F8 Western Blot analysis of SYT4 expression in A-431 (Cat # AT4129a )



Detection limit for recombinant GST tagged SYT4 is approximately 0.03ng/ml as a capture antibody.

### **SYT4 Antibody (monoclonal) (M04) - References**

Pharmacogenetics of antipsychotic response in the CATIE trial: a candidate gene analysis. Need AC, et al. *Eur J Hum Genet*, 2009 Jul. PMID 19156168. Does parental expressed emotion moderate genetic effects in ADHD? An exploration using a genome wide association scan. Sonuga-Barke EJ, et al. *Am J Med Genet B Neuropsychiatr Genet*, 2008 Dec 5. PMID 18846501. Towards a proteome-scale map of the human protein-protein interaction network. Rual JF, et al. *Nature*, 2005 Oct 20. PMID 16189514. The status, quality, and expansion of the NIH full-length cDNA project: the Mammalian Gene Collection (MGC). Gerhard DS, et al. *Genome Res*, 2004 Oct. PMID 15489334. Generation and initial analysis of more than 15,000 full-length human and mouse cDNA sequences. Strausberg RL, et al. *Proc Natl Acad Sci U S A*, 2002 Dec 24. PMID 12477932.